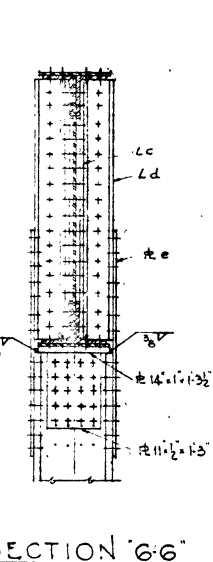
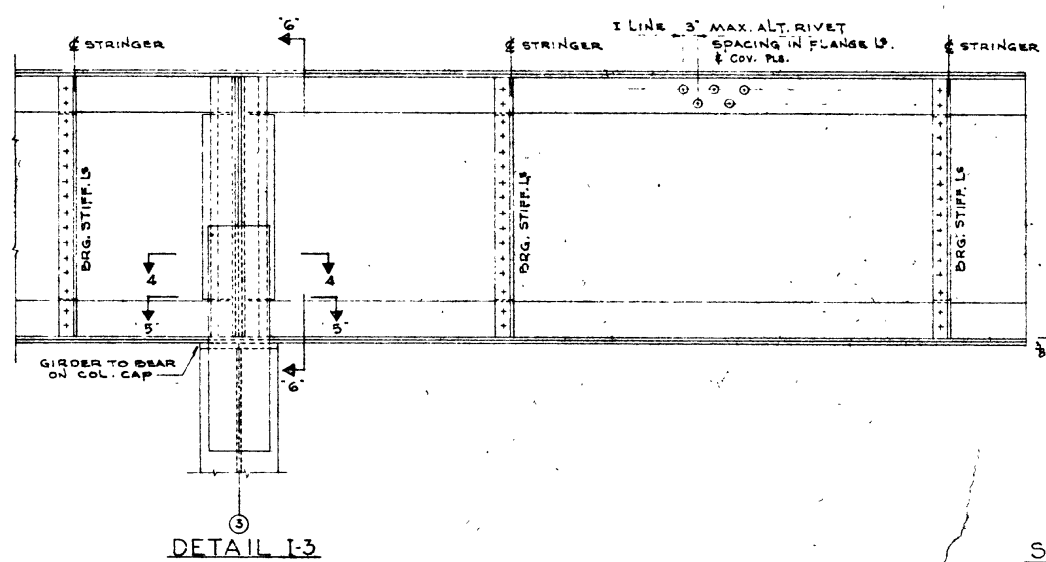
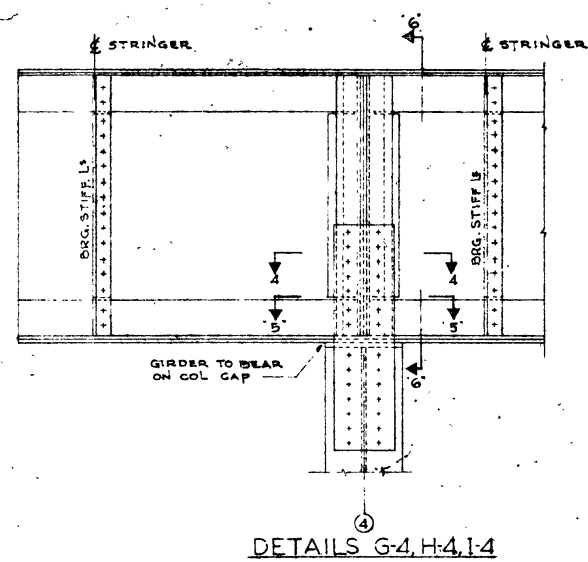
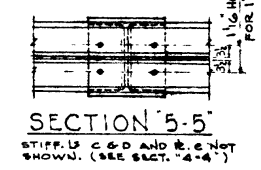
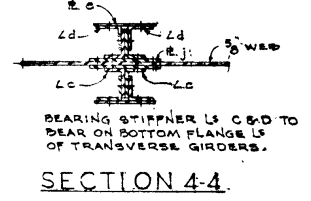
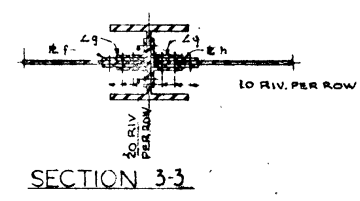
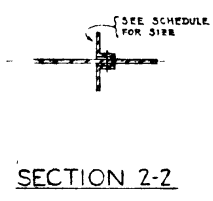
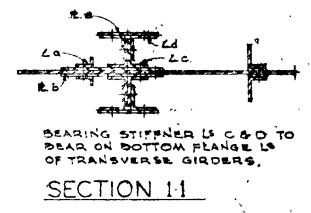
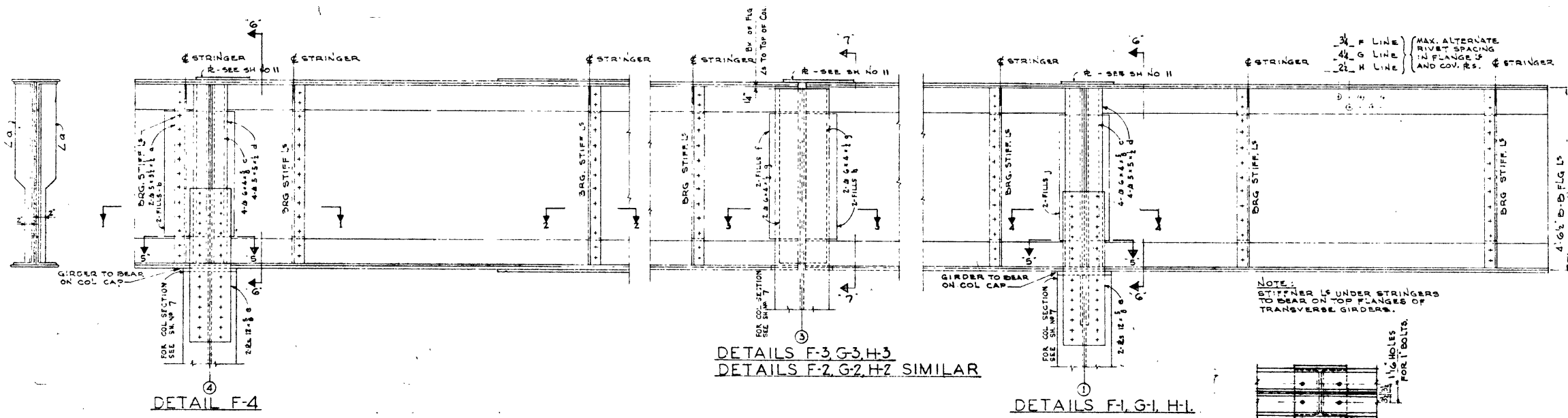


ROUTE	SECTION	COUNTY	TOTAL SHEETS	SHEET NUMBER
VARIOUS	2012-076BP	COOK	34	25

CONTRACT NO. 60V86



LOCATION	COLUMN LINE	WEB	FLANGE ANGLES	FULL LENGTH COVER PLATES TOP & BOT.
NORTH	E	60 x 2	4 1/2 x 6 x 1/2 T	14 x 3/8
CENTER	E	60 x 2	4 1/2 x 6 x 1/2 T	14 x 3/8
SOUTH	E	60 x 2	4 1/2 x 6 x 1/2 T	14 x 3/8
NORTH	F	54 x 3/8	4 1/2 x 6 x 1/2 T	14 x 3/8
CENTER	F		4 1/2 x 6 x 1/2 T	14 x 3/8
SOUTH	F		4 1/2 x 6 x 1/2 T	14 x 3/8
NORTH	G		4 1/2 x 6 x 1/2 T	14 x 3/8
CENTER	G		4 1/2 x 6 x 1/2 T	14 x 3/8
SOUTH	G		4 1/2 x 6 x 1/2 T	14 x 3/8
NORTH	H		4 1/2 x 6 x 1/2 T	14 x 3/8
CENTER	H		4 1/2 x 6 x 1/2 T	14 x 3/8
SOUTH	H		4 1/2 x 6 x 1/2 T	14 x 3/8
NORTH	I		4 1/2 x 6 x 1/2 T	14 x 3/8
SOUTH	I		4 1/2 x 6 x 1/2 T	14 x 3/8
NORTH	J	54 x 3/8	4 1/2 x 6 x 1/2 T	14 x 3/8
CENTER	J	56 x 3/8	4 1/2 x 6 x 1/2 T	14 x 3/8
SOUTH	J	58 x 3/8	4 1/2 x 6 x 1/2 T	14 x 3/8
NORTH	K	48 x 3/8	3 1/2 x 6 x 1/2 T	TOP & BOT. 16 x 3/8
CENTER	K	49 x 3/8	do	do
SOUTH	K	60 x 3/8	do	do

ILLINOIS DEPARTMENT OF TRANSPORTATION

EXISTING BRIDGE PLAN
LOCATION 4
SN 016-0460

I-290 (Congress St.) over Post Office to River