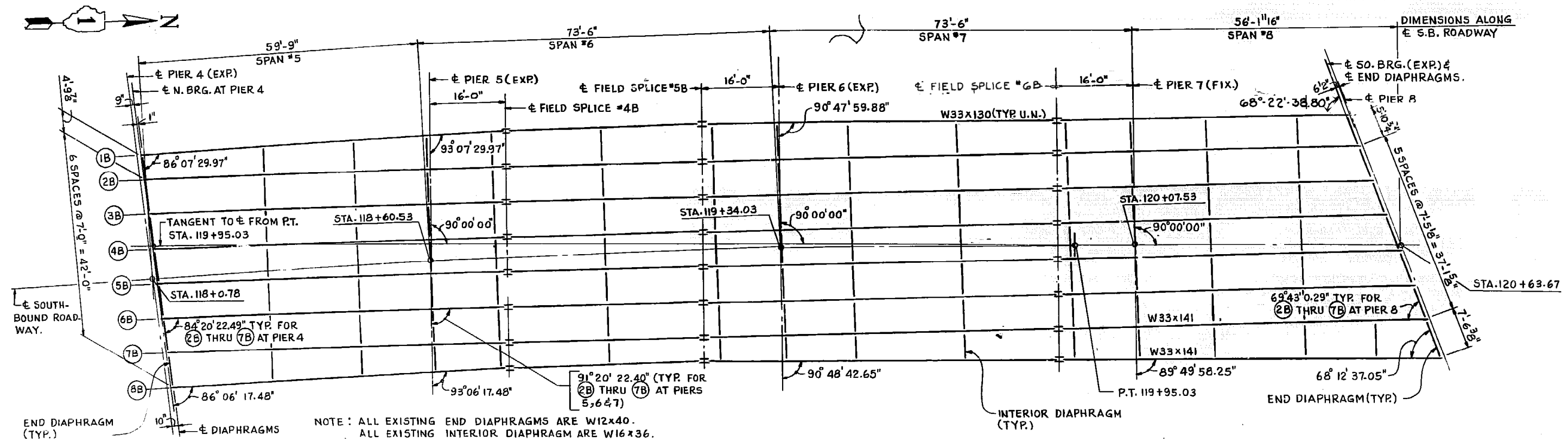


ROUTE	SECTION	COUNTY	TOTAL SHEETS	SHEET NUMBER
FAP 348	2012-079BP	COOK	16	9

CONTRACT NO. 60V89



ALL END DIAPHRAGMS ARE W12X40

UNIT 'B' STEEL BEAM FRAMING PLAN

ILLINOIS DEPARTMENT OF
TRANSPORTATION

EXISTING BRIDGE PLAN

SN 016-0317

S.B. IL 43 (HARLEM AVE.) OVER I.C.G. R.R.