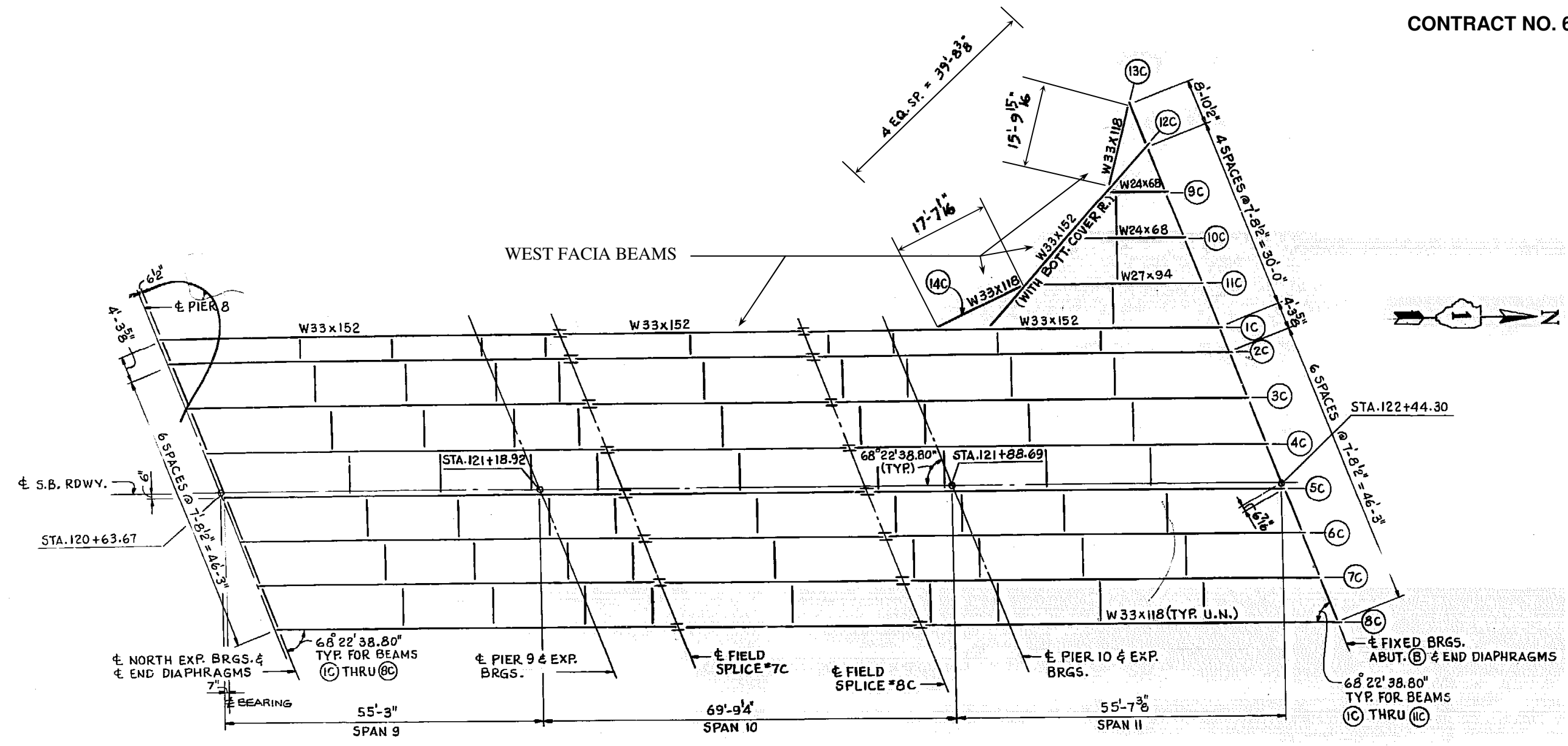


ROUTE	SECTION	COUNTY	TOTAL SHEETS	SHEET NUMBER
FAP 348	2012-079BP	COOK	16	10

CONTRACT NO. 60V89



NOTE: ALL EXISTING END END DIAPHRAGMS ARE W12x40
ALL EXISTING INTERIOR DIAPHRAGMS ARE W16x36

UNIT 'C' STEEL BEAM FRAMING PLAN

ILLINOIS DEPARTMENT OF
TRANSPORTATION

EXISTING BRIDGE PLAN

SN 016-0317
S.B. IL 43 (HARLEM AVE.) OVER I.C.G. R.R.