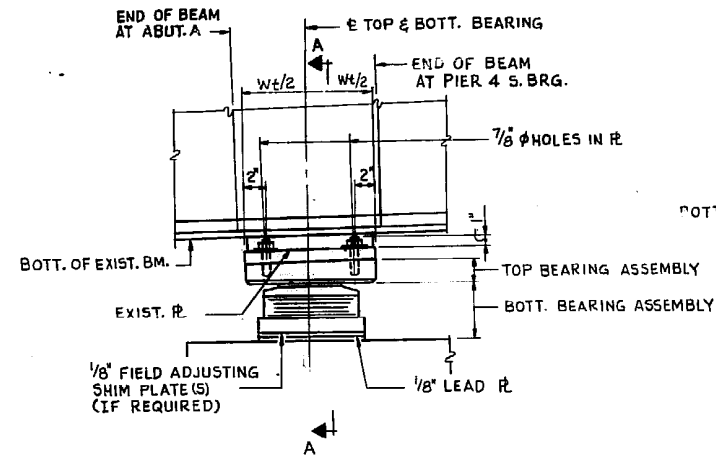
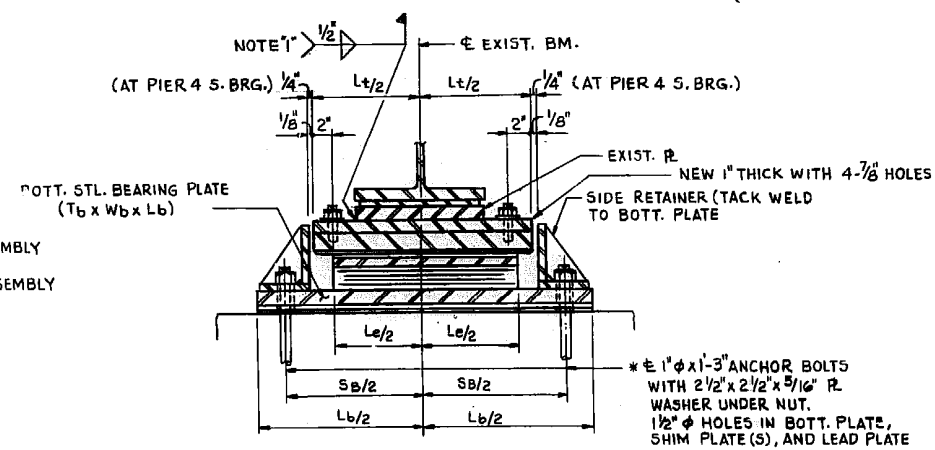


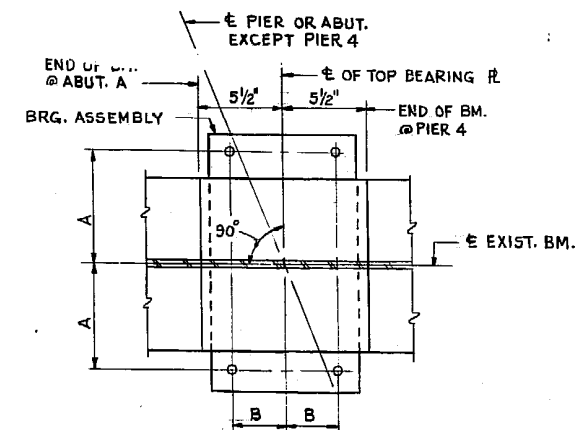
<b>ROUTE</b> FAP 348	<b>SECTION</b> 2012-079BP	<b>COUNTY</b> COOK	<b>TOTAL SHEETS</b> 16	<b>SHEET NUMBER</b> 12
-------------------------	------------------------------	-----------------------	---------------------------	---------------------------



**SIDE VIEW**

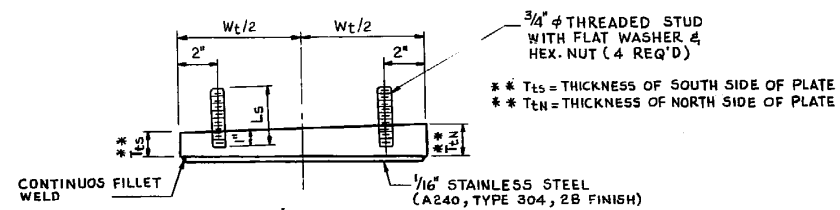


**SECTION A-A**

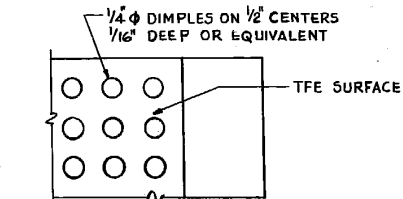


**TYPICAL ORIENTATION OF BEARING ASSEMBLY**

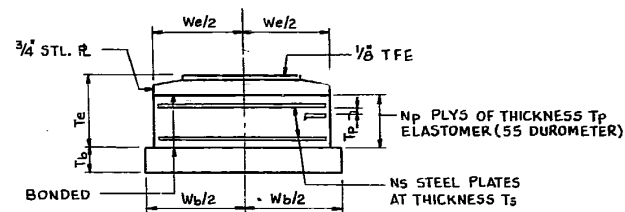
**TYPE II ELASTOMERIC EXP. BRG.**



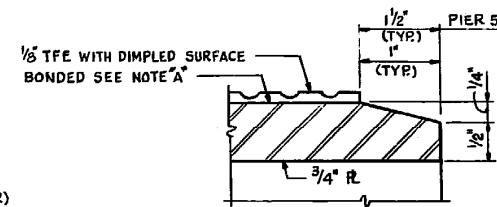
**TOP BEARING ASSEMBLY**



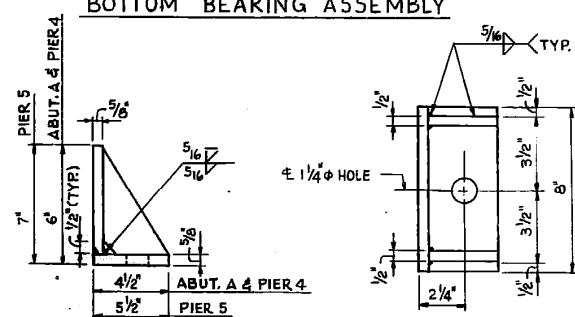
**PLAN-TFE SURFACE**



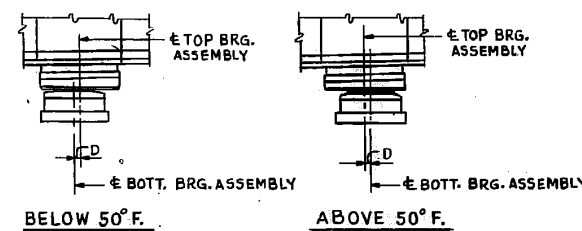
**BOTTOM BEARING ASSEMBLY**



**SECTION THRU TFE**



**SIDE RETAINER**  
(48 REQ'D)



**BELOW 50°F.**

**ABOVE 50°F.**

TABLE OF VARIABLES FOR EXPANSION VARIABLES			
VARIABLES	LOCATION		
	ABUT. A	PIER 4 (S. BRG.)	
	BM IATHRU BA	BM IATHRU BA	
ELASTOMER	Te (")	3 1/8"	3 1/8"
	We (")	7	7
	Le (")	12	12
	Tp (")	3/8	3/8
	NP	5	5
	Ts (")	3/32	3/32
	Ns	4	4
TOP PLATE	TtN (")	2 1/4	2 1/4
	Tts (")	2	2
	Wt (")	9	9
	Lt (")	20	20
	Ls (")	2 7/8	2 7/8
STUD BOTT. PLATE	Tb (")	1 3/8	1 3/8
	Wb (")	8	8
	Lb (")	29 3/4	30
	Sb (")	24 3/4	25
STUD	A (")	8	8
	B (")	2 1/2	2 1/2
NO. REQ'D	8	8	

**ILLINOIS DEPARTMENT OF TRANSPORTATION**

**EXISTING BRIDGE PLAN**

**SN 016-0317**

**S.B. IL 43 (HARLEM AVE.) OVER I.C.G. R.R.**

**SHEET 6 OF 6**