

NOTE:

FOR COORDINATE AND CURVE INFORMATION FOR THE RAIL ALIGNMENTS, PLEASE REFER TO THE RAIL SHEETS.

MATCH LINE STA. 2018+00
SEE SHEET 36

SEE SHEET 304
MATCH LINE
STA. 20302+00



BENCHMARKS

BENCHMARK #1 (TBM 4)
SQUARE CUT IN SE PORTION OF TRAFFIC SIGNAL MAST ARM CONCRETE FOUNDATION, NORTHEAST CORNER OF IRVING PARK ROAD AT YORK ROAD INTERSECTION (ELEVATION = 678.76)

BENCHMARK #2 (TBM 9)
FIRE HYDRANT WEST ARROW BOLT ±300' NORTH OF YORK ROAD AND ROOSEVELT AVENUE INTERSECTION, EAST SIDE OF YORK ROAD (ELEVATION = 668.50)

BENCHMARK #3 (TBM 10)
FOUND BRASS IDOT MONUMENT SOUTH SIDE OF WEST HEADWALL BENSENVILLE DITCH CULVERT ±200' NORTH OF IRVING PARK ROAD AND YORK ROAD INTERSECTION (ELEVATION = 662.75)

NOTE: ALL BENCHMARK ELEVATIONS ARE BASED ON NAVD 88 VERTICAL DATUM

PROP. IL ROUTE 19

PROP. CURVE PRIL19-01
PI STA. = 395+80.78
Δ = 6° 12' 25" (RT)
D = 0° 59' 59.95"
R = 5,729.65'
T = 310.65'
L = 620.69'
E = 8.42'
e = N.C.
T.R. = N/A
S.E. RUN = N/A
P.C. STA. = 392+70.13
P.T. STA. = 398+90.82

EXIST. IL ROUTE 19

PROP. CURVE PRIL19-02
PI STA. = 411+69.03
Δ = 82° 13' 01" (RT)
D = 8° 11' 06.40"
R = 700.00'
T = 610.83'
L = 1,004.47'
E = 229.04'
e = 3.9%
T.R. = 62.56'
S.E. RUN = 121.78'
P.C. STA. = 405+58.20
P.T. STA. = 415+62.67

EXIST. CURVE EIRPK-1
PI STA. = 396+95.92
Δ = 8° 30' 00" (RT)
D = 0° 59' 59.95"
R = 5,729.65'
T = 425.79'
L = 850.02'
E = 15.80'
e = N.C.
P.C. STA. = 392+70.13
P.T. STA. = 401+20.15

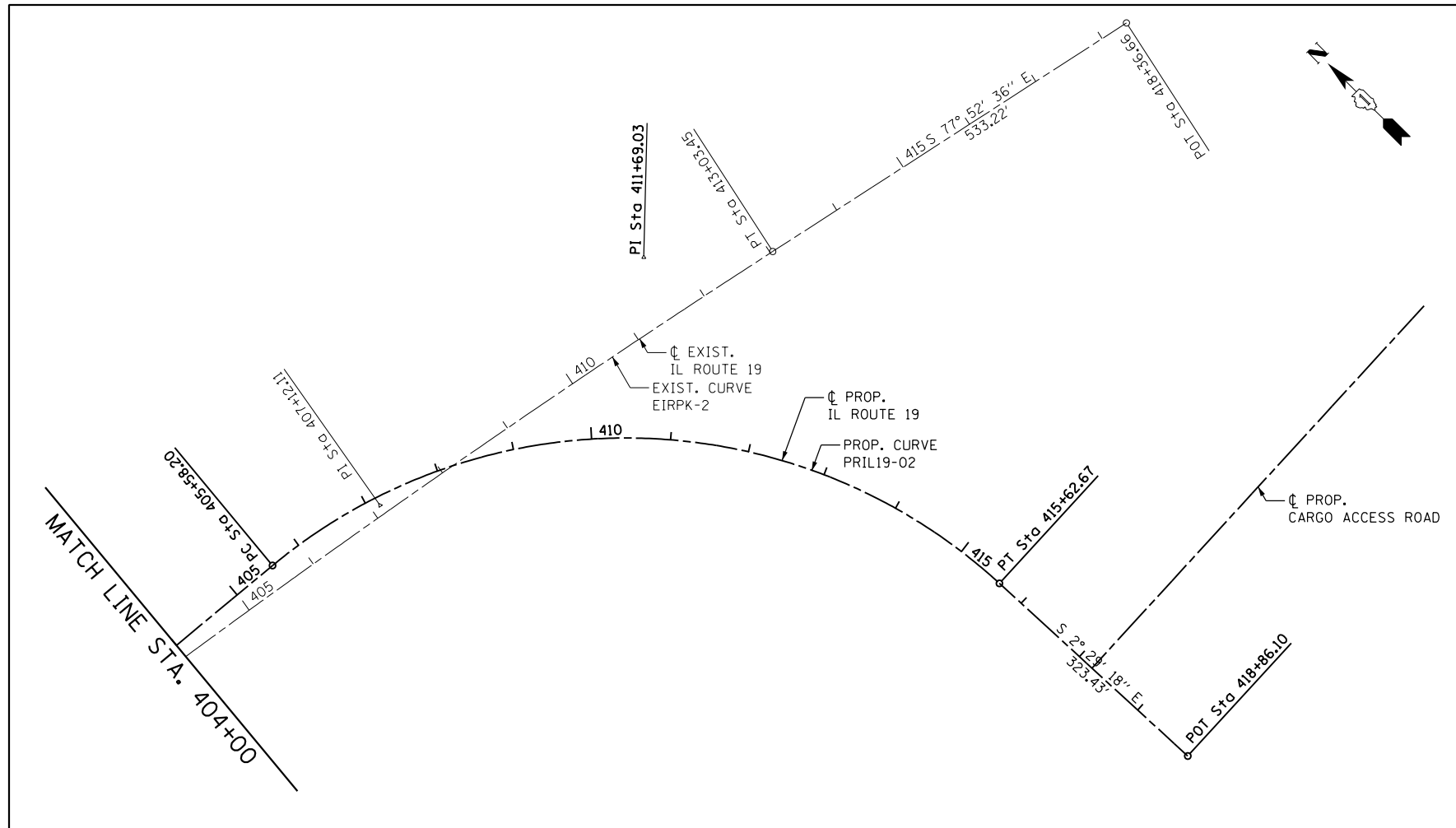
EXIST. CURVE EIRPK-2
PI STA. = 407+12.11
Δ = 4° 32' 08" (RT)
D = 0° 22' 59.88"
R = 14,948.00'
T = 591.96'
L = 1,183.29'
E = 11.72'
e = N.C.
P.C. STA. = 401+20.15
P.T. STA. = 413+03.45

PROP. IL ROUTE 19 COORDINATES

CURVE NAME	POINT	NORTHING	EASTING	BEARING	DISTANCE (FEET)
	POT STA. 377+51.75	1,928,591.2648	1,089,369.7560		
	POT STA. 390+77.84	1,928,598.4649	1,090,695.8298	N 89°41'20.06" E	1,326.09
				N 89°05'15.87" E	192.29
	PC STA. 392+70.13	1,928,601.5264	1,090,888.0918		
PRIL19-01	PI STA. 395+80.78	1,928,606.4723	1,091,198.7032		
	PT STA. 398+90.82	1,928,577.8064	1,091,508.0285		
				S 84°42'19.43" E	667.37
	PC STA. 405+58.20	1,928,516.2233	1,092,172.5549		
PRIL19-02	PI STA. 411+69.03	1,928,459.8578	1,092,780.7801		
	PT STA. 415+62.67	1,927,849.6024	1,092,807.3010		
				S 2°29'18.38" E	323.43
	POT STA. 418+86.10	1,927,526.4779	1,092,821.3436		

EXIST. IL ROUTE 19 COORDINATES

CURVE NAME	POINT	NORTHING	EASTING	BEARING	DISTANCE (FEET)
	POT STA. 377+51.75	1,928,591.2648	1,089,369.7560		
	POT STA. 390+77.84	1,928,598.4649	1,090,695.8298	N 89°41'20.06" E	1,326.09
				N 89°05'15.87" E	192.29
	PC STA. 392+70.13	1,928,601.5264	1,090,888.0918		
PRIL19-01	PI STA. 396+95.92	1,928,608.3055	1,091,313.8299		
	PCC STA. 401+20.15	1,928,552.0812	1,091,735.8936		
				S 82°24'43.73" E	0.00
	PCC STA. 401+20.15	1,928,552.0812	1,091,735.8936		
PRIL19-02	PI STA. 407+12.11	1,928,473.9156	1,092,322.6668		
	PT STA. 413+03.45	1,928,349.5938	1,092,901.4212		
				S 77°52'35.65" E	533.22
	POT STA. 418+36.66	1,928,237.6081	1,093,422.7476		



USER NAME = user	DESIGNED - MPK	REVISED -
PLOT SCALE = *SCALE*	DRAWN - ML	REVISED -
PLOT DATE = 11/2/2012	CHECKED - LGP	REVISED -
	DATE - 11-02-2012	REVISED -

STATE OF ILLINOIS
DEPARTMENT OF TRANSPORTATION

ALIGNMENT TIES AND BENCHMARKS
IL 19 IRVING PARK ROAD

SCALE: 1" = 100' SHEET NO. 1 OF 4 SHEETS STA. TO STA.

F.A.U. RTE.	SECTION	COUNTY	TOTAL SHEETS	SHEET NO.
1321	32VB	DUPAGE	388	35
CONTRACT NO. 60W01				
ILLINOIS FED. AID PROJECT				