

MATCH LINE
STA. 13+00 SEE SHEET 37

PROP. YORK ROAD COORDINATES

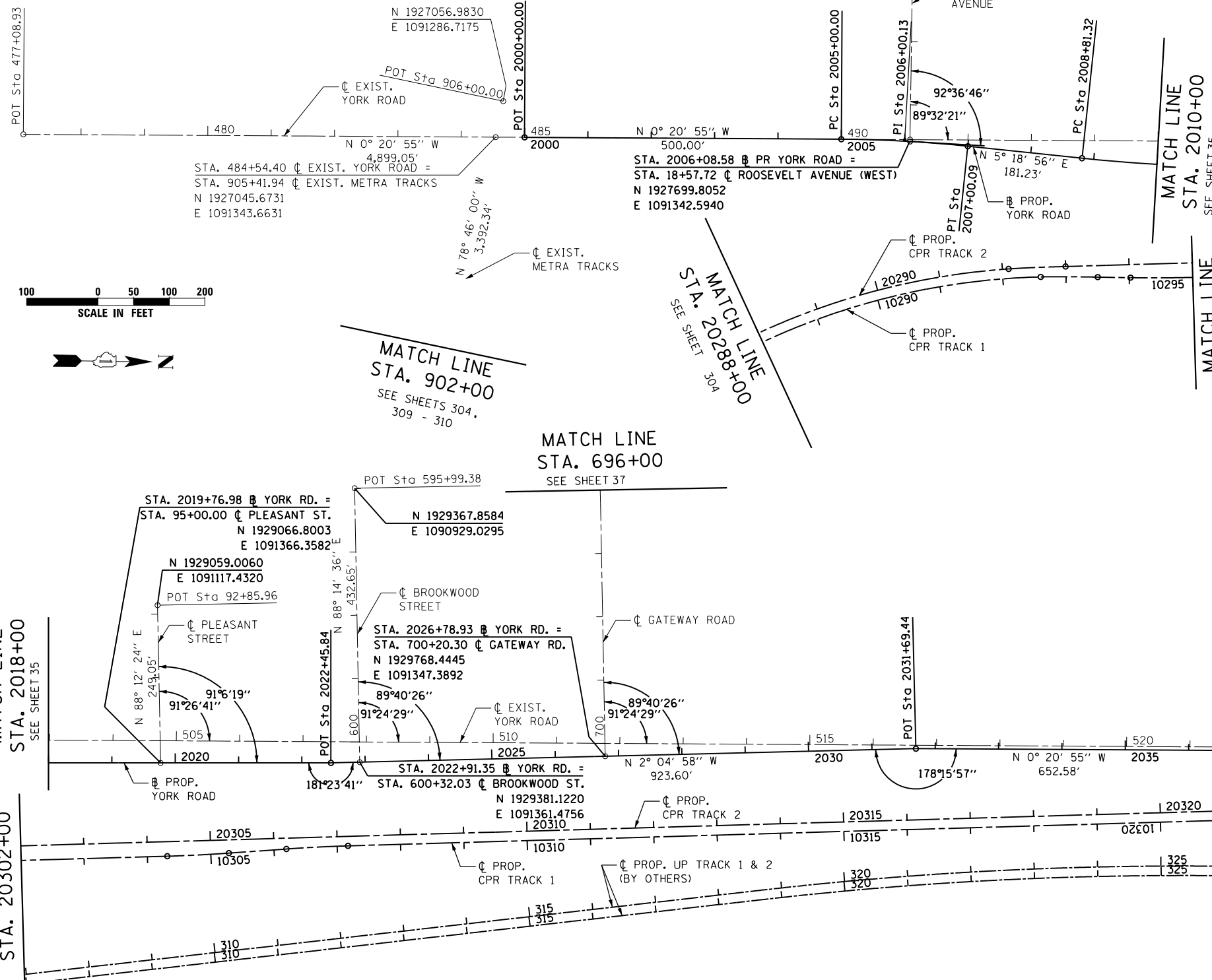
CURVE NAME	POINT		NORTHING	EASTING	BEARING	DISTANCE (FEET)
	POT STA.	2000+00.00	1,927,091.3856	1,091,343.3856		
					N 0°20'55.19" W	500.00
	PC STA.	2005+00.00	1,927,591.2660	1,091,340.3429		
PR_YRK-01	PI STA.	2006+00.13	1,927,691.3911	1,091,339.7336		
	PT STA.	2007+00.09	1,927,791.0875	1,091,349.0095		
					N 5°18'55.96" E	181.23
	PC STA.	2008+81.32	1,927,971.5379	1,091,365.7987		
PR_YRK-02	PI STA.	2010+12.42	1,928,102.0720	1,091,377.9437		
	PT STA.	2011+43.28	1,928,233.1604	1,091,376.3695		
					N 0°41'16.94" W	1,102.56
	POT STA.	2022+45.84	1,929,335.6433	1,091,363.1296		
	POT STA.	2031+69.44	1,930,258.6380	1,091,329.5616		
					N 2°04'58.26" W	923.60
	POT STA.	2038+22.03	1,930,911.2077	1,091,325.5904		

EXIST. YORK ROAD COORDINATES

CURVE NAME	POINT		NORTHING	EASTING	BEARING	DISTANCE (FEET)
	POT STA.	477+08.93	1,926,300.2199	1,091,348.1995		
					N 0°20'55.19" W	4,899.05
	POT STA.	526+07.98	1,931,199.1763	1,091,318.3872		
					N 0°40'42.94" W	2,218.42
	POT STA.	548+26.39	1,933,417.4383	1,091,292.1136		

ALIGNMENT = PROP. YORK ROAD

PROP. CURVE PRIL19-01 PI STA. = 395+80.78 Δ = 6° 12' 25" (RT) D = 1° 00' 00" R = 5,729.65' T = 310.65' L = 620.69' E = 8.42' e = N.C. T.R. = N/A S.E. RUN = N/A P.C. STA. = 392+70.13 P.T. STA. = 398+90.82	PROP. CURVE PRIL19-02 PI STA. = 411+69.03 Δ = 82° 13' 01" (RT) D = 8° 11' 06" R = 700.00' T = 610.83' L = 1,004.47' E = 229.04' e = 3.9% T.R. = 62.07' S.E. RUN = 121.03' P.C. STA. = 405+58.20 P.T. STA. = 415+62.67
---	---



NOTE:
FOR COORDINATE AND CURVE INFORMATION FOR THE CPR/UPRR AND METRA RAIL ALIGNMENTS, PLEASE REFER TO THE RAIL SHEETS.



USER NAME = user	DESIGNED - MPK	REVISED -
PLOT SCALE = *SCALE*	DRAWN - ML	REVISED -
PLOT DATE = 11/22/2012	CHECKED - LGP	REVISED -
	DATE - 11-02-2012	REVISED -

STATE OF ILLINOIS
DEPARTMENT OF TRANSPORTATION

**ALIGNMENT TIES AND BENCHMARKS
YORK ROAD**

SCALE: 1"= 100' SHEET NO. 2 OF 4 SHEETS STA. TO STA.

F.A.U. RTE.	SECTION	COUNTY	TOTAL SHEETS	SHEET NO.
1321	32VB	DUPAGE	388	36
CONTRACT NO. 60W01				
ILLINOIS FED. AID PROJECT				