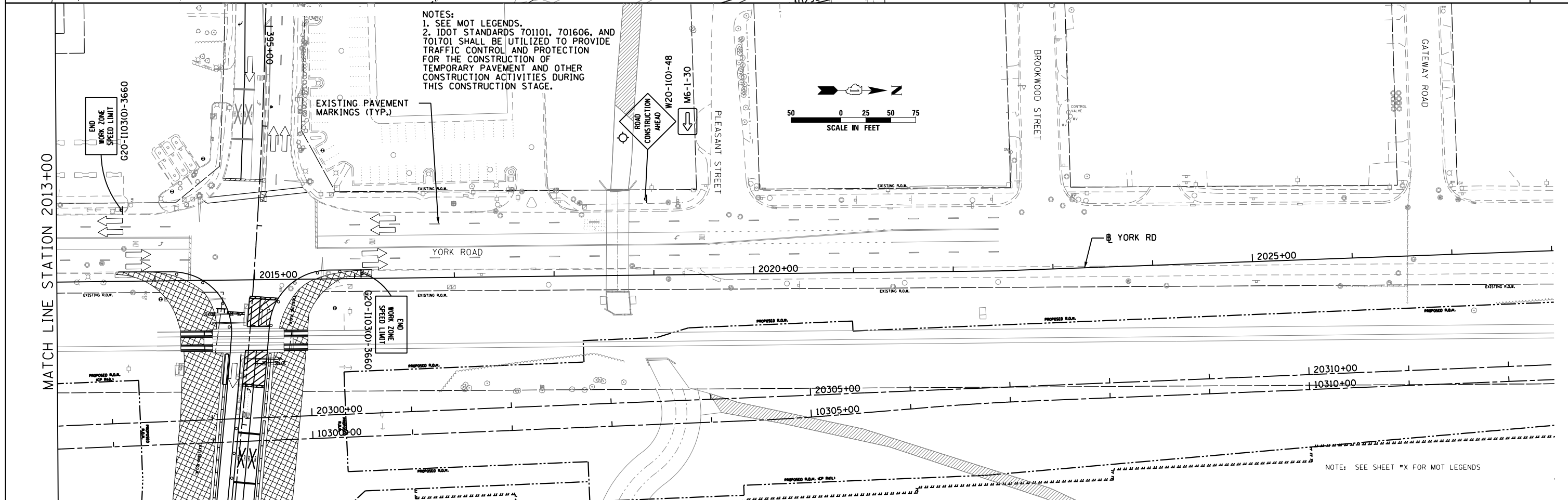


NOTES:
 1. SEE MOT LEGENDS.
 2. IDOT STANDARDS 701101, 701606, AND 701701 SHALL BE UTILIZED TO PROVIDE TRAFFIC CONTROL AND PROTECTION FOR THE CONSTRUCTION OF TEMPORARY PAVEMENT AND OTHER CONSTRUCTION ACTIVITIES DURING THIS CONSTRUCTION STAGE.



NOTES:
 1. SEE MOT LEGENDS.
 2. IDOT STANDARDS 701101, 701606, AND 701701 SHALL BE UTILIZED TO PROVIDE TRAFFIC CONTROL AND PROTECTION FOR THE CONSTRUCTION OF TEMPORARY PAVEMENT AND OTHER CONSTRUCTION ACTIVITIES DURING THIS CONSTRUCTION STAGE.

MATCH LINE STATION 2013+00

MATCH LINE STATION 2013+00



USER NAME = user	DESIGNED - JJS	REVISED -
PLOT SCALE = *SCALE*	DRAWN - TT	REVISED -
PLOT DATE = 11/22/2012	CHECKED - LGP	REVISED -
	DATE - 08-03-2012	REVISED -

**STATE OF ILLINOIS
 DEPARTMENT OF TRANSPORTATION**

**MAINTENANCE OF TRAFFIC STAGE 1
 YORK RD.**

SCALE: 1" = 50' SHEET NO. 8 OF 29 SHEETS STA. 2000+00 TO STA. 2028+00

F.A.U. RTE.	SECTION	COUNTY	TOTAL SHEETS	SHEET NO.
1321	32 WRS-5	DUPAGE	388	57
CONTRACT NO. 60B42				
ILLINOIS FED. AID PROJECT				

NOTE: SEE SHEET *X* FOR MOT LEGENDS