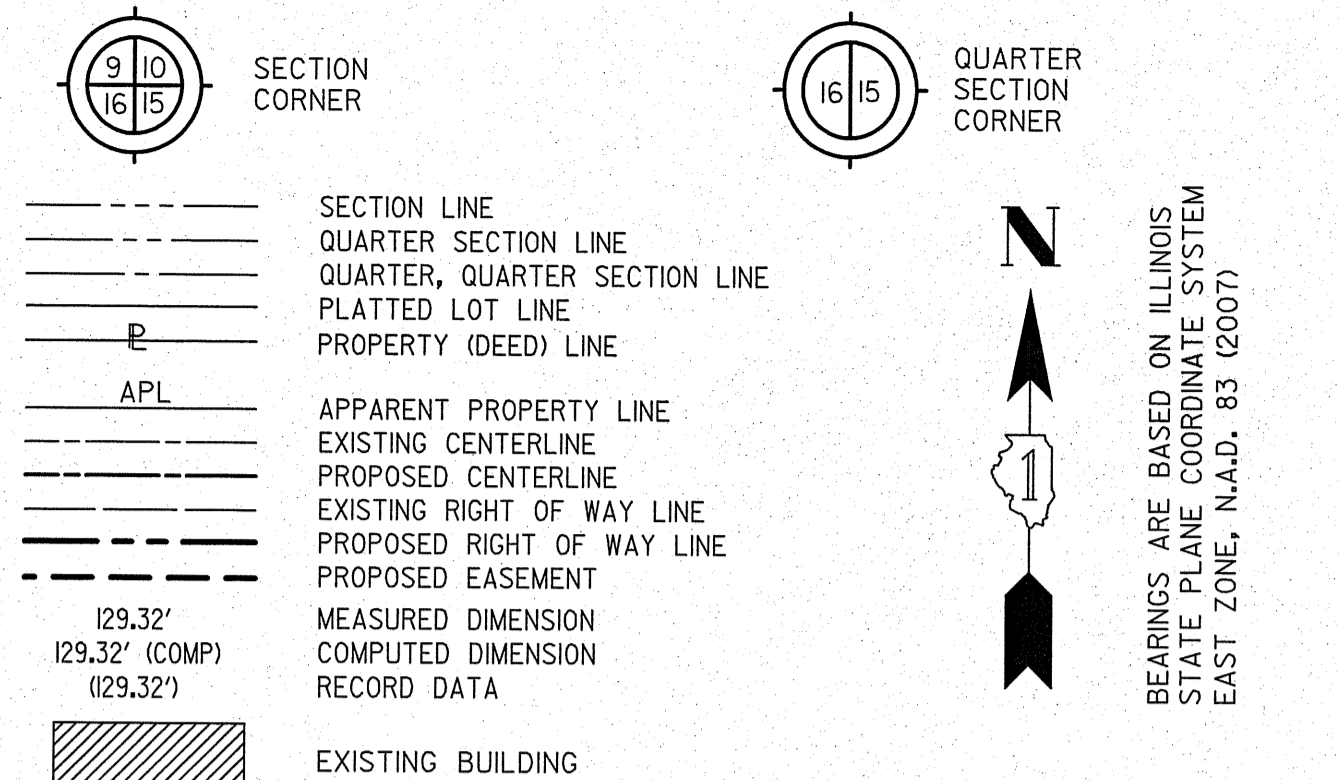


PART OF SECTIONS 12 & 13, T40N, R11E OF THE 3rd PM, ADDISON TWP, DUPAGE COUNTY, ILLINOIS & PART OF THE W. 1/2 SECTION 18, T40N, R12E OF THE 3rd PM, LEYDEN TWP., COOK COUNTY, ILLINOIS.

LEGEND



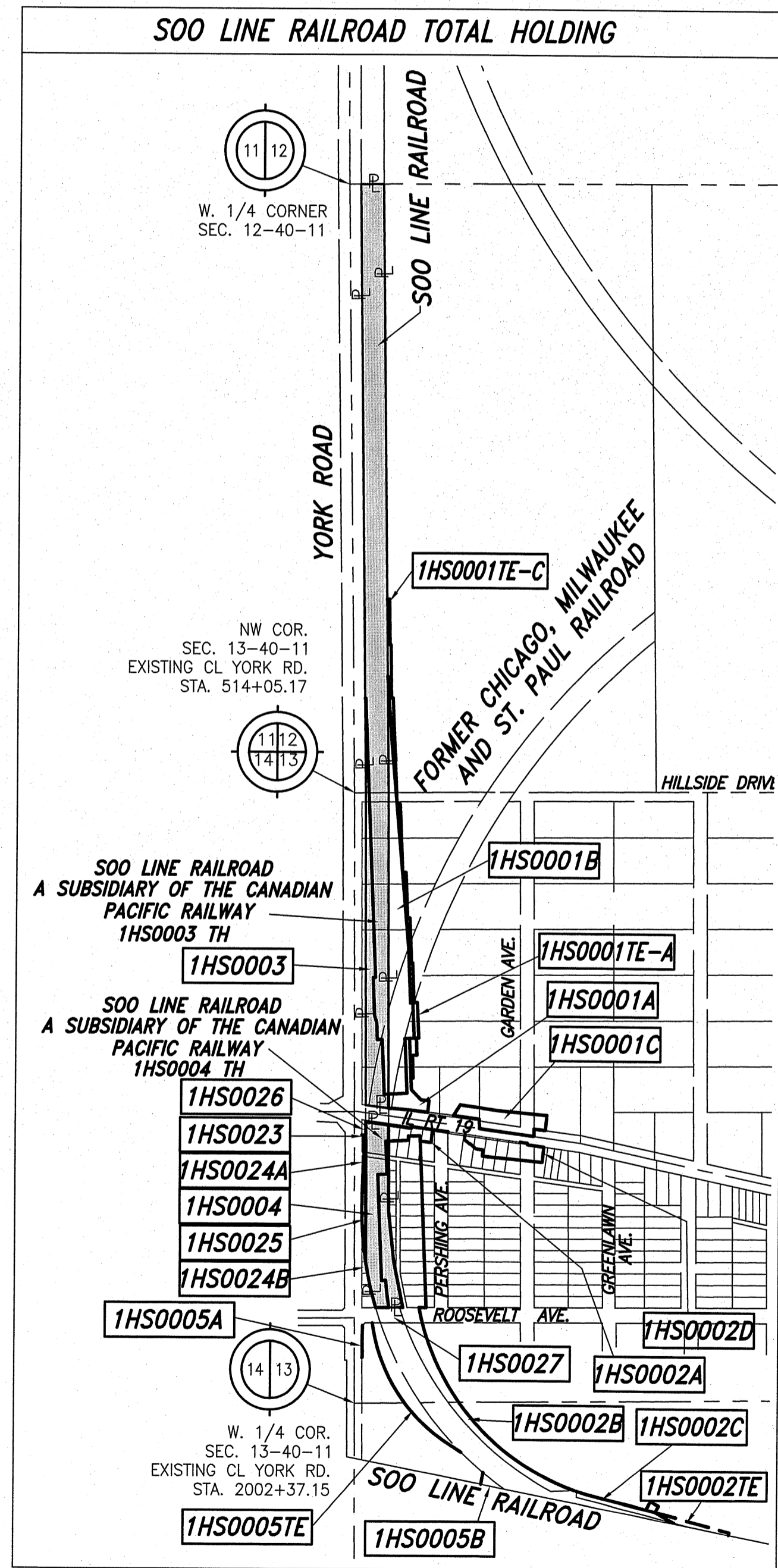
BEARINGS ARE BASED ON ILLINOIS STATE PLANE COORDINATE SYSTEM EAST ZONE, N.A.D. 83 (2007)

PARCEL NUMBER	OWNER	TOTAL HOLDING ACRES	PART TAKEN ACRES	REMAINDER ACRES	PREV. DED. ACRES	EASEMENT ACRES	EASEMENT PURPOSE	PERMANENT TAX INDEX NUMBER	PROPERTY ACQUIRED BY
1HS0001A	CITY OF CHICAGO, A MUNICIPAL CORPORATION	362.926±	0.369	359.404±	0.184	0.358	CONSTRUCTION	SEE PIN TABLE	
1HS0001B			2.450						
1HS0001C			0.703						
1HS0001TE-A									
1HS0001TE-C									
1HS0002A	CITY OF CHICAGO, A MUNICIPAL CORPORATION	230.15±	0.264	225.74±		0.165	CONSTRUCTION	SEE PIN TABLE	
1HS0002B			3.576						
1HS0002C			0.216						
1HS0002D			0.559						
1HS0002TE									
1HS0003	SOO LINE RAILROAD A SUBSIDIARY OF THE CANADIAN PACIFIC RAILWAY	N/A	1.409	N/A				03-12-509-002	
1HS0004	SOO LINE RAILROAD A SUBSIDIARY OF THE CANADIAN PACIFIC RAILWAY	N/A	1.299	N/A				03-13-509-001	
1HS0005A	CITY OF CHICAGO, A MUNICIPAL CORPORATION	3.971	0.005 ACRES	3.906		0.710	CONSTRUCTION	SEE PIN TABLE	
1HS0005B			239 SQ. FT.						
1HS0005TE			0.060						
1HS0025	CITY OF CHICAGO, A MUNICIPAL CORPORATION	0.146	0.146	0.000				03-13-509-001	
1HS0027	CITY OF CHICAGO, A MUNICIPAL CORPORATION	0.160	0.160	0.000					

PIN TABLE		
PARCEL 1HS0001	PARCEL 1HS0002	PARCEL 1HS0005
03-12-300-005	03-13-104-004	03-13-110-002
03-13-100-001	03-13-104-005	03-13-110-003
03-13-100-002	03-13-104-006	03-13-110-005
03-13-100-010	03-13-104-007	03-13-110-006
03-13-100-017	03-13-104-008	03-13-110-008
03-13-100-021	03-13-104-009	03-13-110-009
03-13-100-022	03-13-104-010	03-13-110-010
03-13-100-023	03-13-104-011	03-13-300-001
03-13-100-024	03-13-104-012	03-13-300-002
03-13-100-025	03-13-104-014	03-13-300-003
03-13-100-026	03-13-104-015	03-13-300-004
03-13-100-030	03-13-104-016	03-13-301-001
03-13-100-031	03-13-104-017	
03-13-100-032	03-13-105-005	
03-13-100-040	03-13-105-006	
03-13-100-043	03-13-105-007	
03-13-100-045	03-13-105-008	
03-13-100-048	03-13-105-009	
03-13-101-056	03-13-105-010	
	03-13-108-001	
	03-13-302-013	
	03-13-306-004	
	03-13-306-005	
	03-13-111-001	
	03-13-112-001	

** = DENOTES AREA DERIVED FROM RECORDED INFORMATION, TAX MAPS AND AERIAL PHOTOGRAPHY. (NOT SURVEYED)

P.I.N. NUMBERS LISTED ARE ONLY THOSE EFFECTED BY THE TAKE AND TEMPORARY EASEMENT AREAS. (NOT THE TOTAL HOLDING)



- IRON PIPE OR ROD FOUND ○ SET 5/8" x 30" REBAR
- + CUT CROSS FOUND OR SET ● PK FOUND PK NAIL ○ PK SET PK NAIL
- T1 THESE STAKES REFERENCE FOUND OR SET MONUMENTATION
- T2 SET 5/8 INCH REBAR FLUSH WITH GROUND TO THE FOUND IRON STAKE. IDENTIFIED BY COLORED PLASTIC CAP AND BEARING SURVEYORS PROFESSIONAL NUMBER.
- BT1 THESE STAKES, IN CULTIVATED AREAS, REFERENCE FOUND OR SET MONUMENTATION.
- BT2 BURIED 5/8 INCH REBAR 20 INCHES BELOW GROUND TO THE FOUND IRON STAKE.
- BT3 IDENTIFIED BY COLORED PLASTIC CAP BEARING SURVEYORS PROFESSIONAL NUMBER.
- STAKING OF PROPOSED RIGHT OF WAY.
- SET DIVISION OF HIGHWAYS SURVEY MARKER TO MONUMENT THE POSITION SHOWN. IDENTIFIED BY INSCRIPTION DATA AND SURVEYORS PROFESSIONAL NUMBER.
- M STAKING OF PROPOSED RIGHT OF WAY IN CULTIVATED AREAS.
- BURIED 5/8 INCH REBAR 20 INCHES BELOW GROUND TO MARK FUTURE SURVEY MARKER POSITION. IDENTIFIED BY COLORED PLASTIC CAP BEARING SURVEYORS PROFESSIONAL NUMBER.
- PERMANENT SURVEY MARKER, IDOT STD. 2135 (TO BE SET BY OTHERS)
- RIGHT OF WAY STAKING PROPOSED TO BE SET.

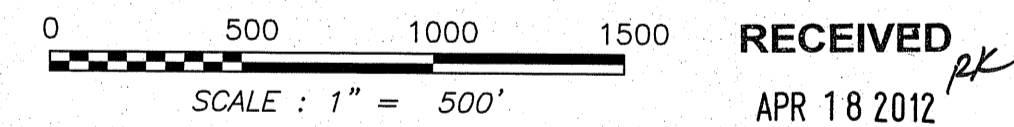
STATE OF ILLINOIS)
 COUNTY OF WILL)

THIS IS TO CERTIFY THAT WE, CLAASSEN, WHITE & ASSOCIATES, P.C., AN ILLINOIS PROFESSIONAL DESIGN FIRM LAND SURVEYING CORPORATION NUMBER 035-002962, HAVE SURVEYED THE PLAT OF HIGHWAYS SHOWN HEREON IN PART OF SECTIONS 12 & 13, TOWNSHIP 40 NORTH, RANGE II EAST OF THE THIRD PRINCIPAL MERIDIAN, DUPAGE COUNTY, & PART OF THE W. 1/2 SECTION 18, TOWNSHIP 40 NORTH, RANGE II EAST OF THE THIRD PRINCIPAL MERIDIAN, COOK COUNTY, THAT THE SURVEY IS TRUE AND COMPLETE AS SHOWN TO THE BEST OF MY KNOWLEDGE AND BELIEF, THAT THE PLAT CORRECTLY REPRESENTS SAID SURVEY, THAT ALL MONUMENTS FOUND AND ESTABLISHED ARE OF PERMANENT QUALITY AND OCCUPY THE POSITIONS SHOWN THEREON AND THAT THE MONUMENTS ARE SUFFICIENT TO ENABLE THE SURVEY TO BE RETRACED. THIS SURVEY CONFORMS TO THE CURRENT ILLINOIS MINIMUM STANDARDS FOR A BOUNDARY SURVEY. MADE FOR THE DEPARTMENT OF TRANSPORTATION, STATE OF ILLINOIS.

DATED AT JOLIET, ILLINOIS THIS _____ DAY OF _____, 2012 A.D.

 VICE PRESIDENT

DAVID A. CLAASSEN
 ILLINOIS PROFESSIONAL LAND SURVEYOR NO. 035-002962
 LICENSE EXPIRES NOVEMBER 30, 2012
 THIS PROFESSIONAL SERVICE CONFORMS TO THE CURRENT ILLINOIS MINIMUM STANDARDS FOR A BOUNDARY SURVEY.



NOTES:
 1) BEARINGS AND COORDINATES SHOWN HEREON ARE BASED ON ILLINOIS STATE PLANE COORDINATE SYSTEM EAST ZONE, NAD 83, (2007).

RECEIVED
 APR 18 2012
 PLATS & LEGALS

Classten, White & Associates, P.C.
 121 AIRPORT DRIVE, UNIT 1
 JOLIET, ILLINOIS 60431
 (815) 744-3720

**PLAT OF HIGHWAYS
 STATE OF ILLINOIS
 DEPARTMENT OF TRANSPORTATION
 ILLINOIS ROUTE 19**

SECTION @ YORK ROAD DUPAGE COUNTY
 PROJECT JOB NO. R-91-014-07
 STATION TO STATION
 SCALE: 1" = 500' SHEET 9 OF _____

**BUREAU OF LAND ACQUISITION
 201 WEST CENTER COURT
 SCHAUMBURG, ILLINOIS 60196-1096**

PRINTING DATE: APRIL 13, 2012 - JLS \Microstation\Sheet 9 REV 04-13-12.dgn

JOB #5660