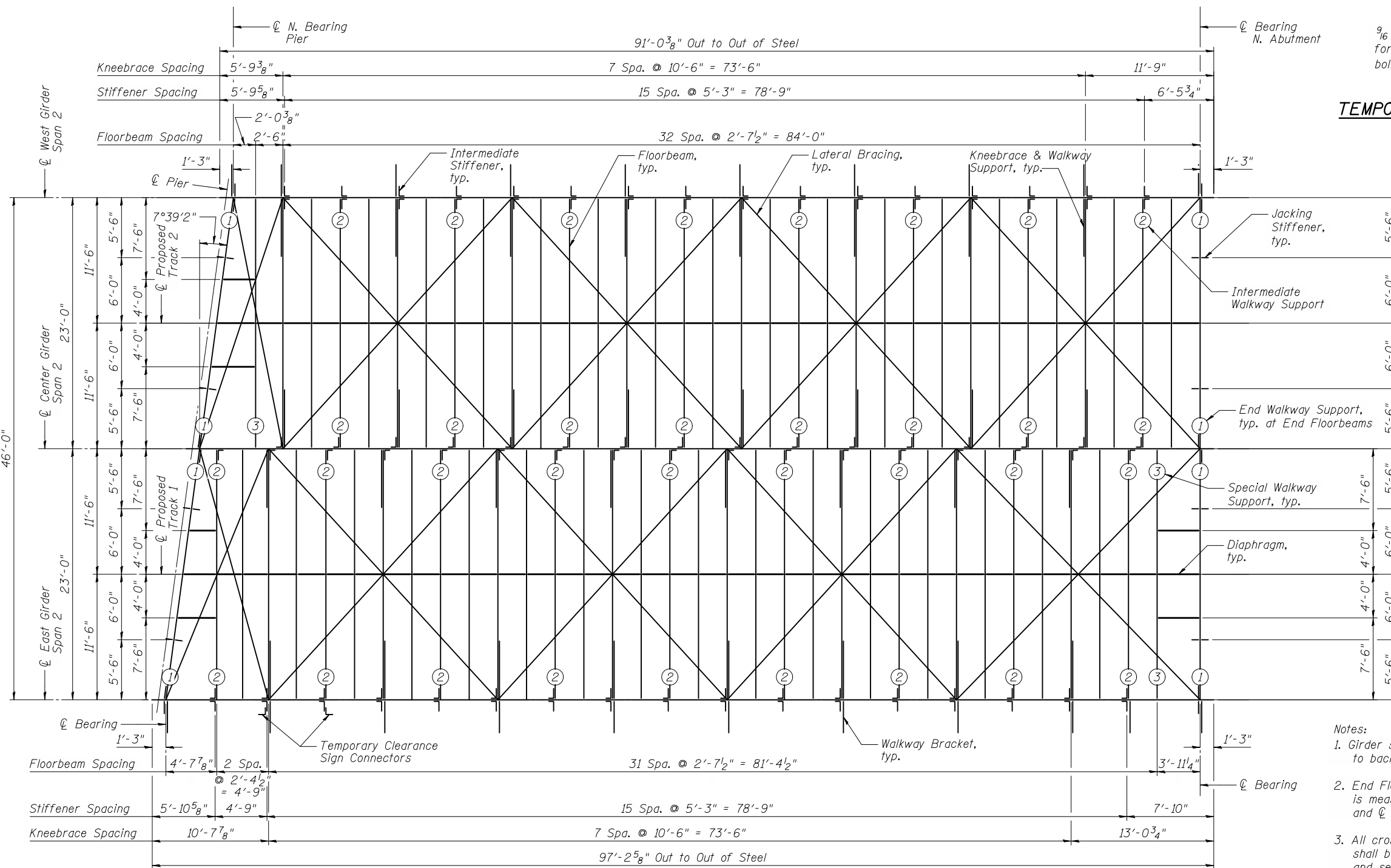
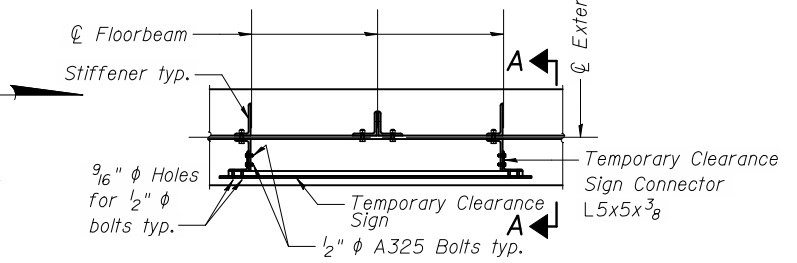


ca:\pwworking\oma\0220226-60B42-008-FRP.DGN
jmlgus

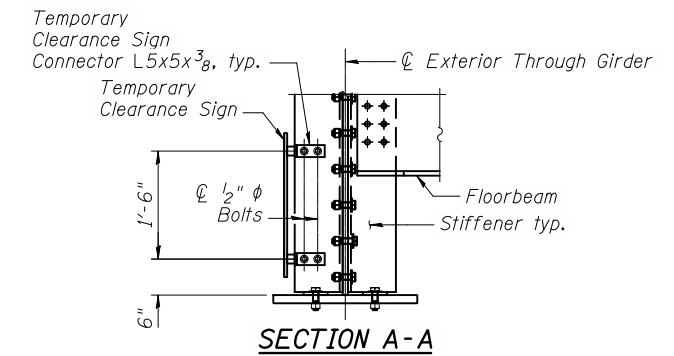
11/2/2012
11:22:27 AM



FRAMING PLAN - SPAN 2



TEMPORARY CLEARANCE SIGN CONNECTOR DETAIL



Walkway Support Location Key

- ① - End Walkway Support
- ② - Intermediate Walkway Support
- ③ - Special Walkway Support

Notes:

1. Girder stiffener spacing is measured to back face of stiffener angles.
2. End Floorbeam Stiffener spacing is measured at ϕ stiffener plates and ϕ floorbeam.
3. All cross frames and diaphragms shall be installed as steel is erected and secured with erection pins and bolts except as otherwise noted. Individual cross frames or diaphragms at supports may be temporarily disconnected to install bearing anchor rods.



USER NAME = jmlgus
FILE NAME = 0220226-60B42-008-FRP.DGN
PLOT SCALE = NONE
PLOT DATE = 11/2/2012

DESIGNED - AMM
CHECKED - LAG
DRAWN - RMA
CHECKED - AMM

REVISED -
REVISED -
REVISED -
REVISED -

**STATE OF ILLINOIS
DEPARTMENT OF TRANSPORTATION**

**FRAMING PLAN - SPAN 2
STRUCTURE NO. 022-0226**

SHEET NO. 8 OF 43 SHEETS

F.A.U. RTE.	SECTION	COUNTY	TOTAL SHEETS	SHEET NO.
1321	32VB	DU PAGE	388	149
CONTRACT NO. 60W01				
ILLINOIS FED. AID PROJECT				