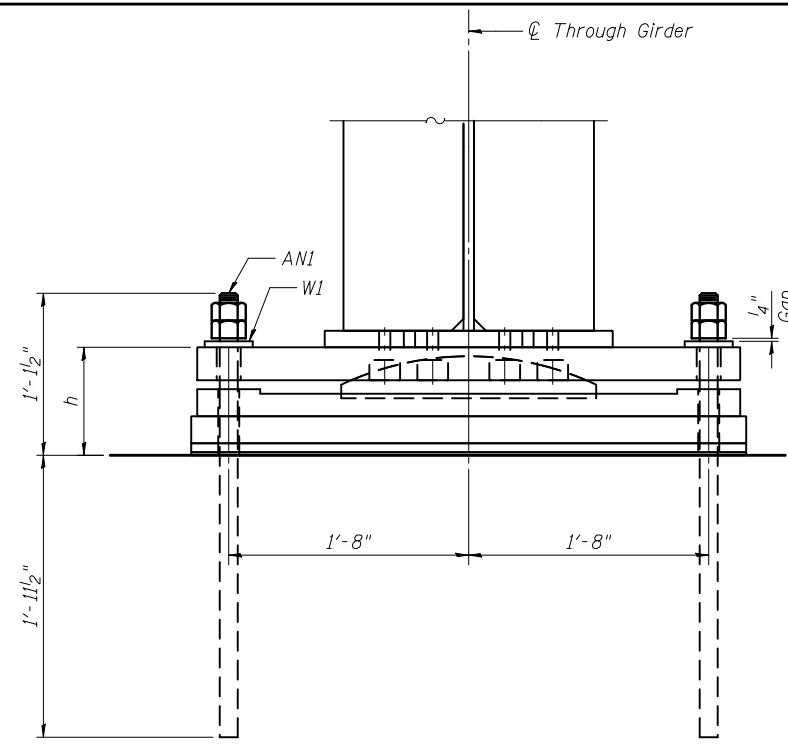
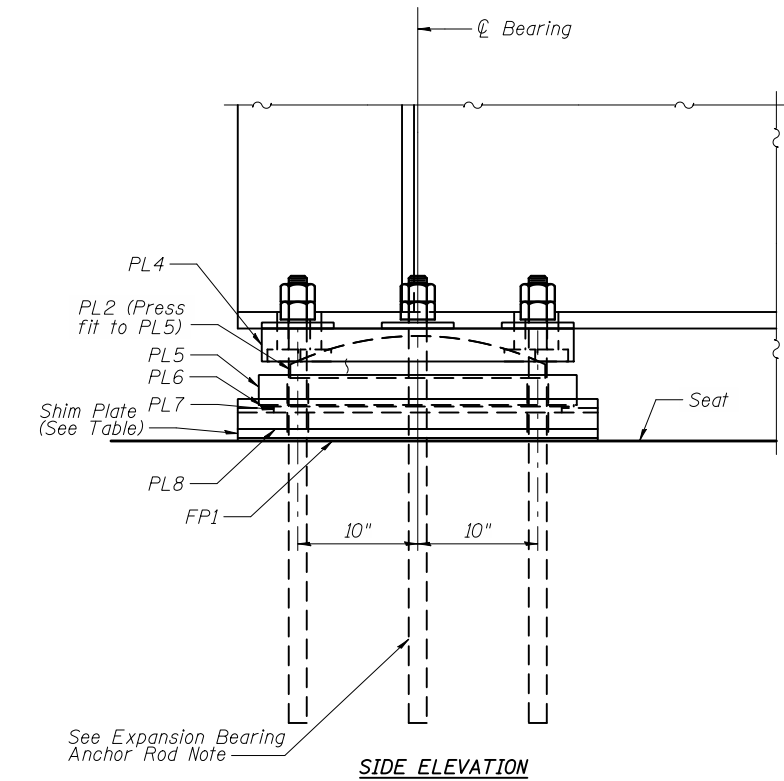


SIDE ELEVATION

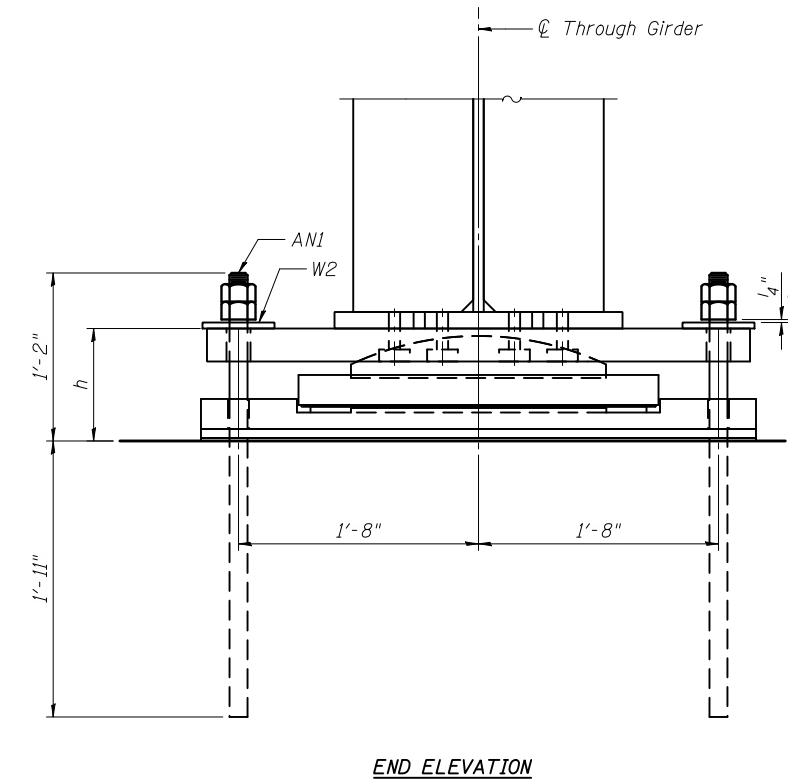


END ELEVATION

FIXED BEARING



SIDE ELEVATION

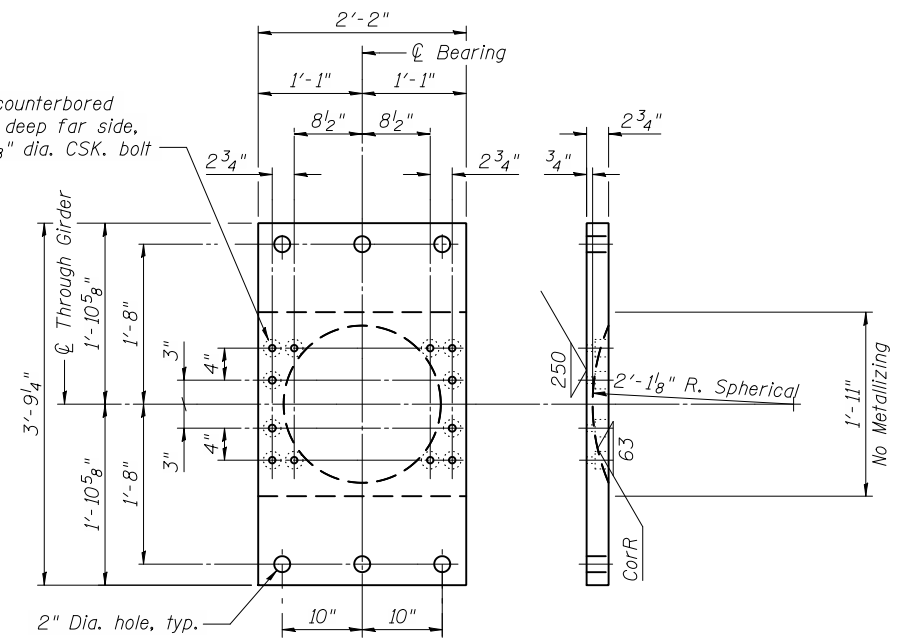


END ELEVATION

EXPANSION BEARING

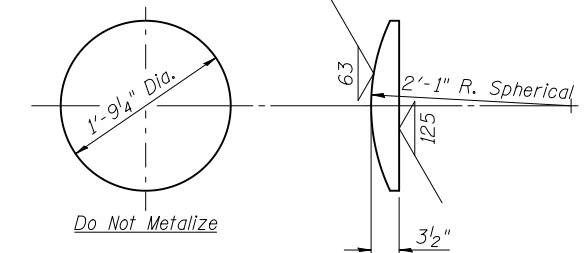
Expansion Bearing Anchor Rod Note:
Four anchor rods shall be installed at each Expansion Bearing. See Pier Plan for location of rods.

15/16" Dia. holes counterbored
2 3/16" dia. x 1/16" deep far side,
12 places for 7/8" dia. CSK. bolt



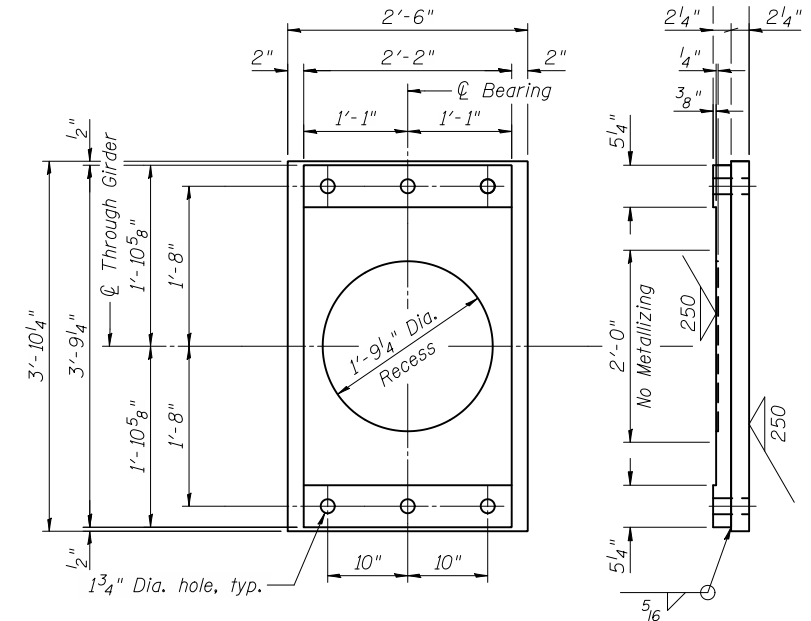
SHOE PLATE PL1

2'-2" x 2 3/4" x 3'-9 1/4"
3 Required per span



DISC PLATE PL2

1'-9 1/4" Dia. x 3/2"
6 Required per span
Press fit to PL3 and PL5



BED PLATE PL3

2'-2" x 2 1/4" x 3'-9 1/4" &
2'-6" x 2 1/4" x 3'-10 1/4"
3 Required per span

*See next sheet for Bearing Notes.

ca:\pwworking\oma\0463409\0220226-60842-022-BRG.DGN
jmlgus

11/2/2012
11:24:31 AM



USER NAME = jmlgus
FILE NAME = 0220226-60842-022-BRG.DGN
PLOT SCALE = NONE
PLOT DATE = 11/2/2012

DESIGNED - AMM
CHECKED - LAG
DRAWN - RMA
CHECKED - AMM

REVISED -
REVISED -
REVISED -
REVISED -

**STATE OF ILLINOIS
DEPARTMENT OF TRANSPORTATION**

**BEARING DETAILS 1
STRUCTURE NO. 022-0226**

SHEET NO. 22 OF 43 SHEETS

F.A.U. RTE.	SECTION	COUNTY	TOTAL SHEETS	SHEET NO.
1321	32VB	DU PAGE	388	163
CONTRACT NO. 60W01				
ILLINOIS FED. AID PROJECT				