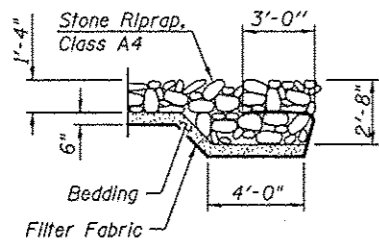


Bench Mark: TBM 10 - Fnd. brass IDOT monument at south side of west headwall of Bensenville Ditch culvert crossing York Rd, approx. 1,200 feet north of IL 19; Elev. 662.75. All elevations are NAVD 88.

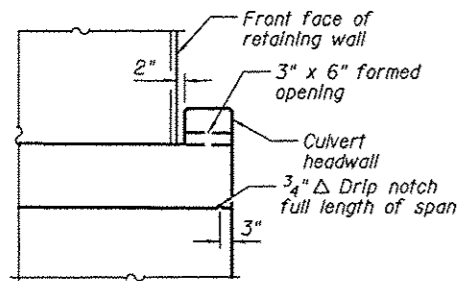
Existing Structure: twin 7'H x 10' W x 102' long RC box culvert under York Rd; ±8'H x ±23.5'W x ±22.5' long RC junction chamber; single cell 8'H x 12'W x 60' long RC box culvert under CPR.

Precast alternate is not allowed.

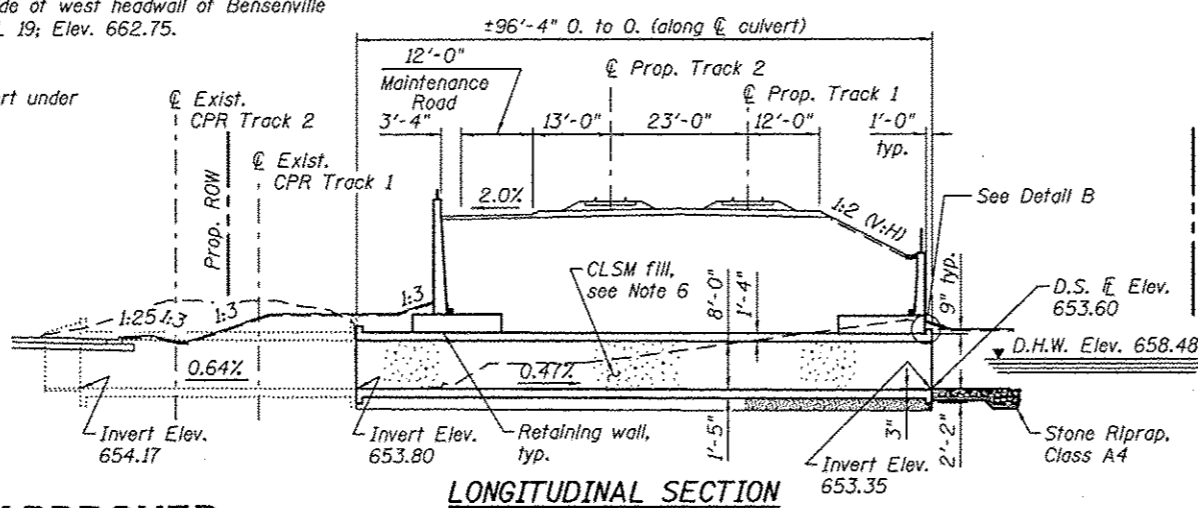
No salvage.



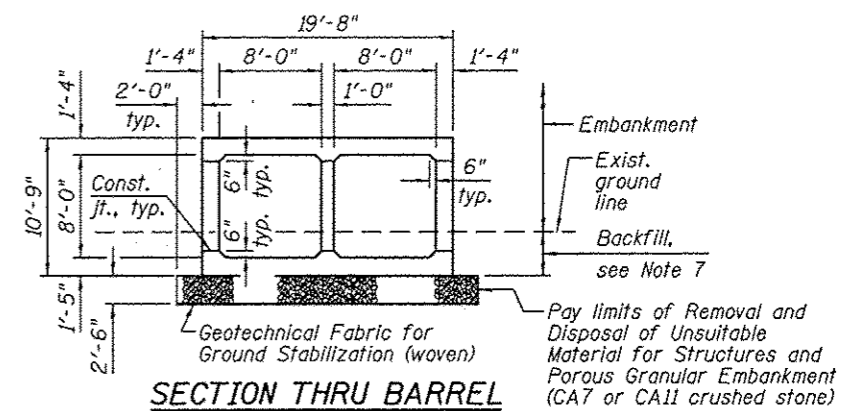
SECTION A-A



DETAIL B



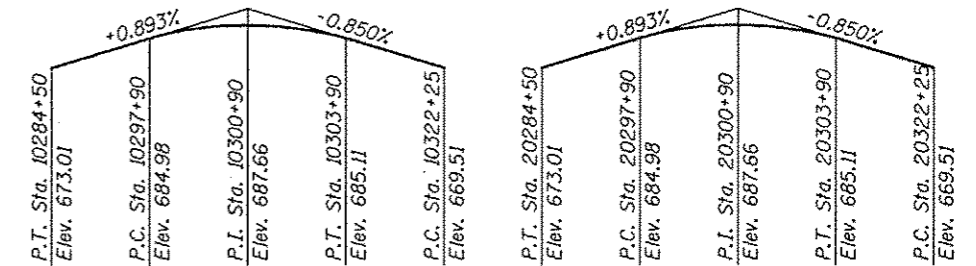
LONGITUDINAL SECTION



SECTION THRU BARREL

APPROVED
For Structural Adequacy Only

Carl Kuyper
Engineer of Bridges & Structures



T/LOW RAIL PROFILE
(along CPR Prop. Track 1)

T/LOW RAIL PROFILE
(along CPR Prop. Track 2)

INDEX OF SHEETS

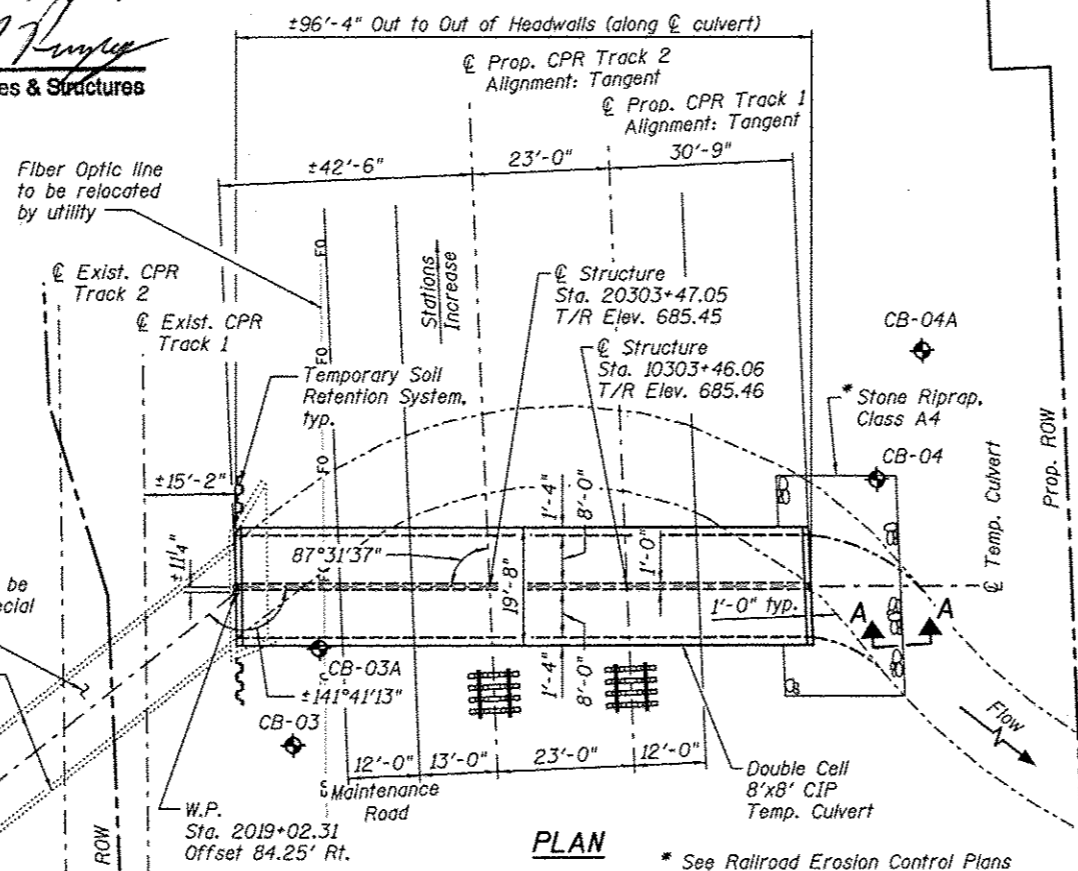
- General Plan
- Details
- Soil Boring Logs

GENERAL NOTES

- Reinforcement Bars shall conform to the requirements of ASTM A615, Grade 60.
- Reinforcement bars designated (E) shall be epoxy coated (minimum thickness 7 mils).
- Depth of Removal and Disposal of Unsuitable Material for Structures is 2'-6". Additional depth shall be removed and replaced if additional unsuitable soils are encountered in the field and/or as directed by the Engineer.
- Layout of slope protection system may be varied in the field to suit ground conditions as directed by the Engineer.
- All construction joints shall be bonded. Construction joints shall be placed at a maximum spacing of 50'-0".
- Culvert will remain in place and will be filled after completion of the permanent culvert. Pay Item for this work is covered in Permanent Culvert Plans.
- Excavation and backfill is paid for as Concrete Box Culverts CPR Special. See Art. 502.01 & 502.13 of the Standard Specifications.
- Net allowable soil bearing pressure is 4,000 psf.
- For Temporary Soil Retention System Details, notes and estimated quantities, see Permanent Culvert Plans.
- The Contractor shall obtain a construction permit from the Illinois Department of Natural Resources (IDNR), Office of Water Resources for any temporary construction activity placed in the water except cofferdams. This shall include the placement of material for run-arounds, causeways, etc. Any permit application by the Contractor shall refer to the IDNR 3704 Floodway Construction permit number allowing permanent construction as shown in the contract plans.
- Plan dimensions and details relative to existing plans are subject to nominal construction variations. The Contractor shall field verify existing dimensions and details affecting new construction and make necessary approved adjustments prior to construction or ordering of materials. Such variations shall not be cause for additional compensation for a change in scope of the work, however, the Contractor will be paid for the quantity actually furnished at the unit price bid for the work.



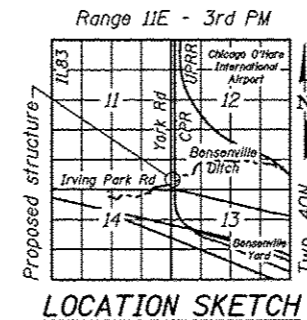
BY: *[Signature]* DATE: 11-02-2012
HDR ENGINEERING, INC.
SHTS. 185-187
LICENSE EXPIRES 11-30-2014



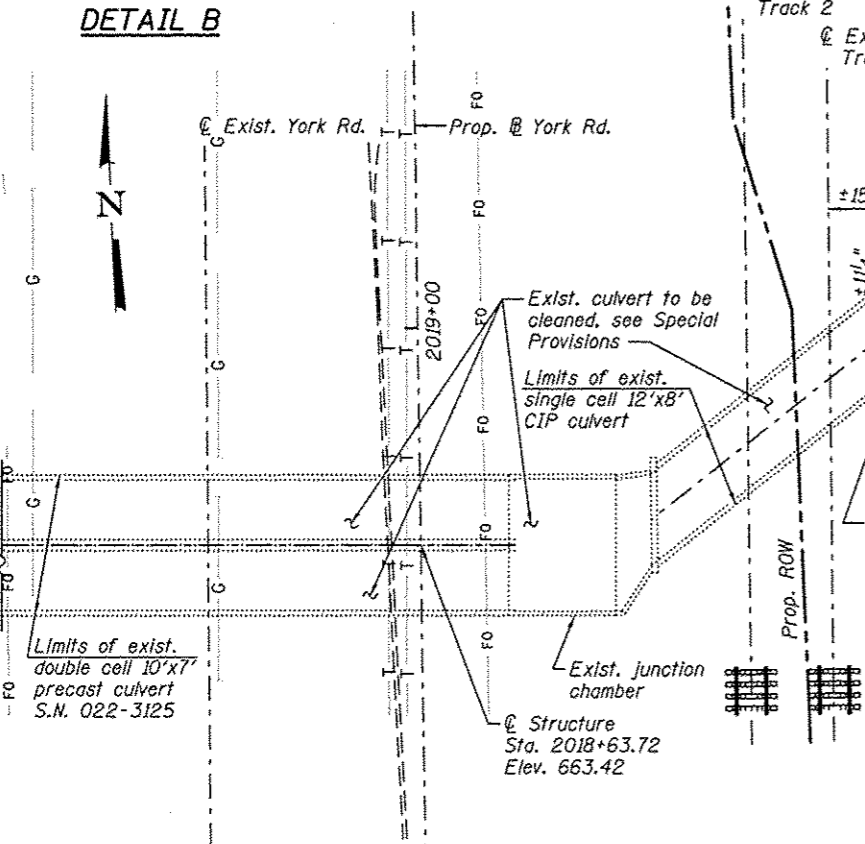
PLAN

TOTAL BILL OF MATERIAL

ITEM	UNIT	TOTAL
Porous Granular Embankment	Cu. Yd.	211
Geotechnical Fabric for Ground Stabilization	Sq. Yd.	253
Removal and Disposal of Unsuitable Material for Structures	Cu. Yd.	211
Reinforcement Bars	Pound	70,310
Reinforcement Bars, Epoxy Coated	Pound	340
Expansion Bolts 3/4 Inch	Each	28
Concrete Box Culverts CPR Special	Cu. Yd.	303.3
Box Culverts to be Cleaned	Foot	292



LOCATION SKETCH



LOADING E100
(Barrel design)

DESIGN STRESSES
FIELD UNITS

f'c = 4,500 psi
fy = 60,000 psi (Reinforcement)

DESIGN SPECIFICATIONS

2010 AREMA Manual for Railway Engineering
2006 Canadian Pacific Railway Requirements for Design of Steel and Concrete Bridges
2002 AASHTO Standard Specifications for Highway Bridges

c:\working\omo\d06141\0223125-60842-001-GPE.DGN

12/13/2012 4:35:25 PM



USER NAME = jmligue	DESIGNED - DLO	REVISED -
FILE NAME = 0223125-60842-001-GPE.DGN	CHECKED - LJC	REVISED -
PLOT SCALE = NONE	DRAWN - RMA	REVISED -
PLOT DATE = 12/3/2012	CHECKED - LGP	REVISED -

STATE OF ILLINOIS
DEPARTMENT OF TRANSPORTATION

GENERAL PLAN
TEMPORARY CULVERT UNDER CPR

SHEET NO. 1 OF 5 SHEETS

F.A.U. RTE. 1321	SECTION 32VB	COUNTY DU PAGE	TOTAL SHEETS 388	SHEET NO. 185
CONTRACT NO. GOW01				
ILLINOIS FED. AID PROJECT				