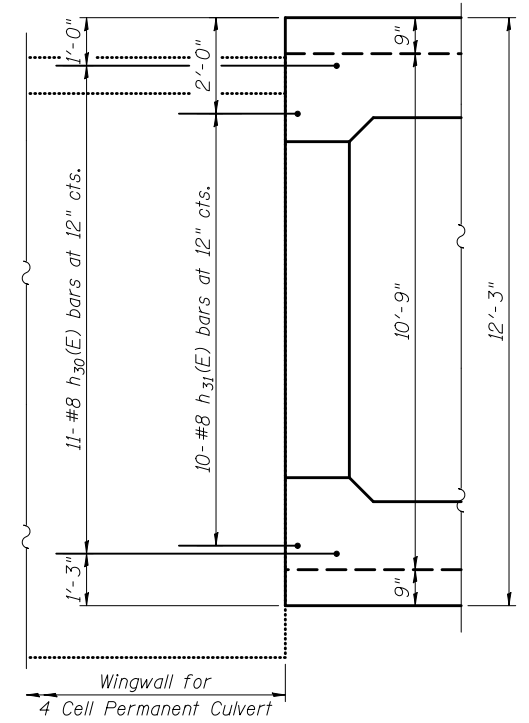


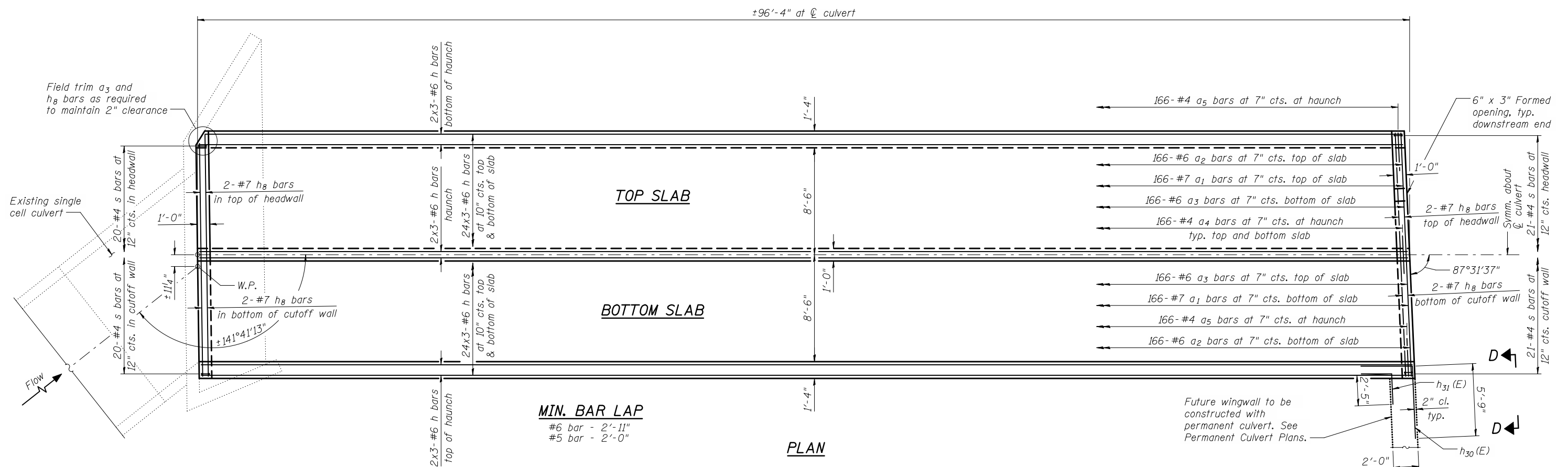
LONGITUDINAL SECTION
Showing bars in center wall

ELEVATION
Showing bars in outside wall

LONGITUDINAL SECTION
Showing bars in center wall



VIEW D-D



MIN. BAR LAP
#6 bar - 2'-11"
#5 bar - 2'-0"

PLAN

Notes:
For working point (W.P.) station and offset, see Sheet 1.
For removal limits of Apron and Wings to build temporary culvert, see Permanent Culvert Plans.
Bars indicated thus 12x4-#5 etc. indicates 12 lines of bars with 4 lengths per line.
Roughening of top slab is included in the cost of Concrete Box Culverts CPR Special.

c:\pwworking\oma\d061444\0223125-60B42-002-TDT.DGN
jmlgus
11/2/2012 11:35:49 AM



USER NAME = jmlgus
FILE NAME = 0223125-60B42-002-TDT.DGN
PLOT SCALE = NONE
PLOT DATE = 11/2/2012

DESIGNED - DLO
CHECKED - LJC
DRAWN - RMA
CHECKED - LGP

REVISED -
REVISED -
REVISED -
REVISED -

**STATE OF ILLINOIS
DEPARTMENT OF TRANSPORTATION**

**DETAILS
TEMPORARY CULVERT UNDER CPR**

SHEET NO. 2 OF 5 SHEETS

F.A.U. RTE.	SECTION	COUNTY	TOTAL SHEETS	SHEET NO.
1321	32VB	DU PAGE	388	186
CONTRACT NO. 60W01				

ILLINOIS FED. AID PROJECT