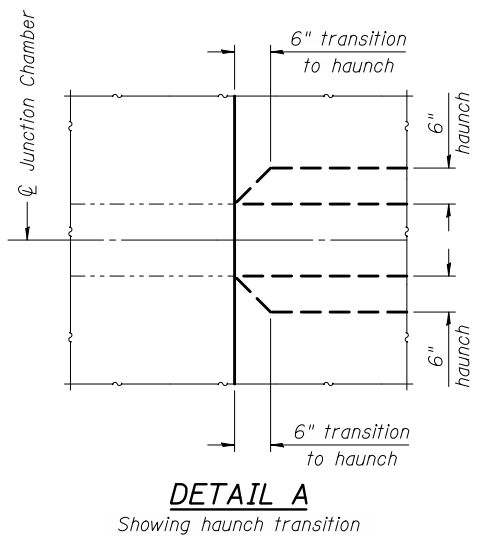
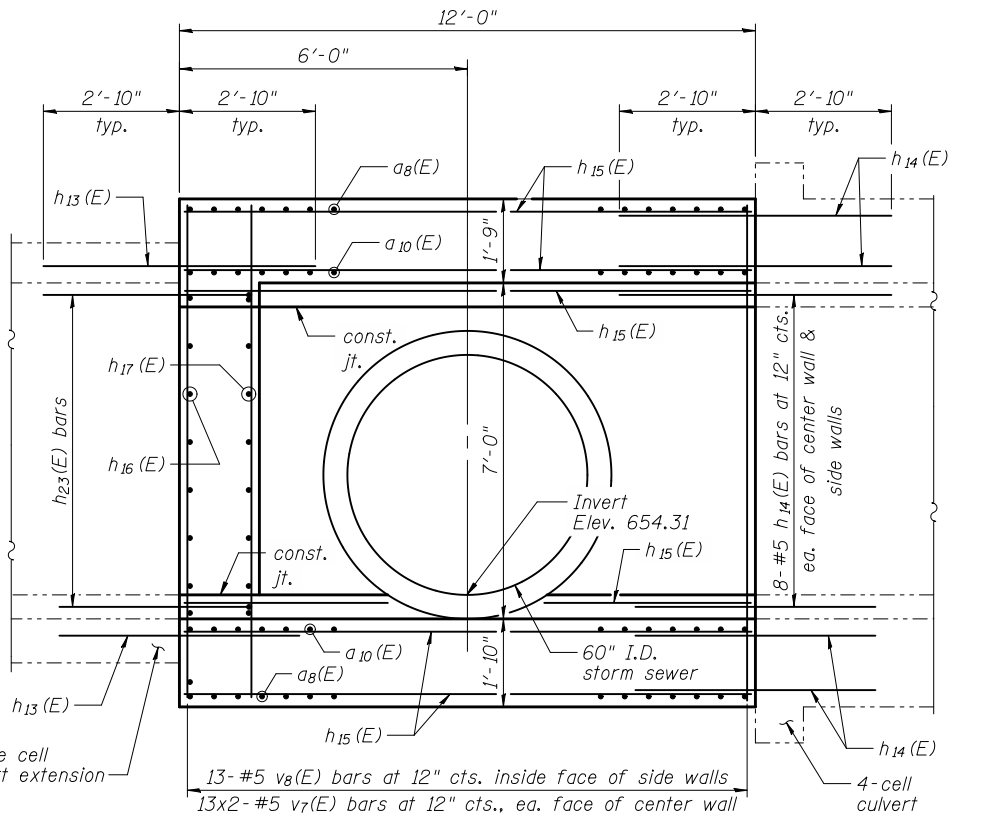
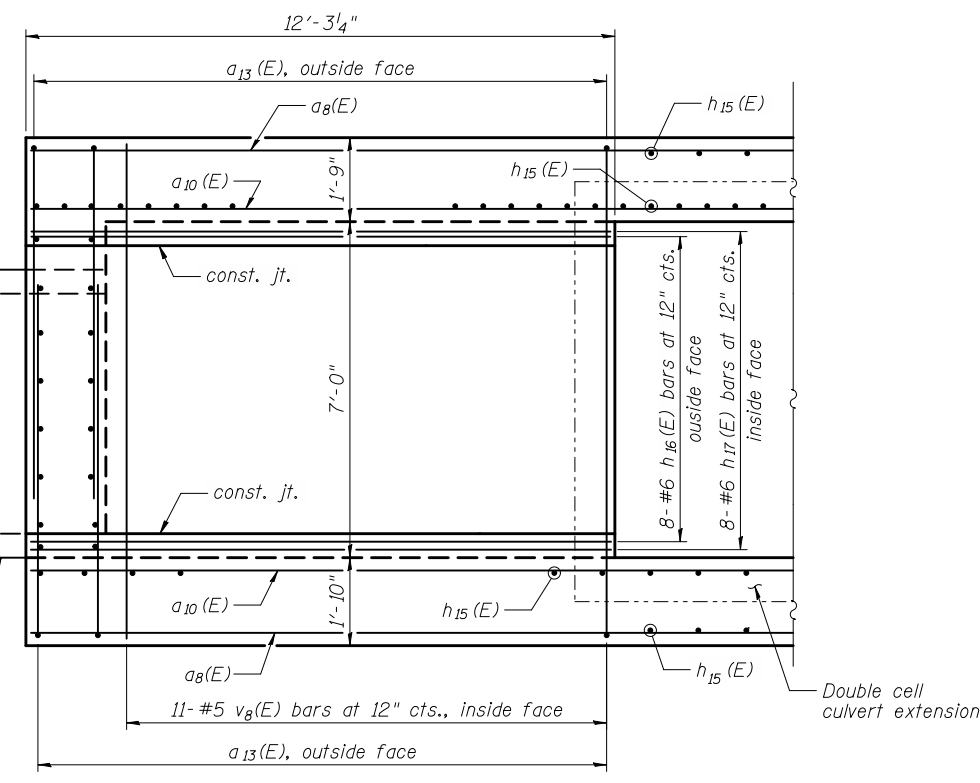
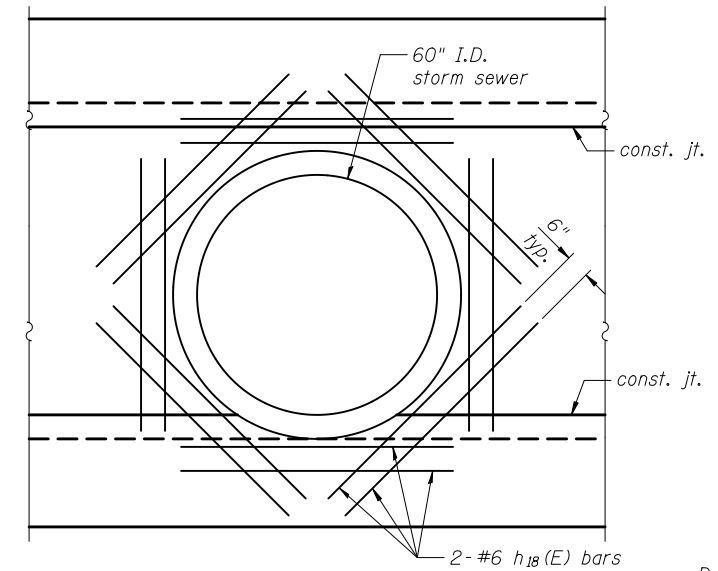
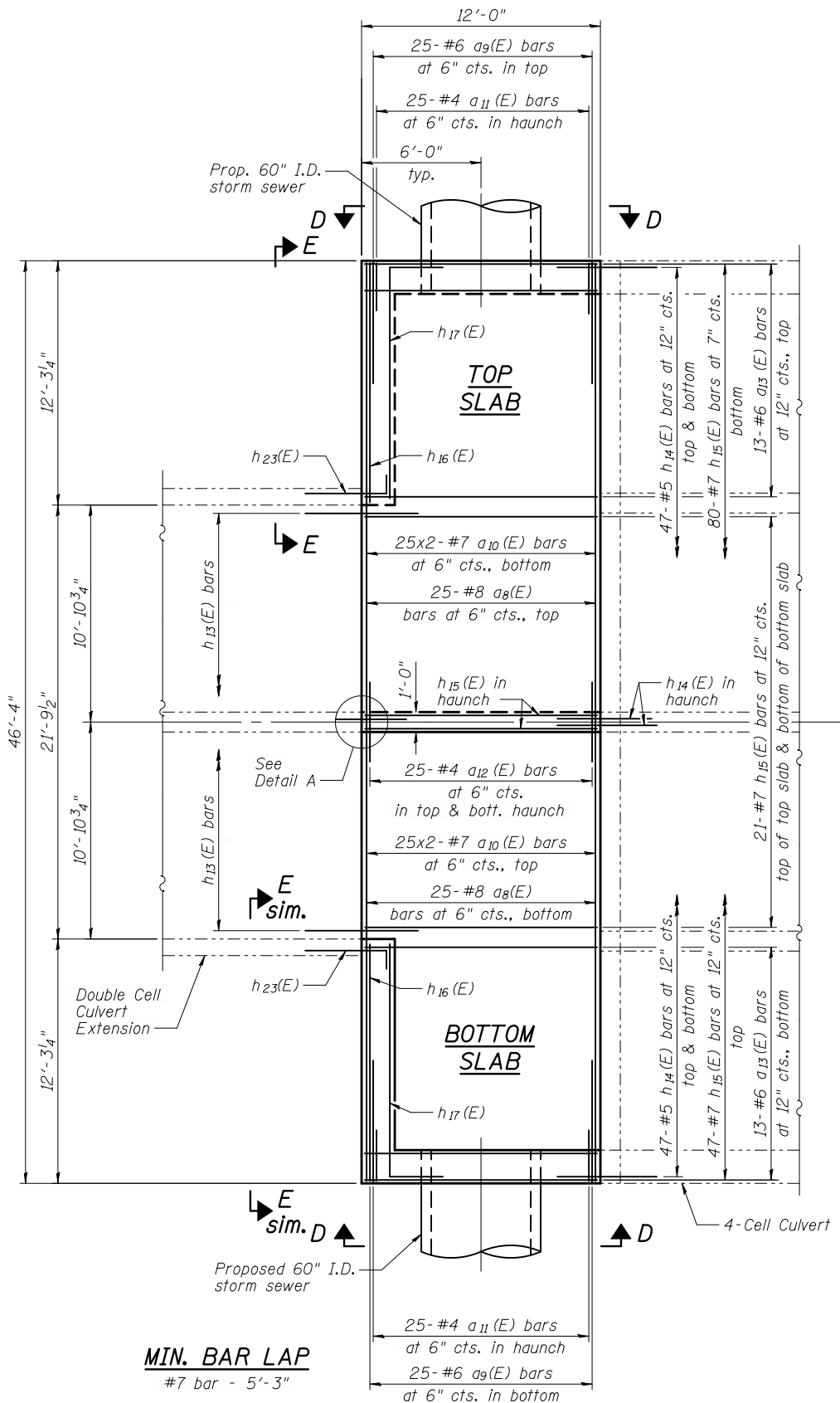


ca:\pwworking\oma\0464045\0223125-60842-006-JDT.DGN
jmlgus

11/2/2012
11:29:02 AM



Notes:
For h₁₃(E) bar details and layout, see double cell box culvert extension details sheets.
All field cut ends of bars shall be coated with epoxy patching material supplied by the manufacturer of the epoxy coating.
Bars indicated thus 12 x 4-#5 etc. indicates 12 lines of bars with 4 lengths per line.



USER NAME = jmlgus
FILE NAME = 0223125-60842-006-JDT.DGN
PLOT SCALE = NONE
PLOT DATE = 11/2/2012

DESIGNED - DLO
CHECKED - LJC
DRAWN - RMA
CHECKED - LGP

REVISED -
REVISED -
REVISED -
REVISED -

**STATE OF ILLINOIS
DEPARTMENT OF TRANSPORTATION**

**JUNCTION CHAMBER DETAILS
STRUCTURE NO. 022-3125**

SHEET NO. 6 OF 13 SHEETS

F.A.P. RTE.	SECTION	COUNTY	TOTAL SHEETS	SHEET NO.
345A	32VB	DU PAGE	388	195
CONTRACT NO. 60W01				

ILLINOIS FED. AID PROJECT