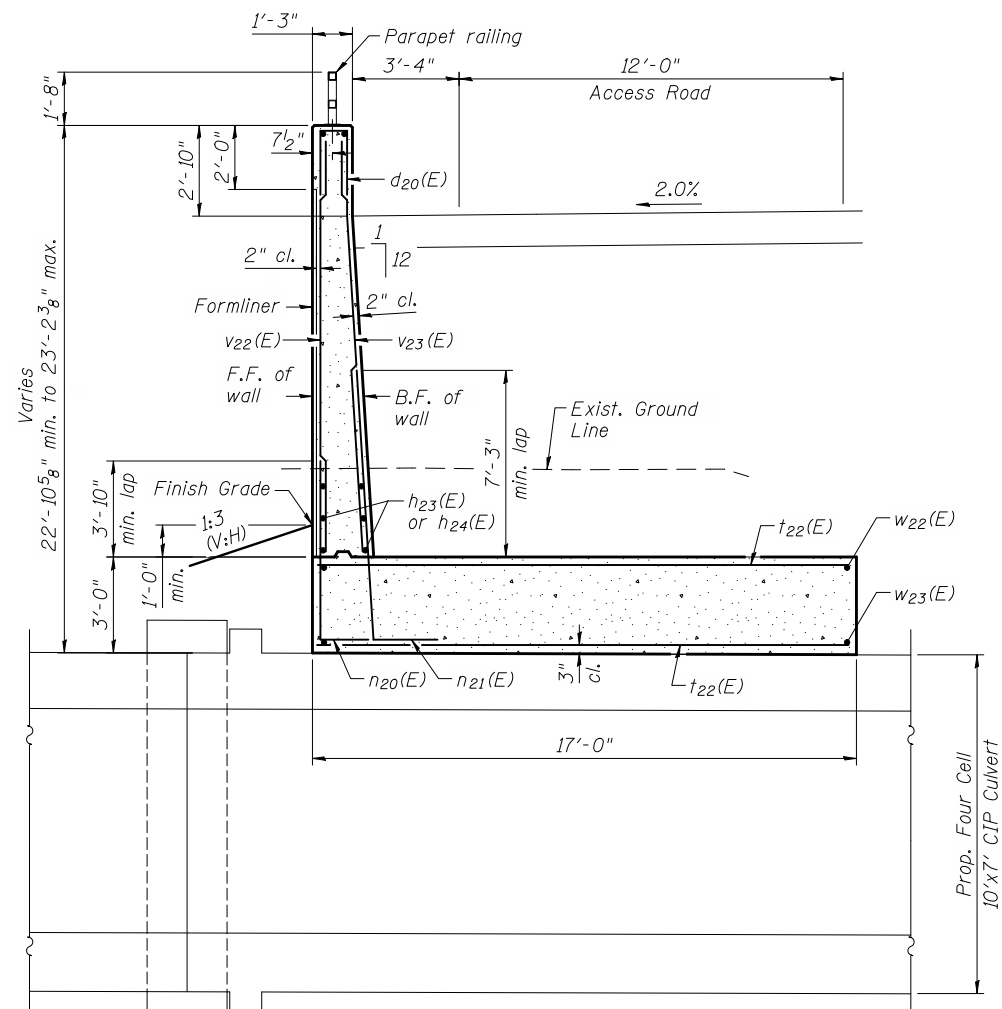
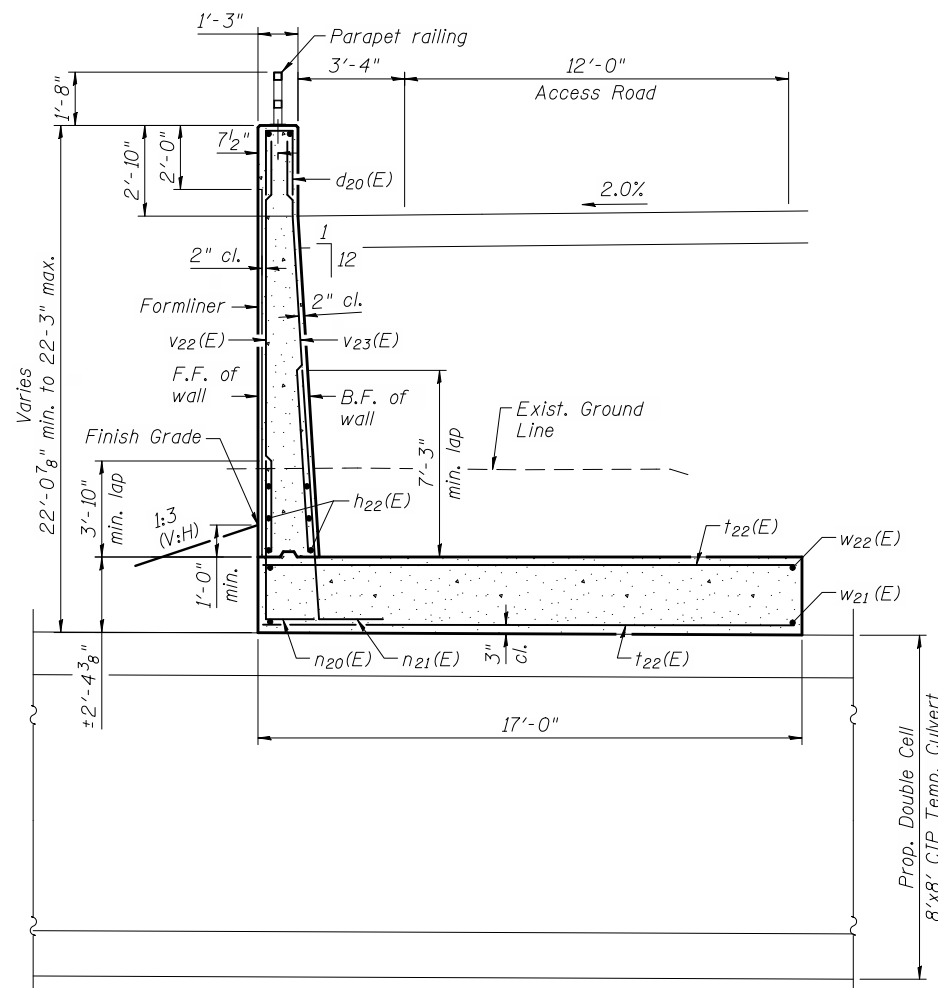


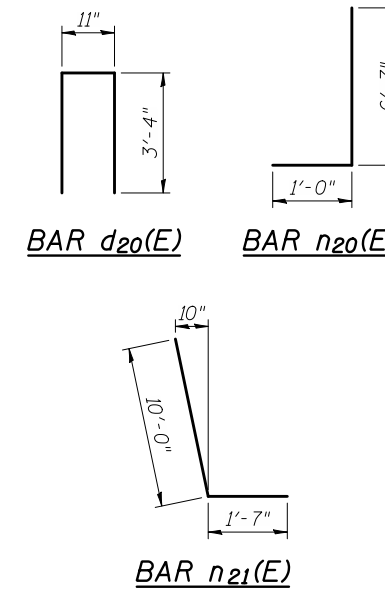
11/2/2012 11:34:5 AM  
 c:\pwworking\oma\d0593503\WXXX-60B42-013-WEL.DGN  
 jmlgus



**SECTION B-B**  
 (Looking upstation)



**SECTION C-C**  
 (Looking upstation)



**CPR RW-2  
 BILL OF MATERIAL**

Bar	No.	Size	Length	Shape
d20(E)	363	#6	7'-7"	Π
h21(E)	44	#5	37'-3"	—
h22(E)	42	#5	23'-8"	—
h23(E)	42	#5	29'-5"	—
h24(E)	42	#5	27'-6"	—
h25(E)	46	#5	40'-1"	—
h27(E)	230	#5	33'-6"	—
h28(E)	92	#5	29'-8"	—
n20(E)	366	#6	7'-7"	J
n21(E)	728	#9	11'-7"	L
t20(E)	871	#8	13'-8"	—
t22(E)	223	#9	16'-8"	—
v20(E)	38	#6	20'-11"	—
v21(E)	38	#9	20'-11"	—
v22(E)	74	#6	19'-6"	—
v23(E)	74	#9	19'-6"	—
v24(E)	71	#6	21'-9"	—
v25(E)	71	#9	21'-9"	—
v26(E)	180	#6	22'-0"	—
v27(E)	180	#9	22'-0"	—
w20(E)	30	#6	37'-8"	—
w21(E)	18	#6	23'-9"	—
w22(E)	36	#6	38'-10"	—
w23(E)	36	#6	31'-4"	—
w24(E)	210	#6	39'-4"	—
Porous Granular Embankment			Cu. Yd.	1,083
Removal and Disposal of Unsuitable Material for Structures			Cu. Yd.	1,538
Form Liner Textured Surface			Sq. Ft.	7,111
Reinforcement Bars, Epoxy Coated			Pound	155,940
Furnishing Steel Piles HP14x89			Foot	6,716
Driving Piles			Foot	6,716
Test Pile Steel HP14x89			Each	1
Geocomposite Wall Drain			Sq. Yd.	692
Pipe Underdrains for Structures 4"			Foot	366
Parapet Railing			Foot	362
Concrete Structures CPR Special			Cu. Yd.	1,142.0

**PILE DATA**

Type: HP14x89  
 Min. Tip Elevation: 630.0  
 Required Resistance: 310 kips  
 Allowable Resistance Available: 155 kips  
 Est. Length: 46 feet  
 No. Piles: 146 + 1 Test Pile

**NOTES:**

- All piles must be driven to the minimum tip elevation shown. At the minimum tip elevation, driving shall be continued until the required resistance is achieved. "Required resistance" is equivalent to "nominal required bearing" in the IDOT Standard Specifications. The nominal driven bearing, as determined by the pile driving formula specified in Art. 512.14 of the IDOT Standard Specifications and modified by the Special Provisions, must be greater than or equal to the required resistance shown.
- Bars indicated thus 13 x 5-#6 etc. indicates 13 lines of bars with 5 lengths per line.
- Pile driving near the proposed culvert shall be performed prior to culvert construction.



USER NAME = jmlgus	DESIGNED - BWC	REVISED -
FILE NAME = WXXX-60B42-013-WEL.DGN	CHECKED - JAR	REVISED -
PLOT SCALE = NONE	DRAWN - JM	REVISED -
PLOT DATE = 11/2/2012	CHECKED - JAR	REVISED -

**STATE OF ILLINOIS  
 DEPARTMENT OF TRANSPORTATION**

**CPR RW-2 SECTIONS & BILL OF MATERIAL  
 CPR RETAINING WALLS**

SHEET NO. 18 OF 42 SHEETS

F.A.P. RTE.	SECTION	COUNTY	TOTAL SHEETS	SHEET NO.
345A	32VB	DU PAGE	388	220
CONTRACT NO. 60W01				
ILLINOIS FED. AID PROJECT				