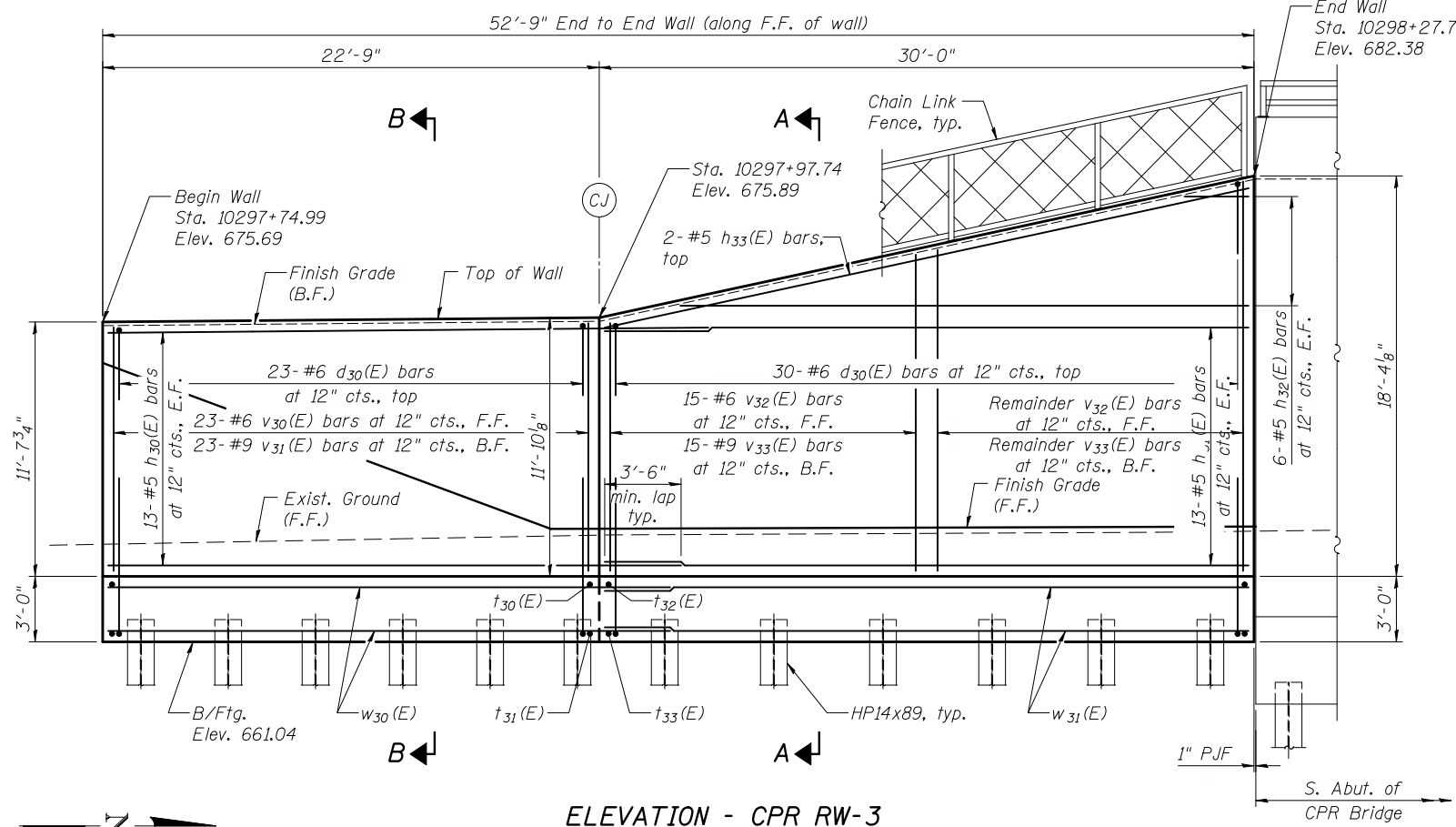
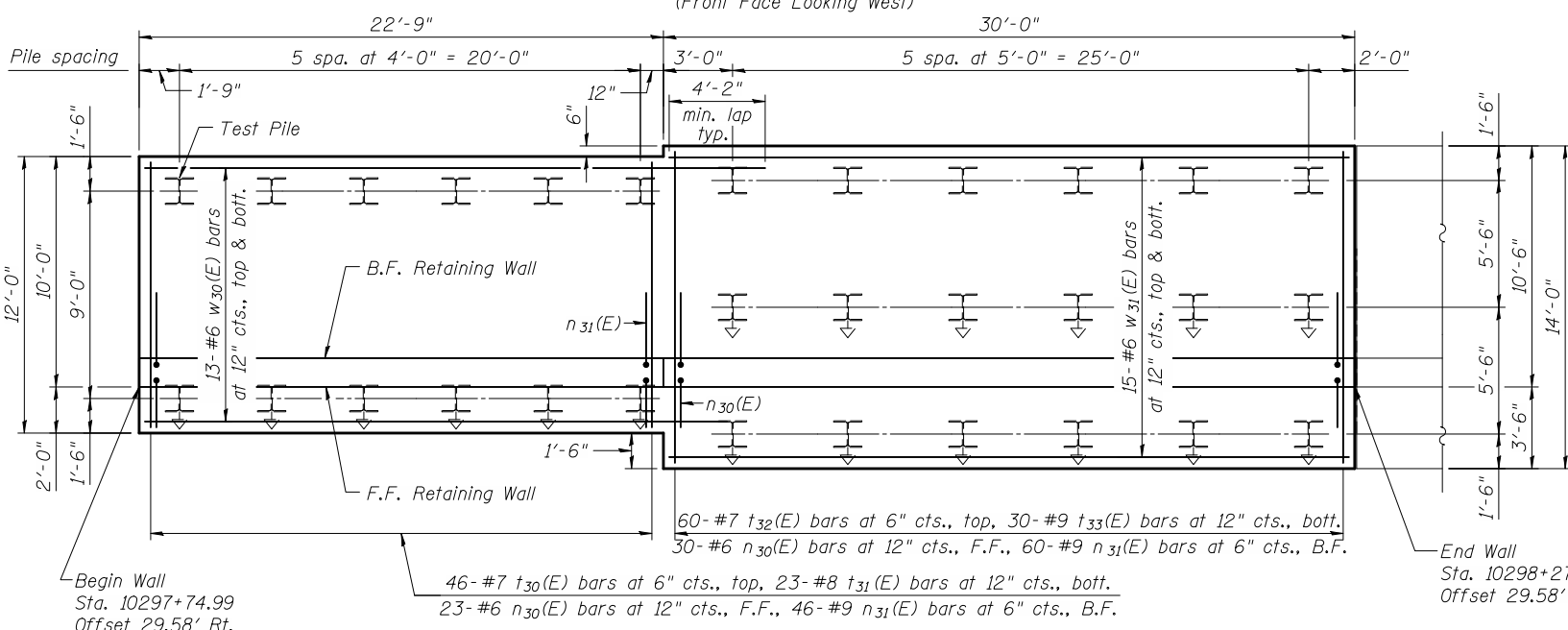


cc:\pwworking\oma\d0593503\WXXX-60B42-019-WEL.DGN  
jmlgus  
11/2/2012 11:31:20 AM



**ELEVATION - CPR RW-3**  
(Front Face Looking West)



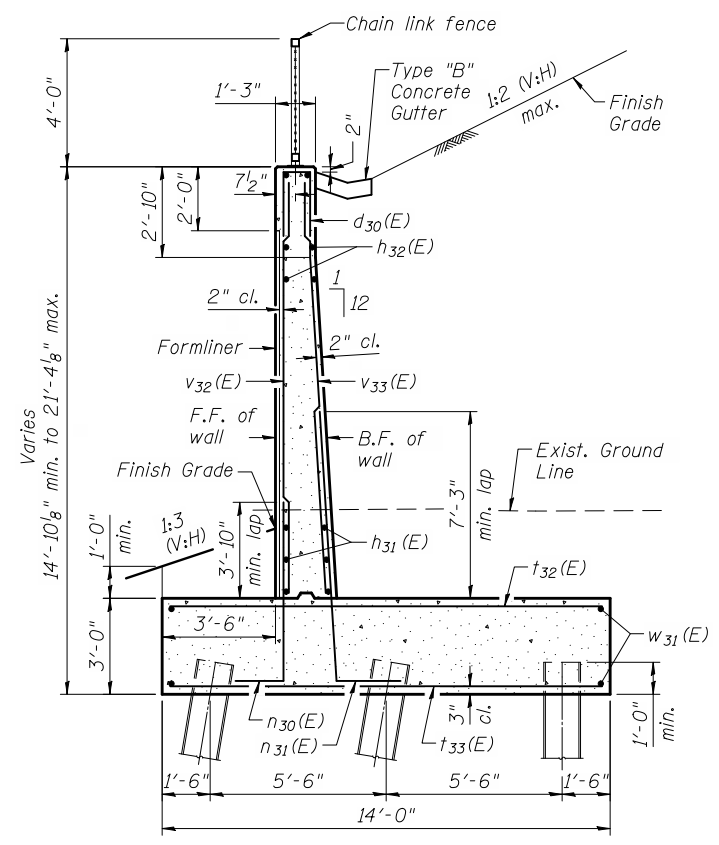
**FOOTING PLAN - CPR RW-3**

**PILE DATA**

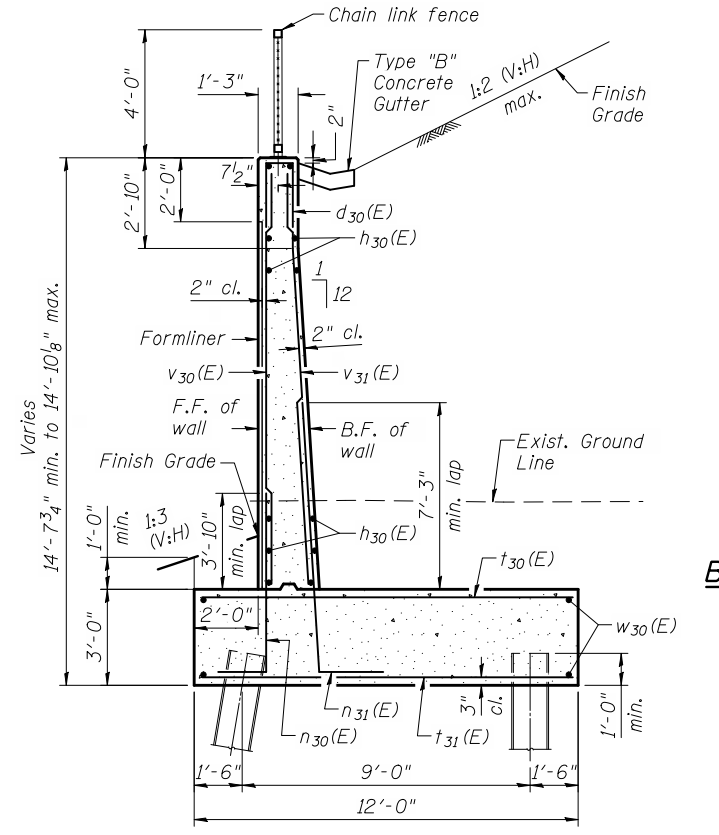
Type: HP14x89  
Min. Tip Elevation: 650.0  
Required Resistance: 272 kips  
Allowable Resistance Available: 136 kips  
Est. Length: 54 feet  
No. Piles: 29 + 1 Test Pile

**NOTES:**

- All piles must be driven to the minimum tip elevation shown. At the minimum tip elevation, driving shall be continued until the required resistance is achieved. "Required resistance" is equivalent to "nominal required bearing" in the IDOT Standard Specifications. The nominal driven bearing, as determined by the pile driving formula specified in Art. 512.14 of the IDOT Standard Specifications and modified by the Special Provisions, must be greater than or equal to the required resistance shown.
- Bars indicated thus 13 x 5-#6 etc. indicates 13 lines of bars with 5 lengths per line.
- See Sheet 4 for Joint Details.



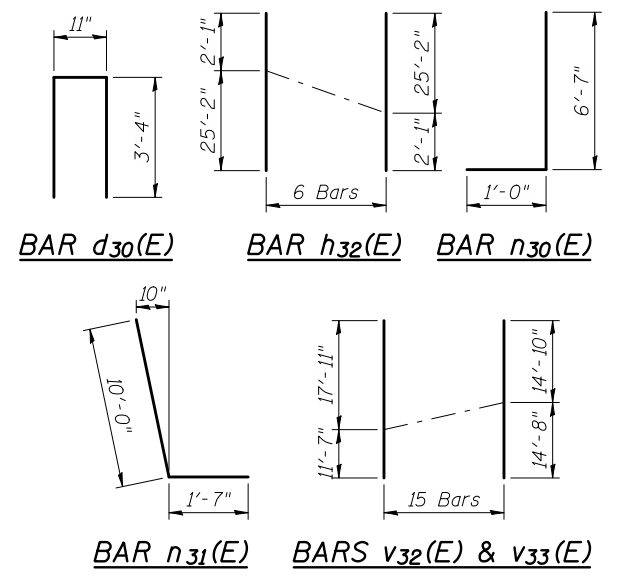
**SECTION A-A**  
(Looking downstation)



**SECTION B-B**  
(Looking downstation)

**CPR RW-3**  
**BILL OF MATERIAL**

Bar	No.	Size	Length	Shape
d <sub>30</sub> (E)	53	#6	7'-7"	Π
h <sub>30</sub> (E)	26	#5	26'-3"	—
h <sub>31</sub> (E)	26	#5	29'-8"	—
h <sub>32</sub> (E)	6	#5	27'-3"	—
h <sub>33</sub> (E)	2	#5	30'-4"	—
n <sub>30</sub> (E)	53	#6	7'-7"	J
n <sub>31</sub> (E)	106	#9	11'-7"	L
t <sub>30</sub> (E)	46	#7	11'-8"	—
t <sub>31</sub> (E)	23	#8	11'-8"	—
t <sub>32</sub> (E)	60	#7	13'-8"	—
t <sub>33</sub> (E)	30	#9	13'-8"	—
v <sub>30</sub> (E)	23	#6	11'-5"	—
v <sub>31</sub> (E)	23	#9	11'-5"	—
v <sub>32</sub> (E)	15	#6	29'-6"	—
v <sub>33</sub> (E)	15	#9	29'-6"	—
w <sub>30</sub> (E)	26	#6	26'-11"	—
w <sub>31</sub> (E)	30	#6	29'-8"	—
Porous Granular Embankment			Cu. Yd.	106
Removal and Disposal of Unsuitable Material for Structures			Cu. Yd.	220
Form Liner Textured Surface			Sq. Ft.	615
Reinforcement Bars, Epoxy Coated			Pound	17,860
Furnishing Steel Piles HP14x89			Foot	1,566
Driving Piles			Foot	1,566
Test Pile Steel HP14x89			Each	1
Geocomposite Wall Drain			Sq. Yd.	71
Pipe Underdrains for Structures 4"			Foot	53
Chain Link Fence, 4'			Foot	54
Concrete Structures CPR Special			Cu. Yd.	120.6



USER NAME = jmlgus	DESIGNED - BWC	REVISED -
FILE NAME = WXXX-60B42-019-WEL.DGN	CHECKED - JAR	REVISED -
PLOT SCALE = NONE	DRAWN - JM	REVISED -
PLOT DATE = 11/2/2012	CHECKED - JAR	REVISED -

**STATE OF ILLINOIS**  
**DEPARTMENT OF TRANSPORTATION**

**CPR RW-3 PLAN AND ELEVATION**  
**CPR RETAINING WALLS**  
SHEET NO. 19 OF 42 SHEETS

F.A.P. RTE. 345A	SECTION 32VB	COUNTY DU PAGE	TOTAL SHEETS 388	SHEET NO. 221
CONTRACT NO. 60W01				ILLINOIS FED. AID PROJECT