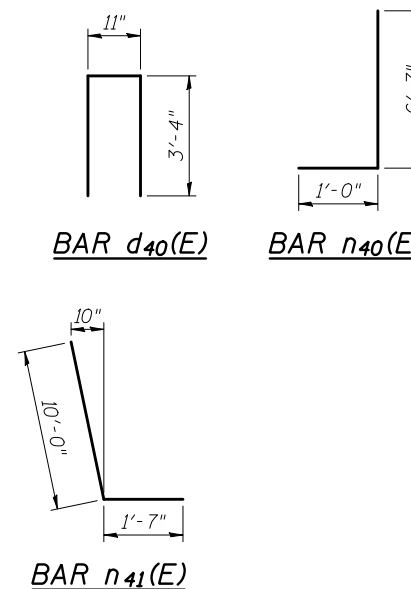


**CPR RW-4  
BILL OF MATERIAL**

Bar	No.	Size	Length	Shape
d <sub>40</sub> (E)	204	#6	7'-7"	⌈
h <sub>40</sub> (E)	114	#5	29'-8"	—
h <sub>41</sub> (E)	118	#5	33'-6"	—
h <sub>42</sub> (E)	36	#5	27'-1"	—
n <sub>40</sub> (E)	204	#6	7'-7"	⌋
n <sub>41</sub> (E)	408	#9	11'-7"	⌋
t <sub>40</sub> (E)	612	#8	13'-8"	—
v <sub>40</sub> (E)	60	#6	18'-7"	—
v <sub>41</sub> (E)	60	#9	18'-7"	—
v <sub>42</sub> (E)	60	#6	18'-0"	—
v <sub>43</sub> (E)	60	#9	18'-0"	—
v <sub>44</sub> (E)	60	#6	17'-6"	—
v <sub>45</sub> (E)	60	#9	17'-6"	—
v <sub>46</sub> (E)	24	#6	17'-3"	—
v <sub>47</sub> (E)	24	#9	17'-3"	—
w <sub>40</sub> (E)	180	#6	37'-5"	—
Porous Granular Embankment		Cu. Yd.	480	
Removal and Disposal of Unsuitable Material for Structures		Cu. Yd.	514	
Form Liner Textured Surface		Sq. Ft.	3,337	
Reinforcement Bars, Epoxy Coated		Pound	79,770	
Furnishing Steel Piles HP14x89		Foot	4,444	
Driving Piles		Foot	4,444	
Test Pile Steel HP14x89		Each	1	
Geocomposite Wall Drain		Sq. Yd.	316	
Pipe Underdrains for Structures 4"		Foot	204	
Parapet Railing		Foot	204	
Concrete Structures CPR Special		Cu. Yd.	566.4	

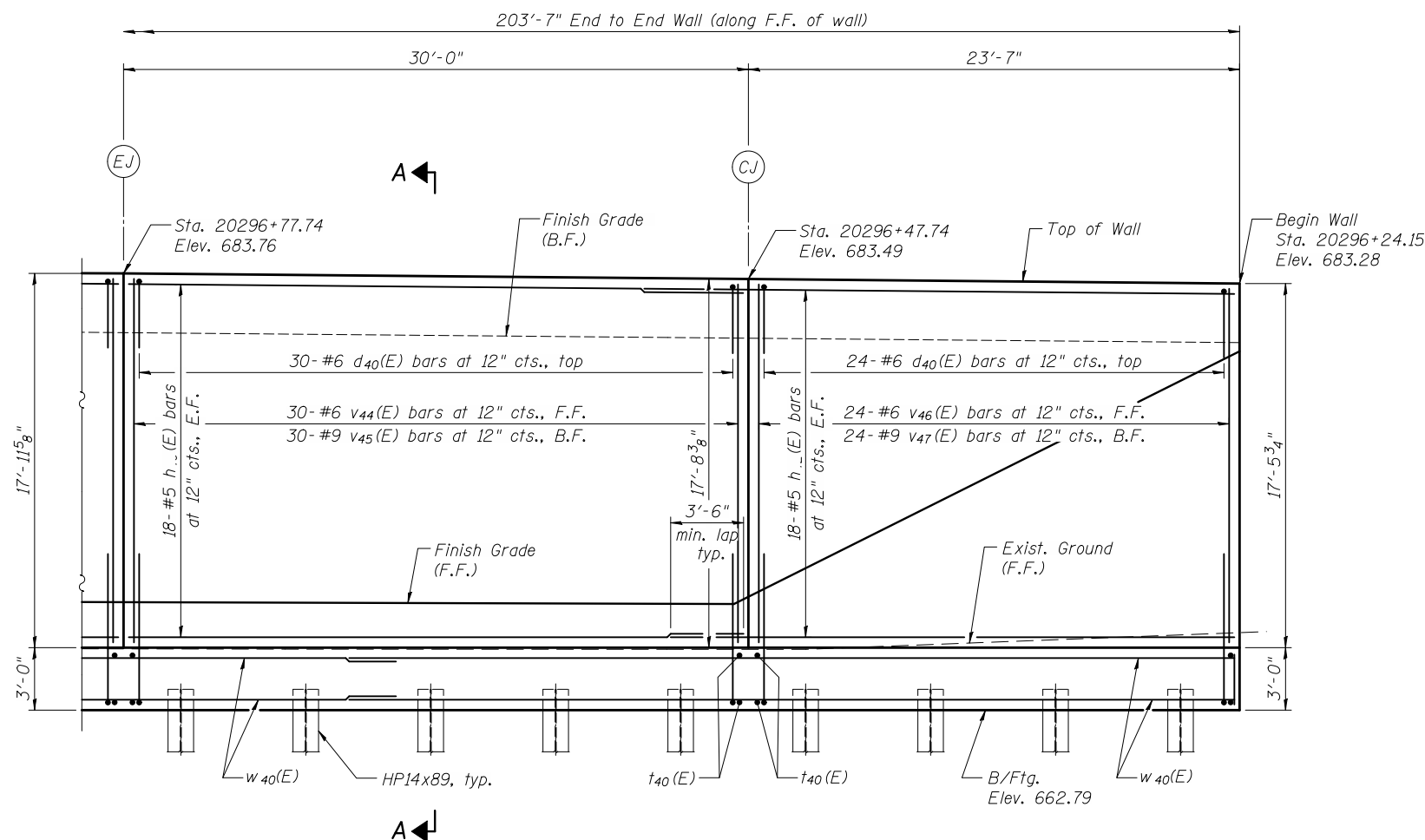


**PILE DATA**

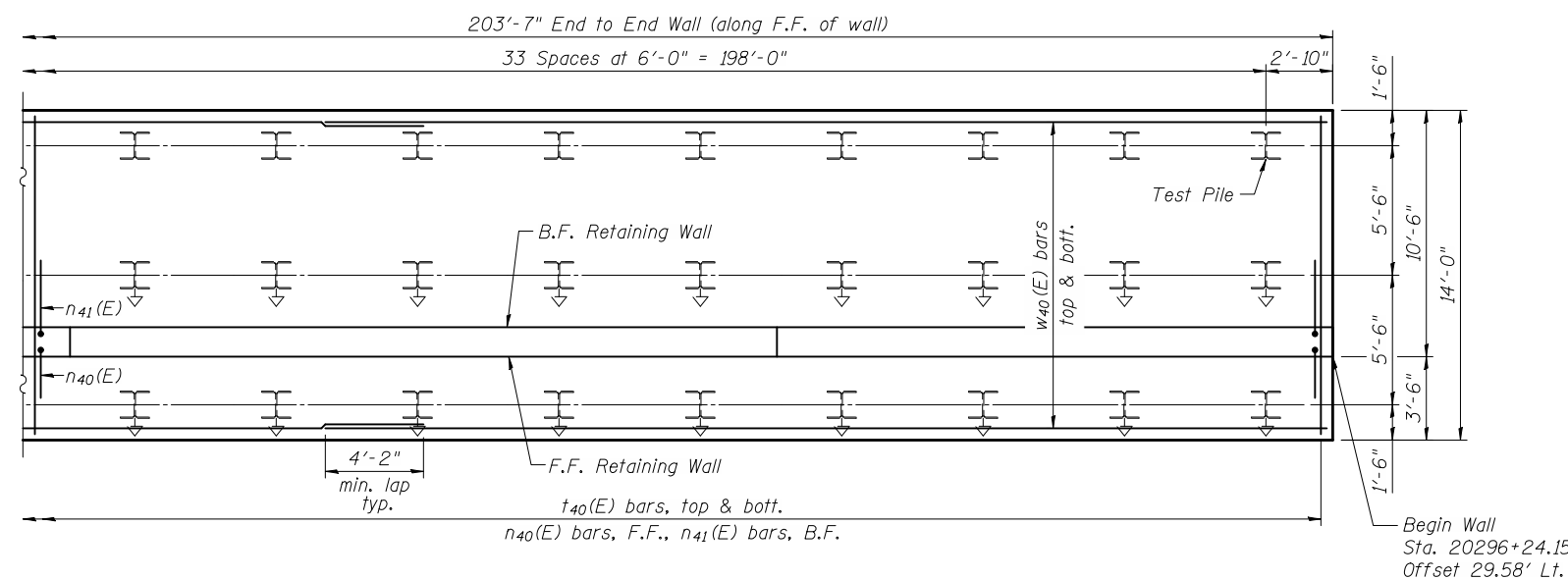
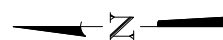
Type: HP14x89  
 Min. Tip Elevation: 641.0  
 Required Resistance: 258 kips  
 Allowable Resistance: 129 kips  
 Available: 129 kips  
 Est. Length: 44 feet  
 No. Piles: 101 + 1 Test Pile

**NOTES:**

- All piles must be driven to the minimum tip elevation shown. At the minimum tip elevation, driving shall be continued until the required resistance is achieved. "Required resistance" is equivalent to "nominal required bearing" in the IDOT Standard Specifications. The nominal driven bearing, as determined by the pile driving formula specified in Art. 512.14 of the IDOT Standard Specifications and modified by the Special Provisions, must be greater than or equal to the required resistance shown.
- Bars indicated thus 13 x 5-#6 etc. indicates 13 lines of bars with 5 lengths per line.



**PARTIAL ELEVATION - CPR RW-4**  
(Front Face Looking East)



**PARTIAL FOOTING PLAN - CPR RW-4**

ca:\pwworking\oma\d0593503\WXXX-60B42-020-WEL.DGN  
jmlgus

11/2/2012 11:31:31 AM



USER NAME = jmlgus	DESIGNED - BWC	REVISED -
FILE NAME = WXXX-60B42-020-WEL.DGN	CHECKED - JAR	REVISED -
PLOT SCALE = NONE	DRAWN - JM	REVISED -
PLOT DATE = 11/2/2012	CHECKED - JAR	REVISED -

**STATE OF ILLINOIS  
DEPARTMENT OF TRANSPORTATION**

**CPR RW-4 PLAN AND ELEVATION  
CPR RETAINING WALLS**

SHEET NO. 22 OF 42 SHEETS

F.A.P. RTE.	SECTION	COUNTY	TOTAL SHEETS	SHEET NO.
345A	32VB	DU PAGE	388	224
CONTRACT NO. 60W01				
ILLINOIS FED. AID PROJECT				