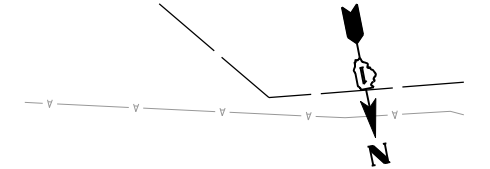
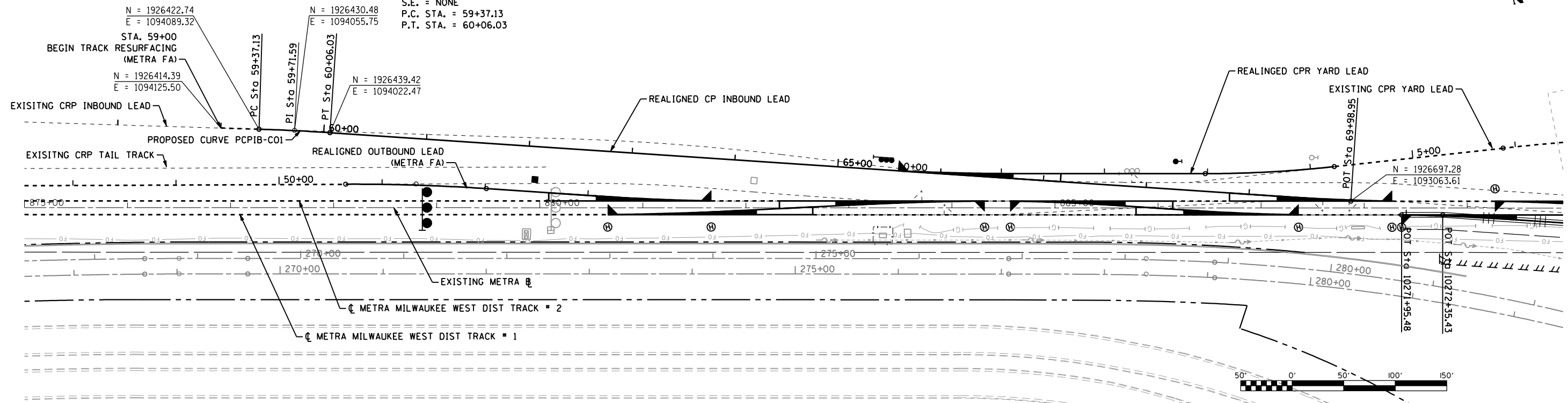


LEGEND
 - - - - - EXISTING TRACK
 ——— TRACK TO BE REALIGNED
 - - - - - TRACK TO BE RESURFACED
 Ⓜ RELOCATED SWITCH HEATER (LOCATION APPROXIMATE, FINAL LOCATION TBD IN FIELD)

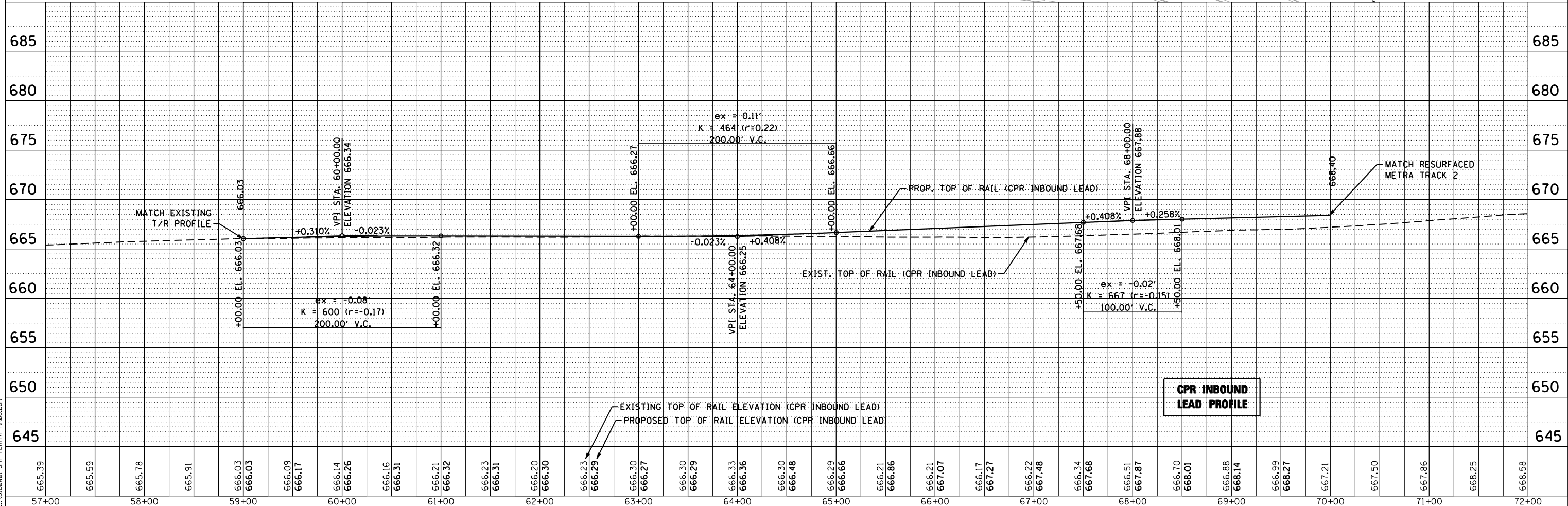
PROP. CURVE PCIB-C01
 PI STA. = 59+71.59
 $\Delta = 2^\circ 04' 01''$ (RT)
 $D = 3^\circ 00' 00''$ (CHORD DEF.)
 $R = 1,910.08'$
 $T = 34.46'$
 $L = 68.90'$
 $E = 0.31'$
 $S.E. = NONE$
 P.C. STA. = 59+37.13
 P.T. STA. = 60+06.03



PLAN	SURVEYED	DATE
	PLOTTED	BY
	GRADES CHECKED	
	STRUCTURE NOTATIONS CHECKED	
	NOTE BOOK NO.	
	CADD FILE NAME	



PROFILE	SURVEYED	DATE
	PLOTTED	BY
	GRADES CHECKED	
	STRUCTURE NOTATIONS CHECKED	
	NOTE BOOK NO.	
	CADD FILE NAME	



FILE NAME = ... \D06001-SHT-PL-PRF-RR08.DGN

 HDR ENGINEERING, INC.	USER NAME = nraterr DESIGNED - NMR DRAWN - NMR PLOT SCALE = 100.0000' / IN. PLOT DATE = 11/2/2012	REVISIONS REVISIONS REVISIONS REVISIONS REVISIONS	STATE OF ILLINOIS DEPARTMENT OF TRANSPORTATION	CANADIAN PACIFIC RAILWAY INBOUND LEAD PLAN AND PROFILE	F.A.U. RTE. 1321 SECTION 32VB COUNTY DUPAGE ILLINOIS FED. AID PROJECT	TOTAL SHEETS 388 SHEET NO. 319 CONTRACT NO. 60W01
	SCALE: 1" = 50' SHEET NO. 11 OF 12 SHEETS STA. 57+00 TO STA. 72+00					