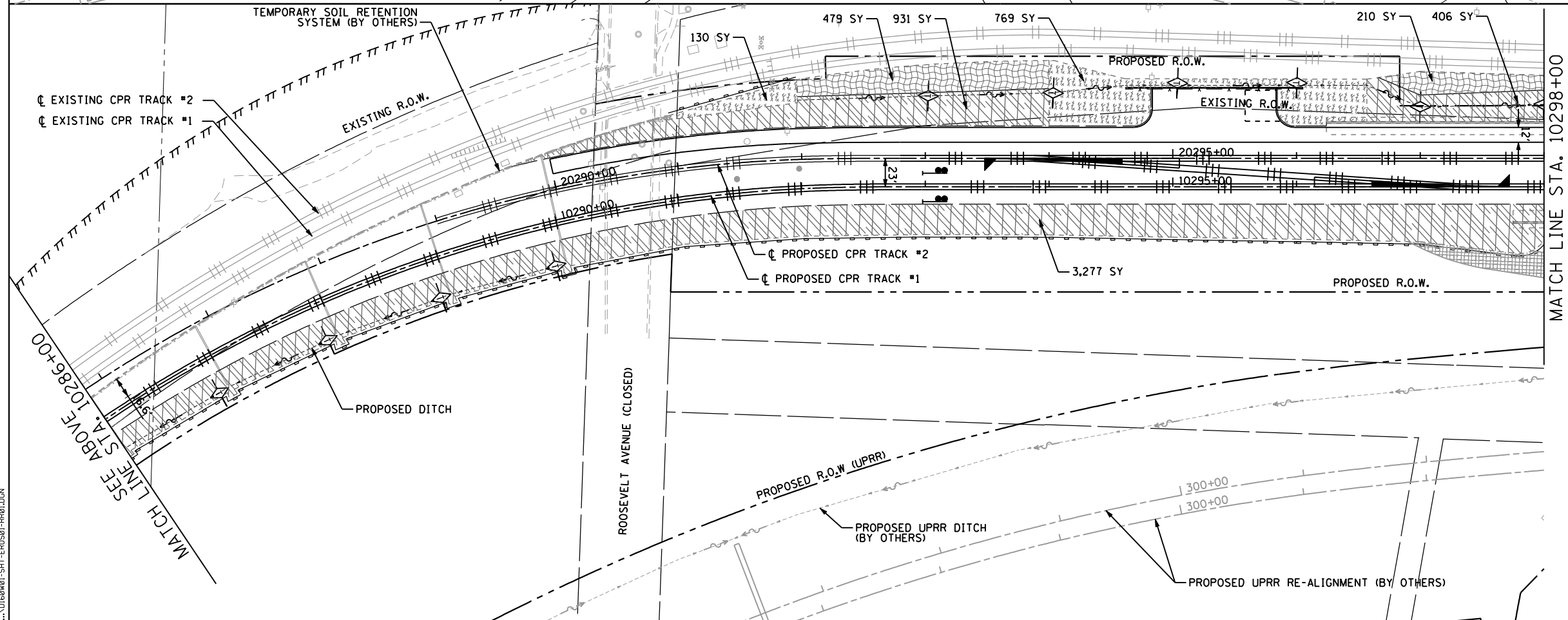
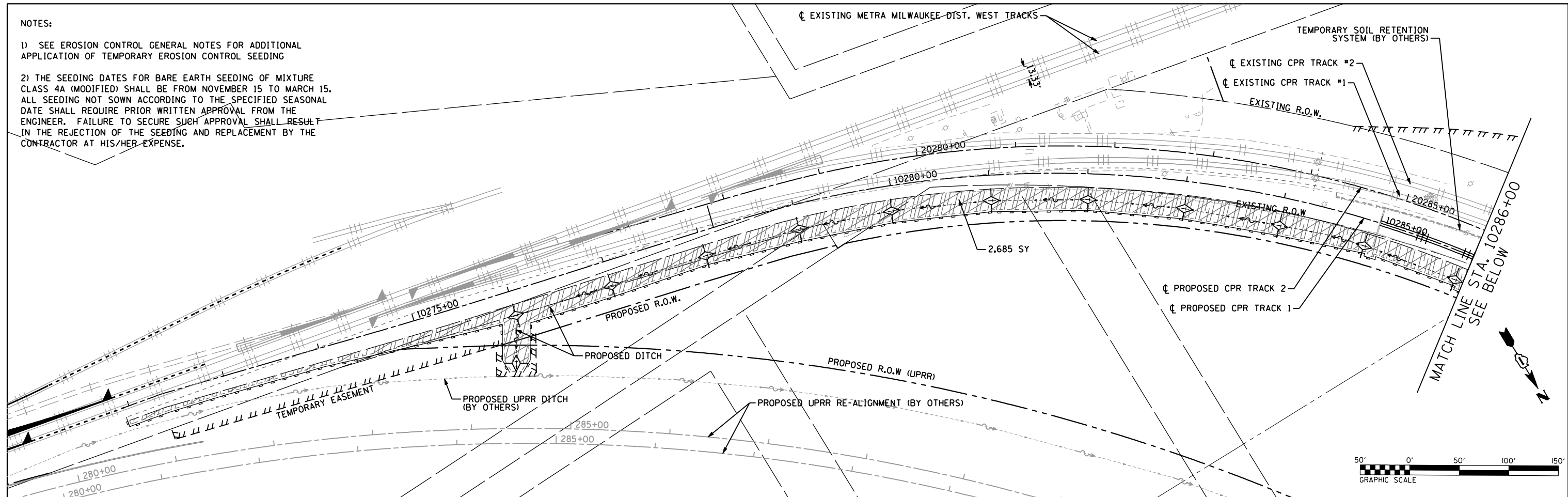


**NOTES:**

- 1) SEE EROSION CONTROL GENERAL NOTES FOR ADDITIONAL APPLICATION OF TEMPORARY EROSION CONTROL SEEDING
- 2) THE SEEDING DATES FOR BARE EARTH SEEDING OF MIXTURE CLASS 4A (MODIFIED) SHALL BE FROM NOVEMBER 15 TO MARCH 15. ALL SEEDING NOT SOWN ACCORDING TO THE SPECIFIED SEASONAL DATE SHALL REQUIRE PRIOR WRITTEN APPROVAL FROM THE ENGINEER. FAILURE TO SECURE SUCH APPROVAL SHALL RESULT IN THE REJECTION OF THE SEEDING AND REPLACEMENT BY THE CONTRACTOR AT HIS/HER EXPENSE.



**LEGEND**

- PERIMETER EROSION BARRIER
- TOPSOIL FURNISH AND PLACE, 6" SEEDING, CLASS 4A (MODIFIED) TURF REINFORCEMENT MAT EROSION CONTROL BLANKET
- TOPSOIL FURNISH AND PLACE, 6" SEEDING, CLASS 4A (MODIFIED) EROSION CONTROL BLANKET
- TEMPORARY EROSION CONTROL SEEDING MULCH, METHOD 4 SEEDING, CLASS 7
- TEMPORARY DITCH CHECKS
- INLET AND PIPE PROTECTION
- STONE RIPRAP

FILE NAME = ...\\D162001-SHT-EROSION-RR01.DGN



USER NAME = nraterrm	DESIGNED - NMR	REVISED -
PLOT SCALE = 100.0000' / IN.	DRAWN - NMR	REVISED -
PLOT DATE = 11/2/2012	CHECKED - MPH	REVISED -
	DATE - 11-02-2012	REVISED -

**STATE OF ILLINOIS  
DEPARTMENT OF TRANSPORTATION**

**CANADIAN PACIFIC RAILWAY  
EROSION CONTROL PLAN STAGE RR-1 (RAILROAD)**

SCALE: 1"=50' SHEET NO. 1 OF 6 SHEETS STA. 10272+40.23 TO STA. 10298+00

F.A.U. RTE.	SECTION	COUNTY	TOTAL SHEETS	SHEET NO.
1321	32VB	DUPAGE	388	348
				CONTRACT NO. 60W01
ILLINOIS FED. AID PROJECT				