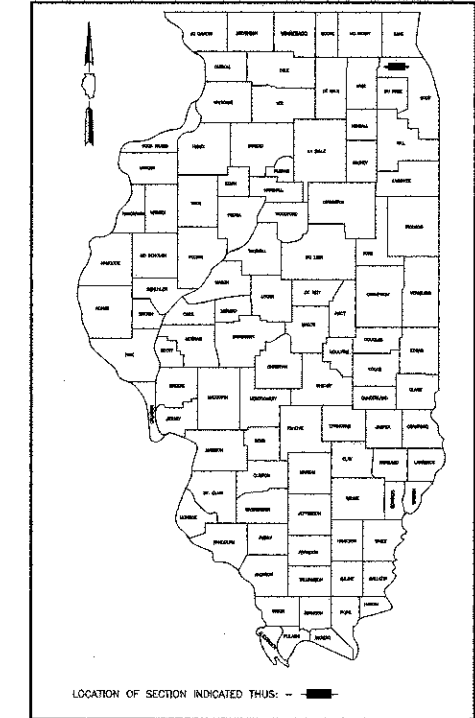


STATE OF ILLINOIS  
DEPARTMENT OF TRANSPORTATION  
DIVISION OF HIGHWAYS

# PLANS FOR PROPOSED FEDERAL AID PROJECT

F.A.U. 3512 (U.S. ROUTE 14 NORTHWEST HIGHWAY), F.A.U. 2655 (DAVIS STREET)  
AND F.A.U. 2655 (ARTHUR AVENUE)  
550 FEET WEST OF ARTHUR AVENUE TO WATERMAN AVENUE  
RAILROAD GRADE CROSSING IMPROVEMENT AND TRAFFIC SIGNAL MODIFICATION  
SECTION 02-00177-00-WR  
PROJECT NO: M-8003(426)  
VILLAGE OF ARLINGTON HEIGHTS  
COOK COUNTY  
C-91-252-04

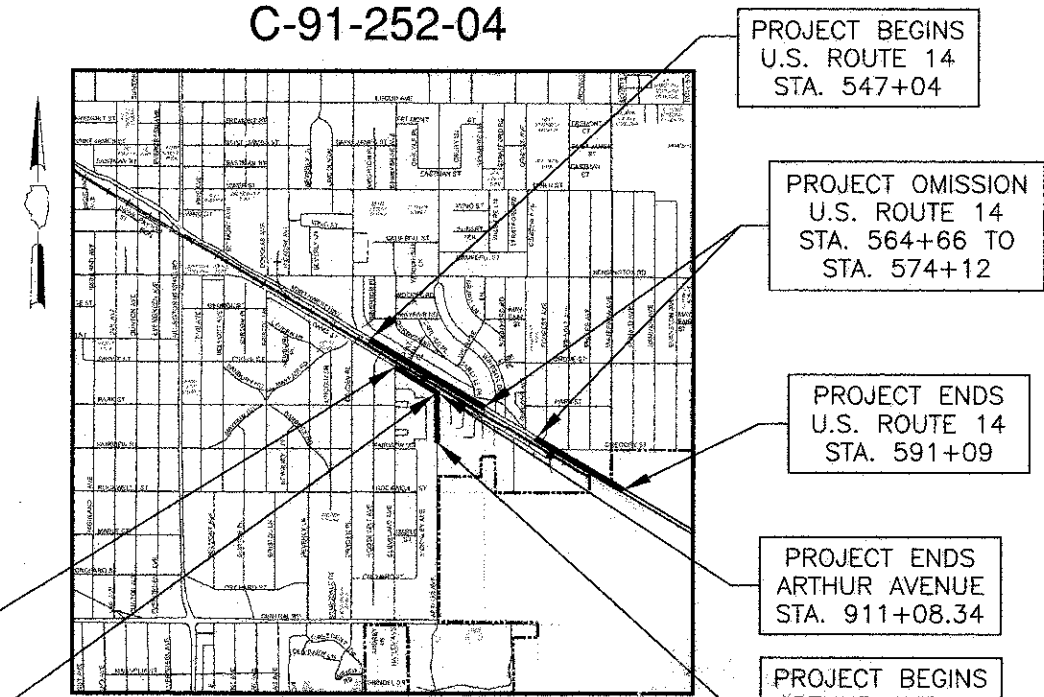
F.A.U. RTE.	SECTION	COUNTY	TOTAL SHEETS	SHEET NO.
3512	02-00177-00-WR	COOK	142	1
FED. ROAD DISTRICT		ILLINOIS	FED. AID PROJECT	
CONTRACT NUMBER 63514				



**INDEX OF SHEETS**

SHEET NO.	DESCRIPTION
1	COVER SHEET
2	GENERAL NOTES
3-8	SUMMARY OF QUANTITIES
9-10	TYPICAL SECTIONS
11-16	SCHEDULES OF QUANTITIES
17	ALIGNMENT, TIES AND BENCHMARKS
18-29	PLAN AND PROFILE SHEETS
30-36	SUGGESTED STAGES OF CONSTRUCTION AND TRAFFIC CONTROL
37	DETOUR PLAN
38-39	EROSION AND SEDIMENT CONTROL
40-51	DRAINAGE AND UTILITIES SHEETS
52-58	RIGHT OF WAY PLANS
59-60	INTERSECTION GRADING PLAN
61-62	PAVEMENT MARKING, SIGNING & LANDSCAPING PLAN
63-68	LANDSCAPING PLANS
69-78	TRAFFIC SIGNALS
79-84	TS-05 DISTRICT ONE STANDARD TRAFFIC SIGNAL DESIGN DETAILS
85-108	LIGHTING RELOCATION
109	CONSTRUCTION DETAILS
110	BD-01 DRIVEWAY DETAILS: DISTANCE BETWEEN R.O.W. AND FACE OF CURB/EDGE OF SHOULDER ≥ 15' (4.5m)
111	BD-02 DRIVEWAY DETAILS: DISTANCE BETWEEN R.O.W. AND FACE OF CURB/EDGE OF SHOULDER ≤ 15' (4.5m)
112	BD-03 OUTLET FOR CONCRETE CURB AND GUTTER
113	BD-07 DETAIL OF STORM SEWER CONNECTION TO EXISTING SEWER
114	BD-08 DETAILS FOR FRAMES AND LIDS ADJUSTMENT WITH MILLING
115	BD-22 PAVEMENT PATCHING FOR HMA SURFACED PAVEMENT
116	BD-32 BUTT JOINT AND HMA TAPER DETAILS
117	TC-11 TYPICAL APPLICATIONS RAISED REFLECTIVE PAVEMENT MARKERS (SNOW-PLOW RESISTANT)
118	TC-13 DISTRICT ONE TYPICAL PAVEMENT MARKINGS
119	TC-16 PAVEMENT MARKING LETTERS AND SYMBOLS FOR TRAFFIC STAGING
120	TC-18 SIGNING FOR FLAGGING OPERATIONS AT WORK ZONE OPENING
121	TC-22 ARTERIAL ROAD INFORMATION SIGNING
122	TS-02 DISTRICT ONE MAST ARM MOUNTED STREET NAME SIGNS
123-142	CROSS SECTIONS

FOR LIST OF STANDARDS, SEE SHEET NO. 3



PROJECT BEGINS  
DAVIS STREET  
STA. 13+52

PROJECT ENDS  
DAVIS STREET  
STA. 22+17

PROJECT BEGINS  
U.S. ROUTE 14  
STA. 547+04

PROJECT OMISSION  
U.S. ROUTE 14  
STA. 564+66 TO  
STA. 574+12

PROJECT ENDS  
U.S. ROUTE 14  
STA. 591+09

PROJECT ENDS  
ARTHUR AVENUE  
STA. 911+08.34

PROJECT BEGINS  
ARTHUR AVENUE  
STA. 904+75

LOCATION MAP (NOT TO SCALE)

SECTIONS 32 & 33, TOWNSHIP 42 NORTH, RANGE 11 EAST, 3rd PM  
U.S. ROUTE 14 (NORTHWEST HIGHWAY) PROJECT LENGTH = 3,459 FT. = 0.655 MI.  
DAVIS STREET PROJECT LENGTH = 865 FT. = 0.164 MI.  
ARTHUR AVENUE PROJECT LENGTH = 633.34 FT. = 0.120 MI.  
NET & GROSS PROJECT LENGTH = 4,957.34 FT. = 0.939 MI.

**DESIGN DESIGNATION:**

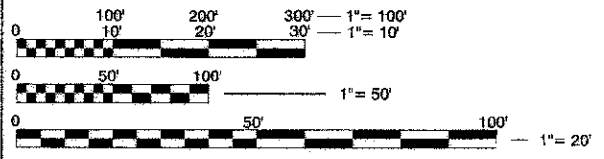
- U.S. ROUTE 14 (NORTHWEST HIGHWAY) = 1810 (09)
- OTHER MINOR ARTERIAL TWS-4 ● 4.27 (AC-20)
- DAVIS STREET = 665 (09) ● URBAN COLLECTOR TWS-2 ● 4.10 (AC-20)
- ARTHUR AVENUE = 535 (09) ● URBAN COLLECTOR TWS-2 ● 4.30 (AC-20)

**ADT'S(2009):**

- U.S. ROUTE 14 (NORTHWEST HIGHWAY) = 20,400 VPD
- DAVIS STREET = 6,300 VPD
- ARTHUR AVENUE = 9,700 VPD

**DESIGN SPEED**

- U.S. ROUTE 14 (NORTHWEST HIGHWAY) = 45 MPH (POSTED SPEED = 40 MPH)
- DAVIS STREET = 30 MPH (POSTED SPEED = 30 MPH)
- ARTHUR AVENUE = 35 MPH (POSTED SPEED = 30 MPH)



FULL SIZE PLANS HAVE BEEN PREPARED USING STANDARD ENGINEERING SCALES. REDUCED SIZED PLANS WILL NOT CONFORM TO STANDARD SCALES. IN MAKING MEASUREMENTS ON REDUCED PLANS, THE ABOVE SCALES MAY BE USED.

**J.U.L.I.E.**  
JOINT UTILITY LOCATION INFORMATION FOR EXCAVATION  
1-800-892-0123  
OR 811

THE "STANDARD SPECIFICATIONS FOR ROAD AND BRIDGE CONSTRUCTION", ADOPTED JANUARY 1, 2007 BY THE ILLINOIS DEPARTMENT OF TRANSPORTATION, SHALL GOVERN THIS WORK.

IMPROVEMENT LOCATED IN THE  
VILLAGE OF ARLINGTON HEIGHTS

STATE OF ILLINOIS  
DEPARTMENT OF TRANSPORTATION  
DIVISION OF HIGHWAYS

Approved: *[Signature]* 10/22/2012  
Michael L. Pappas, P.E.  
Village of Arlington Heights, Deputy Director of Engineering

Passed: *[Signature]* November 9, 2012  
District One Engineer of Local Roads & Streets

Releasing for Bid Based on Limited Review: November 14, 2014  
John Fontana, P.E.  
Deputy Director of Highways, Region One Engineer

P.E. SIGNATURE: *[Signature]*  
P.E. NAME: JOSEPH J. EMRY  
DATE: 10/22/2012  
IL LICENSE NO.: 062-057496  
LICENSE EXPIRATION: 11/30/2013  
SHEETS: 69-84 TRAFFIC SIGNALS

P.E. SIGNATURE: *[Signature]*  
P.E. NAME: DAVID E. MERTZ  
DATE: 10/22/2012  
IL LICENSE NO.: 062-052068  
LICENSE EXPIRATION: 11/30/2013  
SHEETS: 85-108 LIGHTING RELOCATION

P.E. SIGNATURE: *[Signature]*  
P.E. NAME: REID T. MAGNER  
DATE: 10/22/2012  
IL LICENSE NO.: 062-056273  
LICENSE EXPIRATION: 11/30/2013  
SHEETS: 1-68 AND 109-142

PLANS PREPARED BY:  
**CIVILTECH**  
450 E. Devon Ave., Suite 300 - Itasca, Illinois 60143  
Tel: 630.773.3900 - Fax: 630.773.3975  
www.civiltechinc.com

CONSULTANT ENGINEER: REID T. MAGNER, P.E. CIVILTECH ENGINEERING, INC.  
PROGRAM AND OFFICE ENGINEER: CHARLES F. RIDDLE, P.E. 847.705.4406, SCHAUMBURG, IL

**CONTRACT NO. 63514**