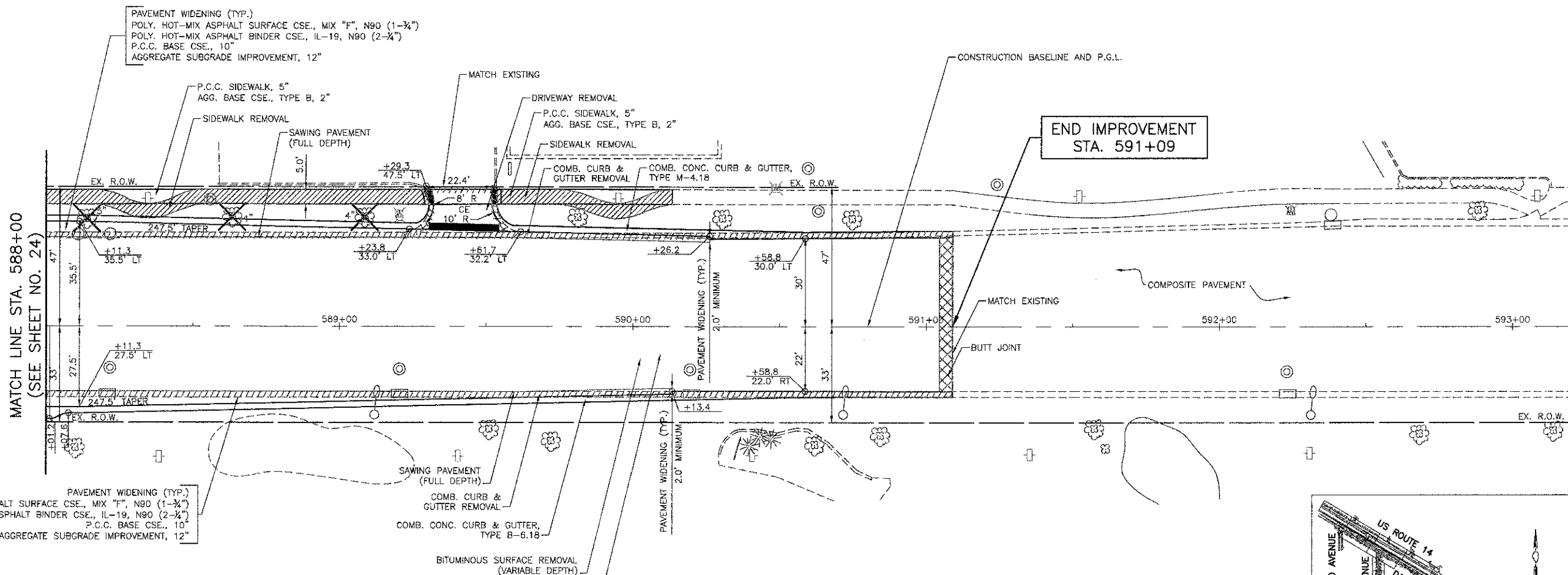


DATE	
BY	
PLAN	
NO.	
DATE	
BY	
PROFILE	
NO.	

DATE	
BY	
PROFILE	
NO.	
DATE	
BY	
PLAN	
NO.	



PAVEMENT WIDENING (TYP.)
 POLY. HOT-MIX ASPHALT SURFACE CSE., MIX "F", N90 (1-3/4")
 POLY. HOT-MIX ASPHALT BINDER CSE., IL-19, N90 (2-3/4")
 P.C.C. BASE CSE., 10"
 AGGREGATE SUBGRADE IMPROVEMENT, 12"

P.C.C. SIDEWALK, 5"
 AGG. BASE CSE., TYPE B, 2"

DRIVEWAY REMOVAL

P.C.C. SIDEWALK, 5"
 AGG. BASE CSE., TYPE B, 2"

COMB. CURB & GUTTER REMOVAL

COMB. CONC. CURB & GUTTER, TYPE M-4.18

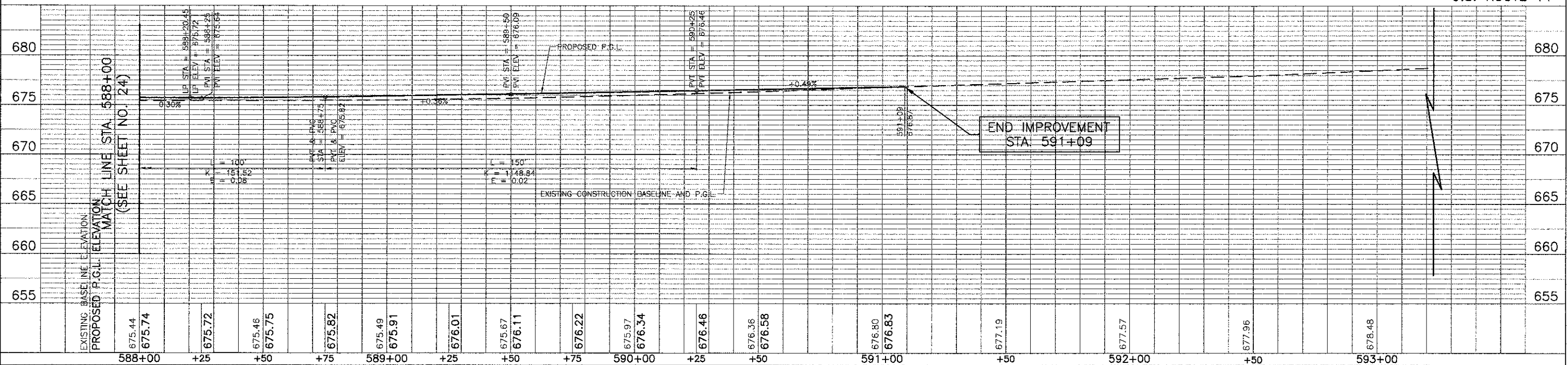
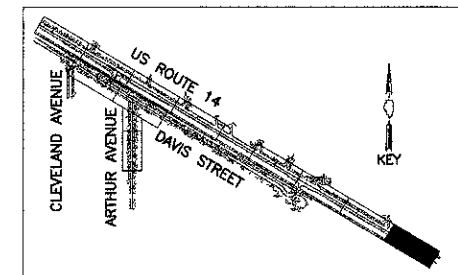
PAVEMENT WIDENING (TYP.)
 2.0' MINIMUM

PAVEMENT WIDENING (TYP.)
 2.0' MINIMUM

BITUMINOUS SURFACE REMOVAL (VARIABLE DEPTH)

POLY. HOT-MIX ASPHALT SURFACE CSE., MIX "F", N90 (1-3/4")
 POLY. HOT-MIX ASPHALT BINDER CSE., IL-19, N90 (2-3/4")
 LEVELING BINDER, (MACHINE METHOD), N70, VARIABLE DEPTH

NOTES:
 1. CURB AND GUTTER TRANSITION FROM TYPE M-4.18 TO EXISTING TYPE WILL BE PAID FOR AS "COMBINATION CONCRETE CURB AND GUTTER TYPE M-4.18."



	USER NAME = #USER# DESIGNED - RTM DRAWN - JRR CHECKED - RTM DATE - 10/22/12	REVISED - REVISED - REVISED - REVISED -	STATE OF ILLINOIS DEPARTMENT OF TRANSPORTATION	VERT. 0 5 10 HORIZ. 0 20 40 SCALE IN FEET	PLAN AND PROFILE - U.S. ROUTE 14 EAST SHEET NO. 8 OF 12 SHEETS STA. 588+00 TO STA. 591+09	F.A.U. RT# 3512 SECTION 02-00177-00 WR COUNTY COOK TOTAL SHEETS 142 SHEET NO. 25	PROJECT NO. M-8003(426) CONTRACT NO. 63514 ILLINOIS FED. AID PROJECT
--	---	--	---	---	---	--	--