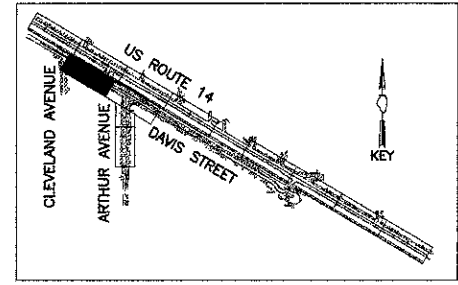
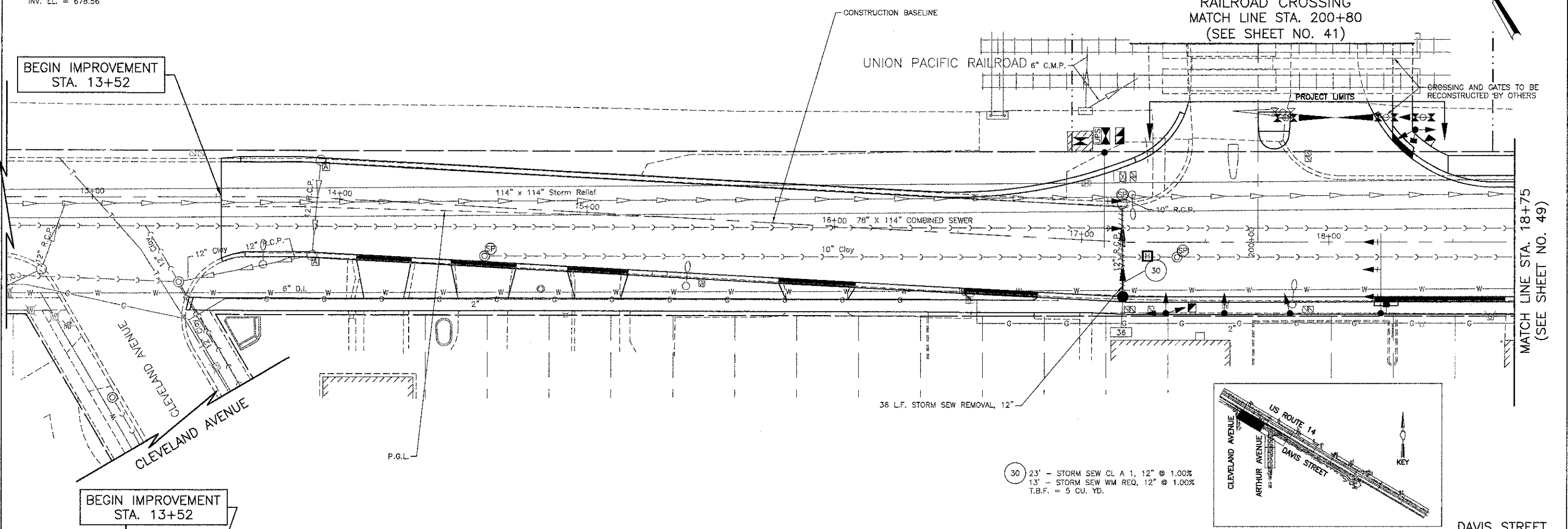


36 STA. 17+16.5, 22.0' RT.  
 CB TA 4 DIA T23F&G  
 RIM EL. = 682.43  
 INV. EL. = 678.56

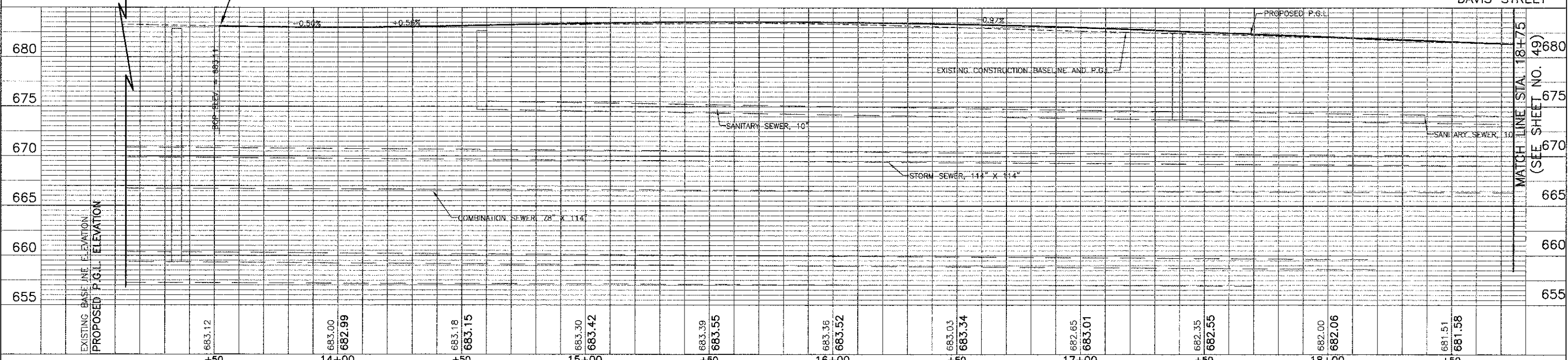
RAILROAD CROSSING  
 MATCH LINE STA. 200+80  
 (SEE SHEET NO. 41)

BEGIN IMPROVEMENT  
 STA. 13+52



30 23' - STORM SEW CL A 1, 12" @ 1.00%  
 13' - STORM SEW WM REQ, 12" @ 1.00%  
 T.B.F. = 5 CU. YD.

BEGIN IMPROVEMENT  
 STA. 13+52



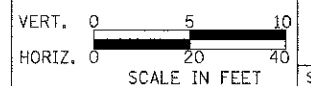
DATE	
BY	
REVIEWED	
PLOTTED	
NOTE BOOK	
NO.	

DATE	
BY	
REVIEWED	
PLOTTED	
NOTE BOOK	
NO.	



USER NAME = #USER#	DESIGNED - RTM	REVISED -
PLOT SCALE = #SCALE#	DRAWN - JRR	REVISED -
PLOT DATE = #DATE#	CHECKED - RTM	REVISED -
	DATE - 10/22/12	REVISED -

STATE OF ILLINOIS  
 DEPARTMENT OF TRANSPORTATION



DRAINAGE AND UTILITIES - DAVIS STREET

F.A.U. RTE.	SECTION	COUNTY	TOTAL SHEETS	SHEET NO.
3512	02-00:77-00 WR	COOK	142	48
PROJECT NO. M-8003(426)		CONTRACT NO. 63514		
FED. ROAD DIST. NO. 1 ILLINOIS FED. AID PROJECT				

SHEET NO. 9 OF 12 SHEETS STA. 13+52 TO STA. 18+75