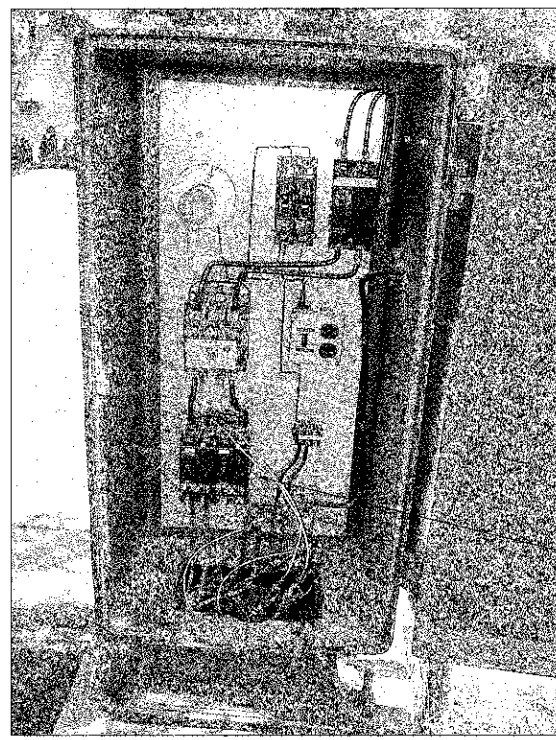


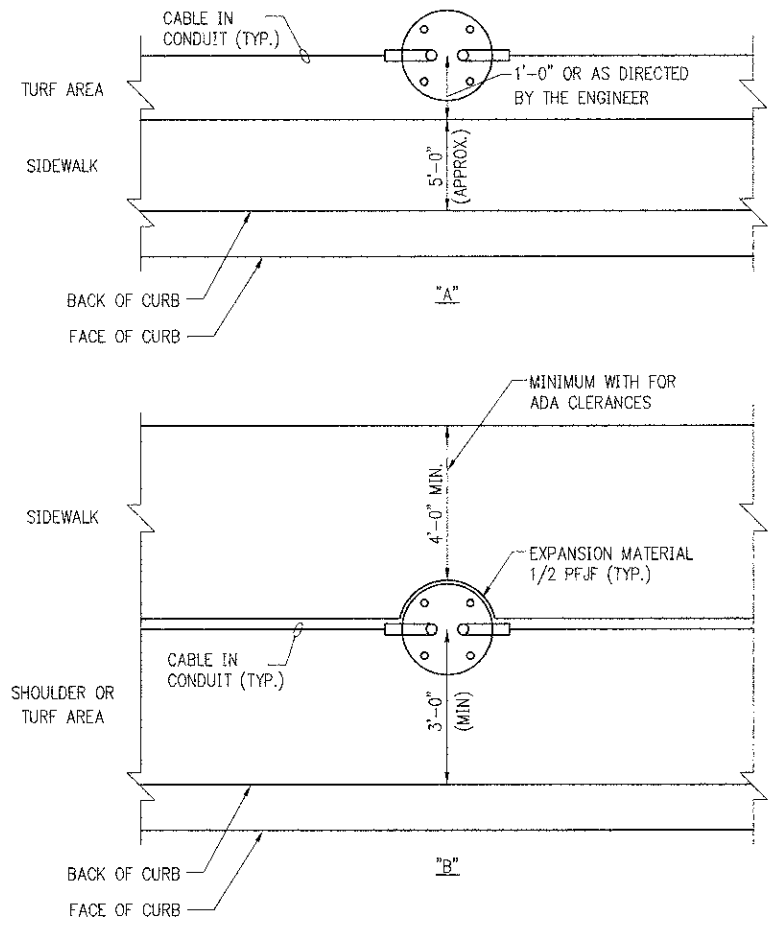
1 TYPICAL CONDUIT TRENCH DETAIL
NOT TO SCALE

- NOTES:**
- CONDUIT INSTALLED IN TRENCHES SHALL BE COVERED WITH A MINIMUM OF 6" OF COMPACTED FA-6 OR LIMESTONE SCREENINGS.
 - IN GRASSY AREAS, THE BACKFILL MAY BE COMPACTED EARTH.
 - TRENCHES WITHIN 2' OF PROPOSED OR EXISTING STREETS, DRIVEWAYS, OR SIDEWALKS SHALL BE BACKFILLED WITH COMPACTED FA-6 SAND OR LIMESTONE SCREENINGS.
 - WHERE 2 OR MORE CONDUITS RUN ADJACENT TO EACH OTHER, THEY SHALL BE PLACED IN A COMMON TRENCH SO AS NOT TO CROSS EACH OTHER.
 - 6" WIDE REINFORCED METALLIC WARNING TAPE, RED WITH BLACK LETTERING TO READ "CAUTION-ELECTRICAL LINE BURIED BELOW". WARNING TAPE TO BE PLACED 1' MINIMUM TO 2' MAXIMUM BELOW FINISHED GRADE.
 - ALL GRASSY AREAS DISTURBED DURING CONSTRUCTION SHALL BE RESTORED WITH 4" OF TOPSOIL AND SOD.
 - EXACT DISTANCE SHALL BE FIELD COORDINATED.



2 EXISTING 120/240V LIGHTING CONTROL CABINET "D3" FRONT VIEW
NOT TO SCALE

- NOTES:**
- EXISTING LIGHT CONTROL CABINET TO REMAIN AND SHALL BE REUSED FOR TEMPORARY LIGHTING.
 - EXISTING POWER SERVICE TO REMAIN FOR THE DURATION OF THE TEMPORARY LIGHTING. COORDINATE WITH UTILITY COMPANY AND VILLAGE OF ARLINGTON HEIGHTS FOR CONSTRUCTION PHASING.
 - PROVIDE ADDITIONAL TWO (2) NEW 20A-2P CIRCUIT BREAKERS AND INSTALL IN EXISTING LIGHTING CONTROL CABINET. MATCH WITH EXISTING CIRCUIT BREAKERS IN CABINET. EACH CIRCUIT BREAKER SHALL BE DEDICATED FOR TEMP CIRCUITS "A, B, C, AND D".
 - PROVIDE TEMPORARY PHOTOCELL AND WIRING. EXACT LOCATION SHALL BE VERIFIED AND APPROVED BY ENGINEER.
 - EXISTING LIGHTING CONTROL CABINET AND FOUNDATION SHALL BE REMOVED AFTER THE NEW LIGHTING SYSTEM IS COMPLETE AND ACCEPTED BY THE VILLAGE OF ARLINGTON HEIGHTS. PROVIDE BACKFILL FOR FOUNDATION, MATCH WITH EXISTING GRADE.

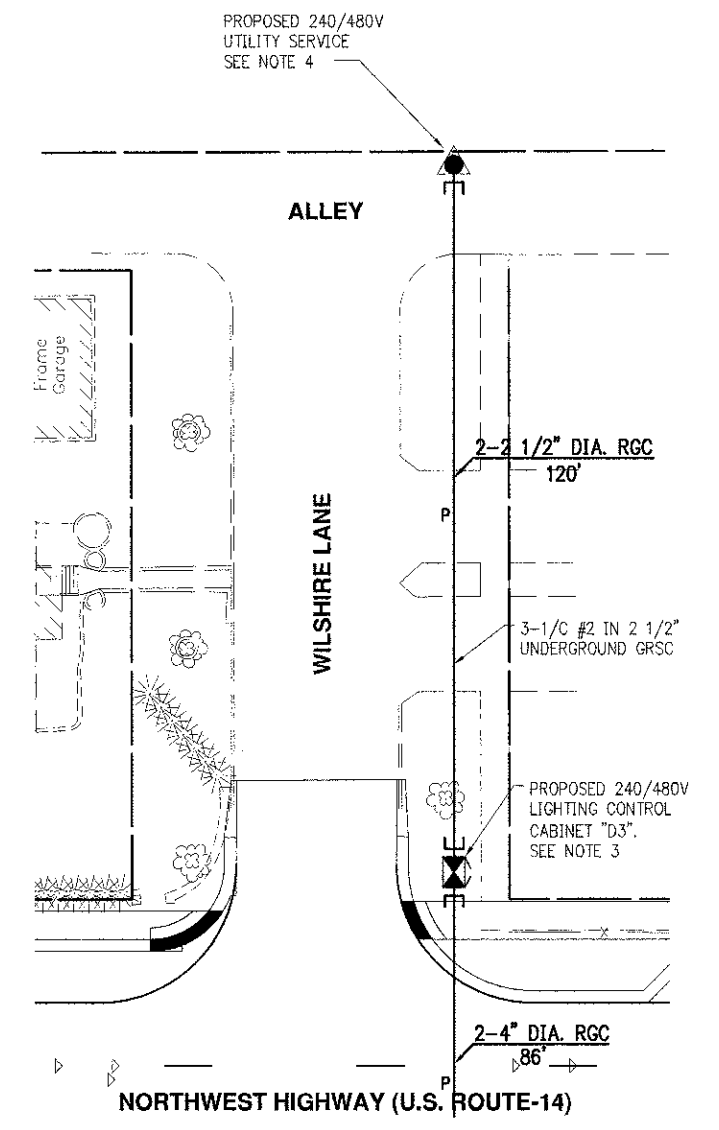


3 TYPICAL CONDUIT INSTALLATION PLAN VIEWS
NOT TO SCALE

- NOTES:**
- CONDUIT SHALL BE INSTALLED MIN. 2'-0" FROM PAVEMENT EDGE.
 - WHEN LOCATION OF A POLE FOUNDATION FALLS COMPLETELY WITHIN THE EXISTING SIDEWALK, CONTRACTOR SHALL CONSTRUCT THE FOUNDATION AT THE SIDE OF SIDEWALK AWAY FROM THE ROAD (DETAIL "A"). WHEN PARTIAL OVERLAP OCCURS, CONTRACTOR SHALL CONSTRUCT THE POLE FOUNDATION AS SHOWN ON DETAIL "B".
 - LOCATIONS SHOWN IN DETAILS ARE APPROXIMATE AND SHALL BE FIELD COORDINATED DURING CONSTRUCTION.

- NOTES:**
- ELECTRICAL SERVICE SHALL BE 240/480V, 1-PH, 3-WIRE. SERVICE SHALL BE COORDINATED AND APPROVED BY THE UTILITY COMPANY AND VILLAGE OF ARLINGTON HEIGHTS.
 - ONE OF 2-2 1/2" RGC SHALL BE SPARE AND CAPPED OFF AT GRADE BY UTILITY POLE AND LIGHTING CONTROLLER FOUNDATION.
 - SEE LIGHTING CONTROL CABINET DETAILS ON DRAWING E23.
 - SEE ELECTRIC SERVICE INSTALLATION DETAILS ON DRAWING E24.

4 PROPOSED LIGHTING CONTROL CABINET SERVICE
NOT TO SCALE



REVISIONS	
NAME	DATE