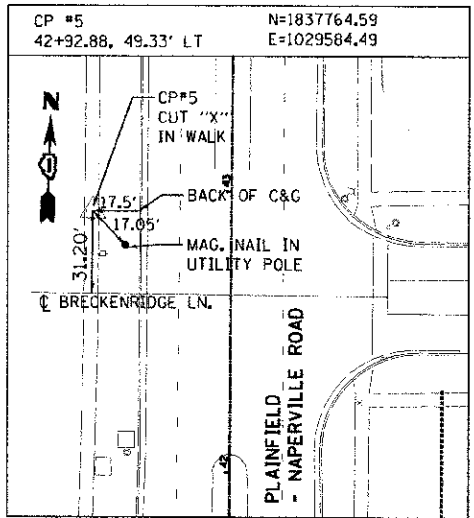
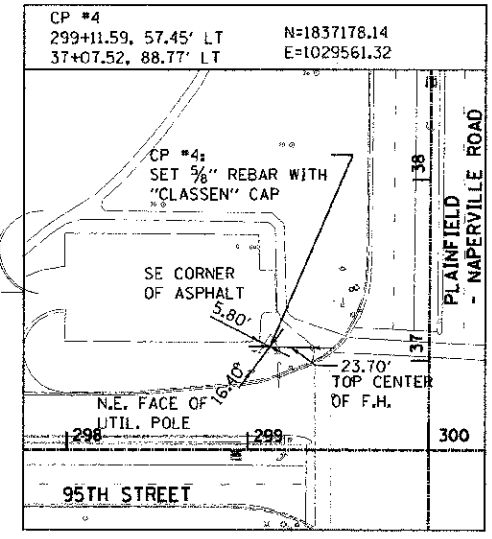


PROJECT BENCHMARK ELEVATIONS
DATUM: N.G.V.D. OF 1929

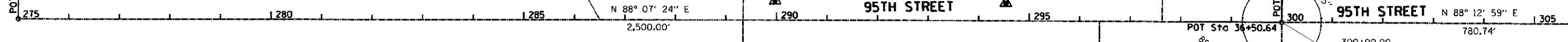
NO.	STATION OFFSET	COORDINATES	DESCRIPTION	ELEV.
6000	10+00.00 19.13' RT	N=1,829,757.51 E=1,029,881.52	CHISELED SO. CUT ON TOP OF SE WINGWALL ON NAPERVILLE-PLAINFIELD RD. BRIDGE OVER THE DUPAGE RIVER (APPROX 450-FEET N. OF BOUGHTON RD.)	630.78
BM 11	363+79.51 0.95' RT	N=1,833,658.46 E=1,034,569.03	SO. CUT ON HEADWALL @ CENTERLINE OF 95TH EXTENTION ON SOUTH SIDE OF DUPAGE RIVER	632.67
BM 18	381+23.46 51.45' LT	N=1,832,138.39 E=1,035,334.96	X-CUT ON CONC. BASE COMBINATION MAST ARM ON NE. CORNER BOUGHTON RD. AND 95TH ST. EXTENSION	653.61
BM 20	324+49.39 756.22' LT	N=1,837,177.84 E=1,032,462.63	MINI RR. SPIKE IN N. FACE PP. ON S. SIDE 95TH ST. @ HOUSE 27 W 355 KNOCH KNOLL RD. (LOCATED APPROXIMATELY 950-FEET EAST OF 95TH ST)	664.86
BM 24	30+17.26 49.82' RT	N=1,836,491.92 E=1,029,719.48	MINI RR. SPIKE IN W. FACE OF 4TH POWER POLE SOUTH OF 95TH ST. ON E. SIDE NAPERVILLE-PLAINFIELD RD.	643.59
BM 25	28+24.25 50.13' RT	N=1,836,298.99 E=1,029,725.32	SO. CUT ON S. END HEADWALL ON E. SIDE NAPERVILLE-PLAINFIELD RD. @ SPRING CREEK	642.68
BM 26	294+53.69 35.19' LT	N=1,837,140.90 E=1,029,104.39	SO. CUT ON W. CORNER WINGWALL ON N. SIDE 95TH ST. @ BRIDGE OVER SPRING CREEK	649.16
BM 27	289+97.19 38.60' LT	N=1,837,129.36 E=1,028,648.02	SO. CUT CONC. BASE LT. POLE ON N. SIDE 95TH ST. OPPOSITE GATESHEAD DR.	662.90
OSBM 1	325+29.91 41.29' LT	N=1,836,581.32 E=1,032,057.54	NORTHERLY TAGGED BOLT OF FIRE HYDRANT ON NORTHERLY SIDE OF 95TH ST. EXTENSION 500'± EASTERLY OF KNOCH KNOLL RD.	658.13
OSBM 2	372+57.95 59.20' LT	N=1,832,963.55 E=1,035,123.11	"X" CUT ON NORTH BOLT OF FIRE HYDRANT @ SOUTH EAST CORNER OF ALAN DEATHRAGE DR. AND KINGS RD.	646.05

VERTICAL CONTROL DATUM IS NGVD 29 AND BENCHMARKS APPLY TO THIS PLAN SET ONLY.

NOTE: ALL BEARINGS, DISTANCES, AND COORDINATES SHOWN ARE BASED ON ILLINOIS STATE PLANE COORDINATE SYSTEM, EAST ZONE, NAD83 (2007). COORDINATES SHOWN ARE GRID VALUES AND CAN BE CONVERTED TO GROUND VALUES BY DIVIDING BY THE SCALE FACTOR OF 0.9999776.



POT Sta. 275+00.00

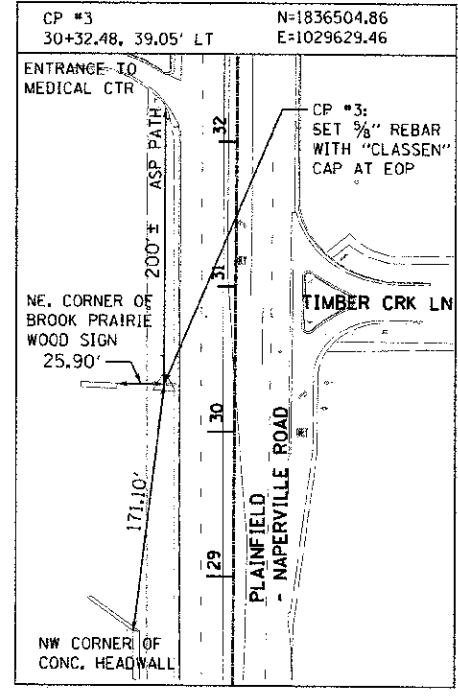


CONSTRUCTION LAYOUT: 95TH STREET

STATION	NORTHING	EASTING
290+00.00	1,837,090.87	1,028,652.10
291+00.00	1,837,094.14	1,028,752.04
292+00.00	1,837,097.42	1,028,851.99
293+00.00	1,837,100.69	1,028,951.94
294+00.00	1,837,103.97	1,029,051.88
295+00.00	1,837,107.24	1,029,151.83
296+00.00	1,837,110.52	1,029,251.78
297+00.00	1,837,113.79	1,029,351.72
298+00.00	1,837,117.07	1,029,451.67
299+00.00	1,837,120.34	1,029,551.62
300+00.00	1,837,123.62	1,029,651.56
301+00.00	1,837,126.73	1,029,751.51
302+00.00	1,837,129.84	1,029,851.46
303+00.00	1,837,132.95	1,029,951.42
304+00.00	1,837,136.07	1,030,051.37
305+00.00	1,837,139.18	1,030,151.32

CONSTRUCTION LAYOUT: PLAINFIELD - NAPERVILLE ROAD

STATION	NORTHING	EASTING
26+00.00	1,836,073.40	1,029,681.62
27+00.00	1,836,173.36	1,029,678.76
28+00.00	1,836,273.32	1,029,675.90
29+00.00	1,836,373.28	1,029,673.03
30+00.00	1,836,473.24	1,029,670.17
31+00.00	1,836,573.20	1,029,667.31
32+00.00	1,836,673.16	1,029,664.45
33+00.00	1,836,773.12	1,029,661.59
34+00.00	1,836,873.07	1,029,658.73
35+00.00	1,836,973.03	1,029,655.87
36+00.00	1,837,072.99	1,029,653.01
37+00.00	1,837,172.95	1,029,650.26
38+00.00	1,837,272.92	1,029,647.62
39+00.00	1,837,372.89	1,029,644.99
40+00.00	1,837,472.85	1,029,642.35
41+00.00	1,837,572.82	1,029,639.72
42+00.00	1,837,672.78	1,029,637.08
43+00.00	1,837,772.75	1,029,634.45
44+00.00	1,837,872.71	1,029,631.81
45+00.00	1,837,972.68	1,029,629.18
46+00.00	1,838,072.64	1,029,626.54
47+00.00	1,838,172.61	1,029,623.91
48+00.00	1,838,272.57	1,029,621.27
49+00.00	1,838,372.54	1,029,618.64
50+00.00	1,838,472.50	1,029,616.00



FILE NAME: q:\vnc\dm\100 S Wacker Dr. Suite 500 Chicago, IL 60606 TEL: (312) 939-4980 FAX: (312) 939-4988

	100 S. WACKER DR. SUITE 500 CHICAGO, IL 60606 TEL: (312) 939-4980 FAX: (312) 939-4988	UCLER NAME: J. J. J. J. DESIGNED: JRP DRAWN: MRF CHECKED: JRP DATE: 10/19/2012	REVISED: - REVISED: - REVISED: - REVISED: -	STATE OF ILLINOIS DEPARTMENT OF TRANSPORTATION	95TH STREET ALIGNMENT, TIES, AND BENCHMARKS	F.A.U. RTE. 1644 SECTION 01-00181-00-FP COUNTY WILL TOTAL SHEETS 328 SHEET NO. 22 CONTRACT NO. 63647 ILLINOIS FED. AID PROJECT
	SCALE: 1" = 100' DRAWING NO. 1 OF 5 STA. TO STA.					