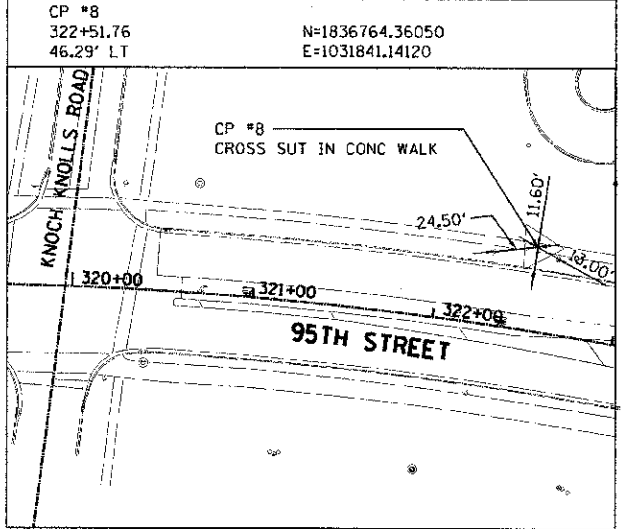
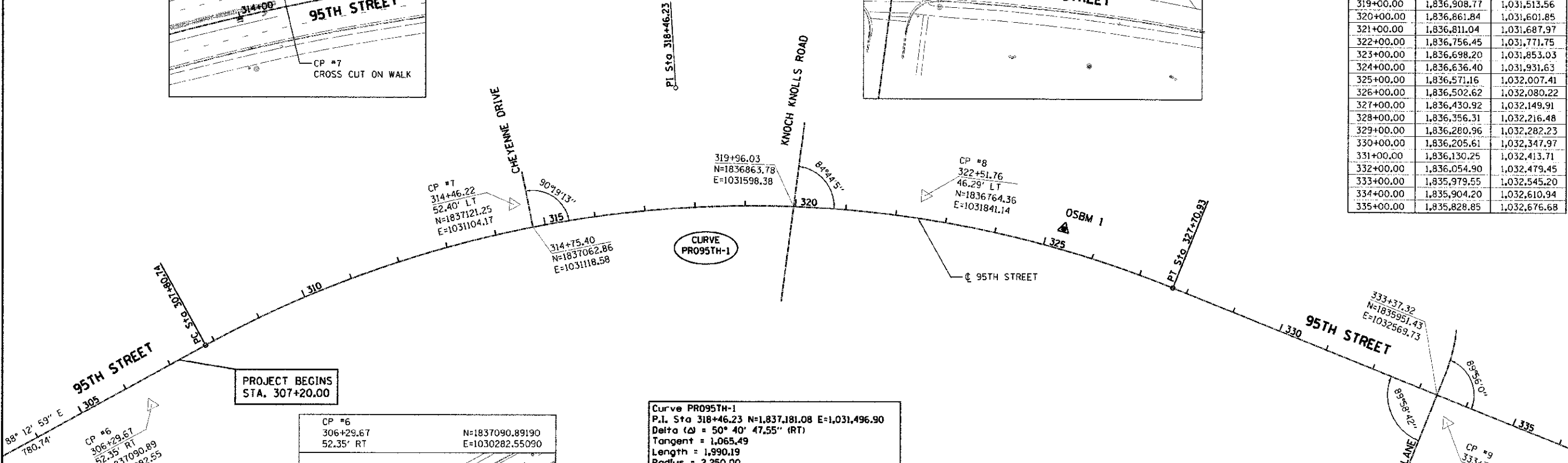
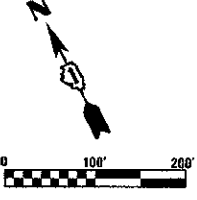


VERTICAL CONTROL DATUM IS NGVD 29
AND BENCHMARKS APPLY TO
THIS PLAN SET ONLY.

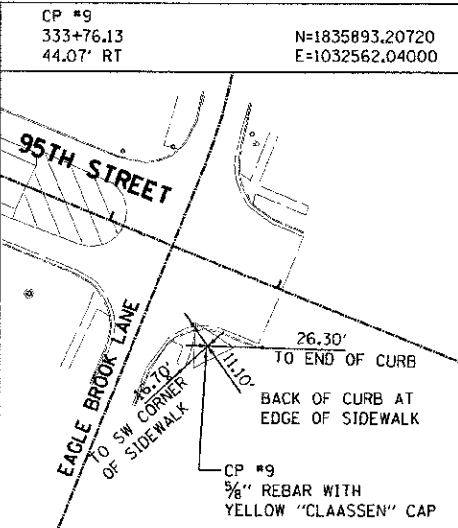
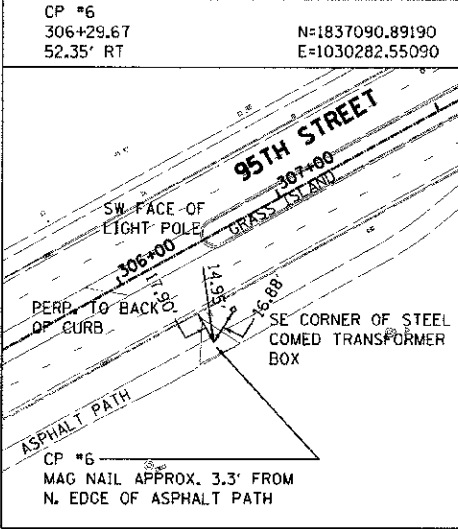


CONSTRUCTION LAYOUT: 95TH STREET		
STATION	NORTHING	EASTING
306+00.00	1,837,142.29	1,030,251.27
307+00.00	1,837,145.40	1,030,351.22
308+00.00	1,837,148.43	1,030,451.18
309+00.00	1,837,148.47	1,030,551.17
310+00.00	1,837,144.06	1,030,651.06
311+00.00	1,837,135.22	1,030,750.66
312+00.00	1,837,121.96	1,030,849.77
313+00.00	1,837,104.31	1,030,948.19
314+00.00	1,837,082.31	1,031,045.73
315+00.00	1,837,055.99	1,031,142.20
316+00.00	1,837,025.42	1,031,237.40
317+00.00	1,836,990.64	1,031,331.15
318+00.00	1,836,951.73	1,031,423.26
319+00.00	1,836,908.77	1,031,513.56
320+00.00	1,836,861.84	1,031,601.85
321+00.00	1,836,811.04	1,031,687.97
322+00.00	1,836,756.45	1,031,771.75
323+00.00	1,836,698.20	1,031,853.03
324+00.00	1,836,636.40	1,031,931.63
325+00.00	1,836,571.16	1,032,007.41
326+00.00	1,836,502.62	1,032,080.22
327+00.00	1,836,430.92	1,032,149.91
328+00.00	1,836,356.31	1,032,216.48
329+00.00	1,836,280.96	1,032,282.23
330+00.00	1,836,205.61	1,032,347.97
331+00.00	1,836,130.25	1,032,413.71
332+00.00	1,836,054.90	1,032,479.45
333+00.00	1,835,979.55	1,032,545.20
334+00.00	1,835,904.20	1,032,610.94
335+00.00	1,835,828.85	1,032,676.68



PROJECT BEGINS
STA. 307+20.00

Curve PRO95TH-1
P.L. Sta 318+46.23 N=1,837,181.08 E=1,031,496.90
Delta (Δ) = 50° 40' 47.55" (RT)
Tangent = 1,065.49
Length = 1,990.19
Radius = 2,250.00
External = 239.53
e = N.C.
P.C. Sta 307+80.74 N=1,837,147.92 E=1,030,431.92
P.T. Sta 327+70.93 N=1,836,378.21 E=1,032,197.38



NOTE: ALL BEARINGS, DISTANCES, AND COORDINATES SHOWN ARE BASED ON ILLINOIS STATE PLANE COORDINATE SYSTEM, EAST ZONE, NAD83 (2007). COORDINATES SHOWN ARE GRID VALUES AND CAN BE CONVERTED TO GROUND VALUES BY DIVIDING BY THE SCALE FACTOR OF 0.9999776.

URS
100 S. WACKER DR.
SUITE 500
CHICAGO IL 60606
TEL (312) 939-4000
FAX (312) 939-4998

USER NAME: jernan.pugh
DESIGNED: JRP
DRAWN: MRF
CHECKED: JRP
DATE: 10/19/2012

REVISIONS:
REVISION: -
REVISION: -
REVISION: -
REVISION: -

STATE OF ILLINOIS
DEPARTMENT OF TRANSPORTATION

95TH STREET
ALIGNMENT, TIES, AND BENCHMARKS
SCALE: 1" = 100'
DRAWING NO. 2 OF 5
STA. TO STA.

F.A.U. RTE. 1644	SECTION 01-00181-00-FP	COUNTY WILL	TOTAL SHEET NO. 23
			CONTRACT NO. 63647

FILE NAME: g:\wacker_26187981_95thstreetsigns\construction\p\view\dwg\el\95thstreetsigns.dwg