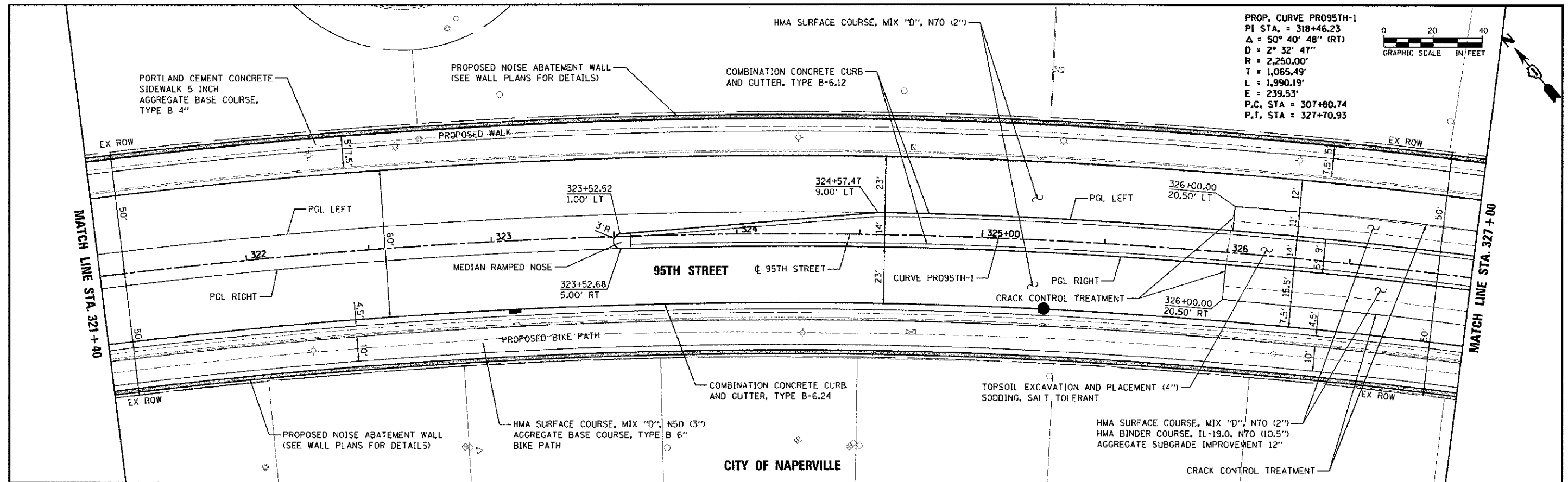
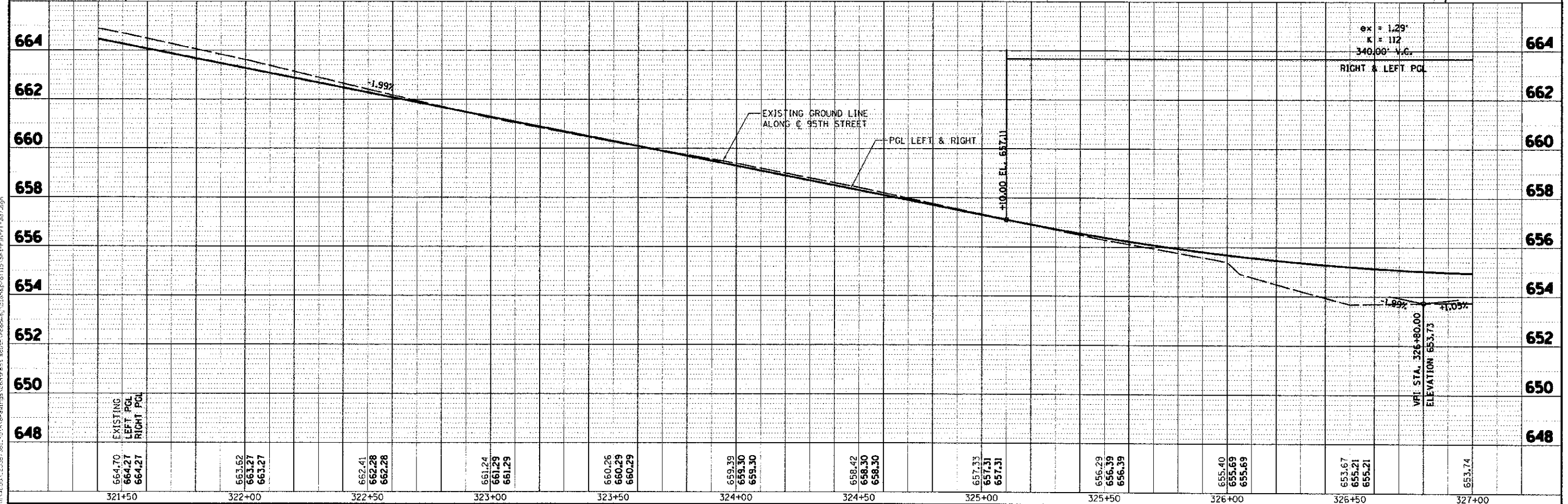
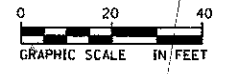


DESIGNED	JRP
DRAWN	KB
CHECKED	JRP
DATE	10/19/2012

PROF. FILE	63678
NOTE BOOK	63678
NO.	63678



PROP. CURVE PR095TH-1
 PI STA. = 318+46.23
 Δ = 50° 40' 48" (RT)
 D = 2° 32' 47"
 R = 2,250.00'
 T = 1,065.49'
 L = 1,990.19'
 E = 239.53'
 P.C. STA = 307+80.74
 P.T. STA = 327+70.93



664	662	660	658	656	654	652	650	648
664.70	664.27	664.27	663.62	663.27	663.27	662.41	662.28	662.28
661.24	661.29	661.29	660.26	660.29	660.29	659.39	659.30	659.30
658.42	658.30	658.30	657.33	657.31	657.31	656.29	656.39	656.39
655.40	655.69	655.69	653.67	653.21	653.21	653.74		

URS
 100 S. WACKER DR.
 SUITE 500
 CHICAGO, IL 60606
 TEL (312) 939-4000
 FAX (312) 939-4988

USER NAME: jrpoo.push
 PLOT SCALE: 1"=20'
 PLOT DATE: 10/19/2012

DESIGNED: JRP
 DRAWN: KB
 CHECKED: JRP
 DATE: 10/19/2012

REVISED: -
 REVISED: -
 REVISED: -
 REVISED: -

STATE OF ILLINOIS
 DEPARTMENT OF TRANSPORTATION
 SCALE: 1"=20' DRAWING NO. 4 OF 17 STA. 321+40 TO STA. 327+00

95TH STREET
 ROADWAY PLAN & PROFILE
 SECTION: 01-00181-00-PP
 COUNTY: WILL
 TOTAL SHEETS: 39
 SHEET NO.: 328
 CONTRACT NO.: 63647