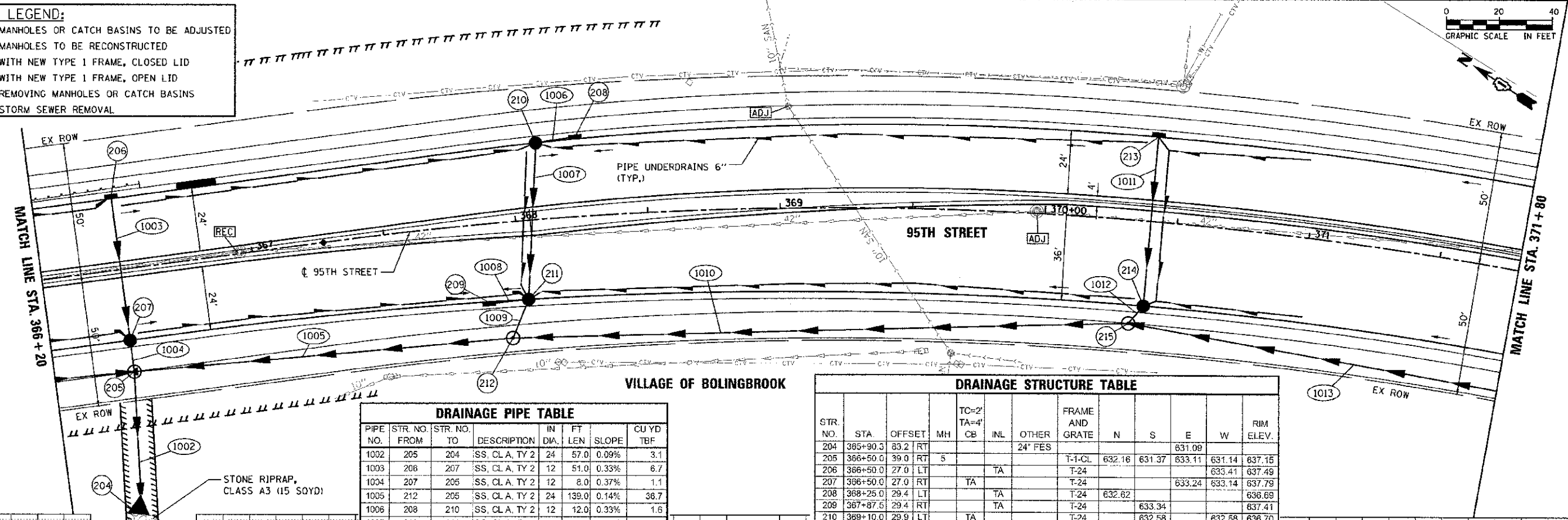
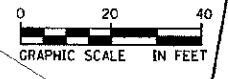


PLAN LEGEND:

- [ADJ] MANHOLES OR CATCH BASINS TO BE ADJUSTED
- [REC] MANHOLES TO BE RECONSTRUCTED
- * WITH NEW TYPE 1 FRAME, CLOSED LID
- ** WITH NEW TYPE 1 FRAME, OPEN LID
- [R] REMOVING MANHOLES OR CATCH BASINS
- STORM SEWER REMOVAL

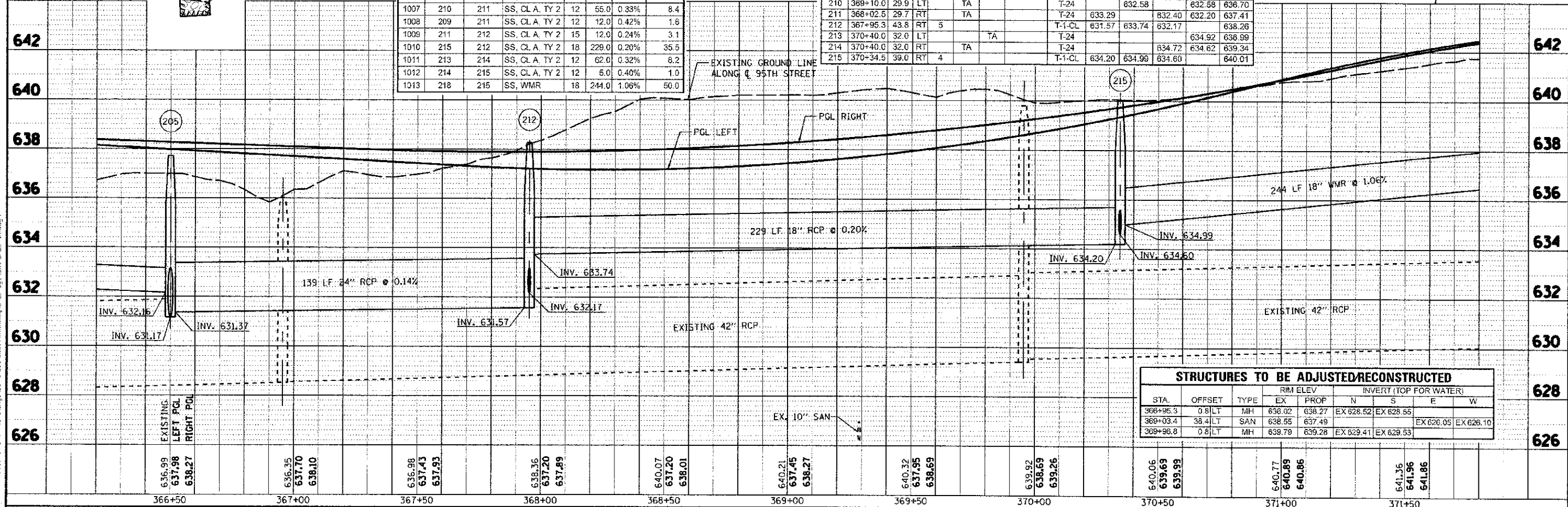


DRAINAGE PIPE TABLE

PIPE NO.	STR. NO. FROM	STR. NO. TO	DESCRIPTION	IN DIA.	FT LEN.	SLOPE	CU YD TBF
1002	205	204	SS, CL A, TY 2	24	57.0	0.09%	3.1
1003	206	207	SS, CL A, TY 2	12	51.0	0.33%	6.7
1004	207	205	SS, CL A, TY 2	12	8.0	0.37%	1.1
1005	212	205	SS, CL A, TY 2	24	139.0	0.14%	36.7
1006	208	210	SS, CL A, TY 2	12	12.0	0.33%	1.6
1007	210	211	SS, CL A, TY 2	12	55.0	0.33%	8.4
1008	209	211	SS, CL A, TY 2	12	12.0	0.42%	1.6
1009	211	212	SS, CL A, TY 2	15	12.0	0.24%	3.1
1010	215	212	SS, CL A, TY 2	18	229.0	0.20%	35.5
1011	213	214	SS, CL A, TY 2	12	62.0	0.32%	8.2
1012	214	215	SS, CL A, TY 2	12	5.0	0.40%	1.0
1013	218	215	SS, WMR	18	244.0	1.06%	50.0

DRAINAGE STRUCTURE TABLE

STR. NO.	STA.	OFFSET	MH	TC=2' TA=4' CB	INL	OTHER	FRAME AND GRATE	N	S	E	W	RIM ELEV.
204	365+90.3	83.2	RT			24" FES				631.09		637.15
205	366+50.0	39.0	RT	5			T-1-CL	632.16	631.37	633.11	633.14	637.49
206	366+50.0	27.0	LT		TA		T-24				633.41	637.79
207	366+50.0	27.0	RT		TA		T-24			633.24	633.14	637.41
208	368+25.0	29.4	LT		TA		T-24	632.62				636.69
209	367+87.6	29.4	RT		TA		T-24		633.34			637.41
210	369+10.0	29.9	LT		TA		T-24		632.58		632.58	636.70
211	368+02.5	29.7	RT		TA		T-24	633.29		632.40	632.20	637.41
212	367+95.3	43.8	RT	5			T-1-CL	631.57	633.74	632.17		638.26
213	370+40.0	32.0	LT		TA		T-24				634.92	638.99
214	370+40.0	32.0	RT		TA		T-24			634.72	634.62	639.34
215	370+34.5	39.0	RT	4			T-1-CL	634.20	634.99	634.60		640.01



STRUCTURES TO BE ADJUSTED/RECONSTRUCTED

STA.	OFFSET	TYPE	RIM ELEV		INVERT (TOP FOR WATER)				
			EX	PROP	N	S	E	W	
366+95.3	0.8	LT	MH	636.02	638.27	EX 628.52	EX 628.55		
369+03.4	38.4	LT	SAN	638.55	637.49			EX 626.05	EX 626.10
369+96.8	0.8	LT	MH	639.79	639.28	EX 629.41	EX 629.53		

SCALE: 1"=20'
 DATE: 10/19/2012
 DRAWN: KB
 CHECKED: JRP
 DESIGNED: JRP

PROJECT: 95TH STREET DRAINAGE
 SHEET NO.: 12 OF 18
 CONTRACT NO.: 63647