

DRAINAGE STRUCTURE TABLE

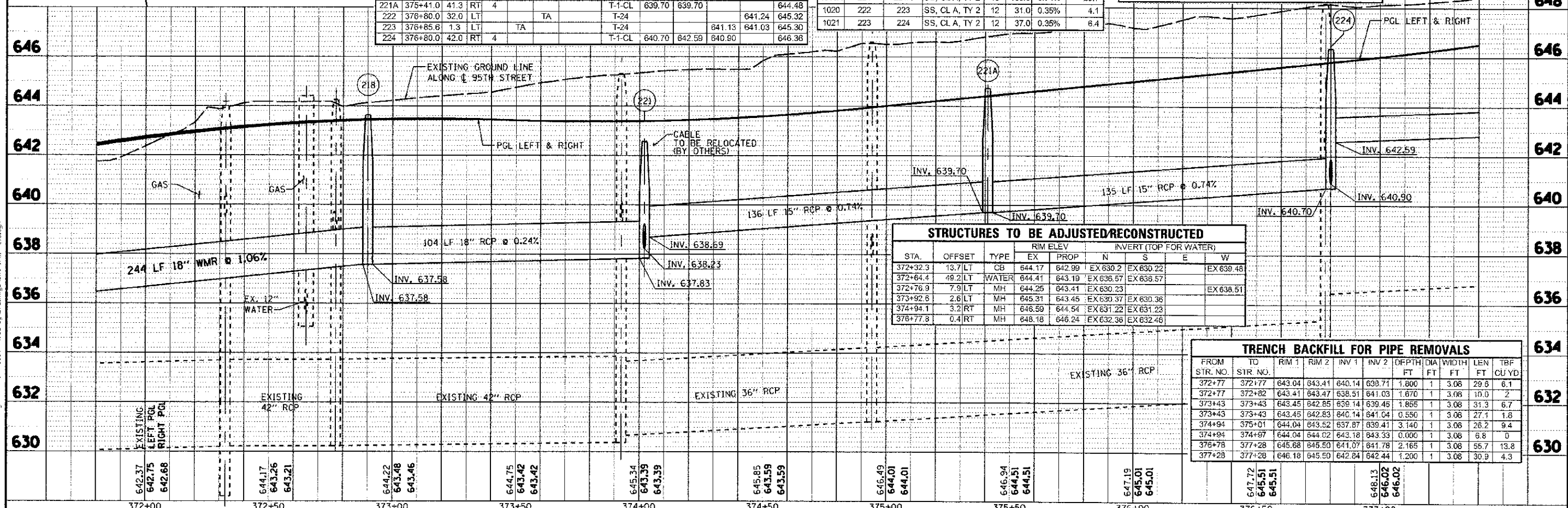
STR. NO.	STA.	OFFSET	MH	TC=2' TA=4' CB	INL	OTHER	FRAME AND GRATE	N	S	E	W	RIM ELEV.
218	372+90.0	42.1	RT	4			T-1-CL	637.58	637.58			643.63
219	374+02.0	32.0	LT		TA		T-24	638.75		638.55		642.88
219A	373+87.7	32.0	LT			TA	T-24		638.79			642.87
220	374+02.0	32.0	RT		TA		T-24	638.75		638.35	638.25	642.88
220A	373+87.7	32.0	RT			TA	T-24		638.79			642.87
221	374+02.0	41.3	RT	4			T-1-CL	637.83	638.89	638.23		642.56
221A	375+41.0	41.3	RT	4			T-1-CL	639.70	639.70			644.48
222	376+80.0	32.0	LT		TA		T-24			641.24		645.32
223	376+85.6	1.3	LT		TA		T-24			641.13	641.03	645.30
224	376+80.0	42.0	RT	4			T-1-CL	640.70	642.59	640.90		646.36

DRAINAGE PIPE TABLE

PIPE NO.	STR. NO. FROM	STR. NO. TO	DESCRIPTION	IN DIA.	FT LEN	SLOPE	CU YD TBF
1016	221	218	SS, CL A, TY 2	18	104.0	0.24%	21.3
1017	219	220	SS, CL A, TY 2	12	60.0	0.33%	7.9
1017A	219A	219	SS, CL A, TY 2	12	12.0	0.33%	1.6
1018	220	221	SS, CL A, TY 2	12	6.0	0.33%	0.8
1018A	220A	220	SS, CL A, TY 2	12	12.0	0.33%	1.6
1019	221A	221	SS, CL A, TY 2	15	136.0	0.74%	16.5
1019A	224	221A	SS, CL A, TY 2	15	135.0	0.74%	25.7
1020	222	223	SS, CL A, TY 2	12	31.0	0.35%	4.1
1021	223	224	SS, CL A, TY 2	12	37.0	0.35%	6.4

PLAN LEGEND:

- ADJ MANHOLES OR CATCH BASINS TO BE ADJUSTED
- REC MANHOLES TO BE RECONSTRUCTED
- * WITH NEW TYPE 1 FRAME, CLOSED LID
- ** WITH NEW TYPE 1 FRAME, OPEN LID
- R REMOVING MANHOLES OR CATCH BASINS
- STORM SEWER REMOVAL



STRUCTURES TO BE ADJUSTED/RECONSTRUCTED

STA.	OFFSET	TYPE	RIM ELEV.		INVERT (TOP FOR WATER)			
			EX	PROP	N	S	E	W
372+32.3	13.7	LT CB	644.17	642.99	EX 630.2	EX 630.22		EX 639.48
372+64.4	49.2	LT WATER	644.41	643.19	EX 636.67	EX 636.57		
372+76.9	7.9	LT MH	644.25	643.41	EX 630.23			EX 638.51
373+92.6	2.6	LT MH	645.31	643.45	EX 630.37	EX 630.38		
374+94.1	3.2	RT MH	646.59	644.54	EX 631.22	EX 631.23		
376+77.8	0.4	RT MH	648.18	646.24	EX 632.38	EX 632.46		

TRENCH BACKFILL FOR PIPE REMOVALS

FROM STR. NO.	TO STR. NO.	RIM 1	RIM 2	INV 1	INV 2	DEPTH FT	DIA FT	WIDTH FT	LEN FT	TBF CU YD
372+77	372+77	643.04	643.41	640.14	638.71	1.800	1	3.08	29.6	6.1
372+77	372+82	643.41	643.47	638.51	641.03	1.670	1	3.08	10.0	2
373+43	373+43	643.45	642.85	639.14	639.45	1.855	1	3.08	31.3	6.7
373+43	373+43	643.45	642.83	640.14	641.04	0.550	1	3.08	27.1	1.8
374+94	375+01	644.04	643.52	637.87	639.41	3.140	1	3.08	26.2	9.4
374+94	374+97	644.04	644.02	643.18	643.33	0.000	1	3.08	6.8	0
376+78	377+28	645.68	645.50	641.07	641.78	2.165	1	3.08	65.7	13.8
377+28	377+28	646.18	645.50	642.84	642.44	1.200	1	3.08	30.9	4.3

PLAN
 DATE: 10/19/2012
 DRAWN BY: JRP
 CHECKED BY: JRP
 DESIGNED BY: JRP
 REVISIONS: 1. DATE: 10/19/2012
 2. DATE: 10/19/2012

PROF. 1:1
 DATE: 10/19/2012
 DRAWN BY: JRP
 CHECKED BY: JRP
 DESIGNED BY: JRP
 REVISIONS: 1. DATE: 10/19/2012
 2. DATE: 10/19/2012