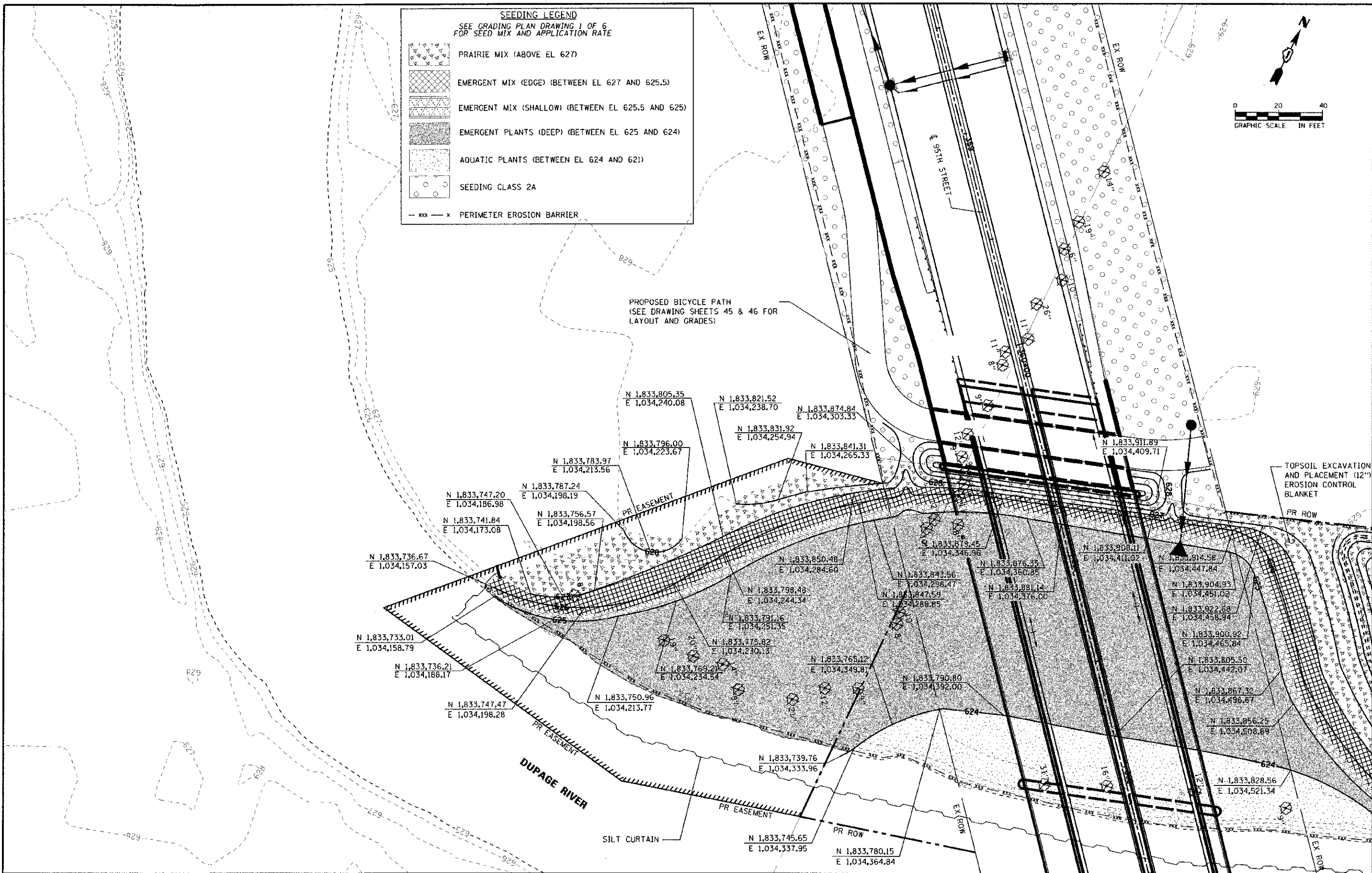
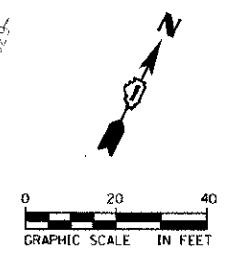


**SEEDING LEGEND**  
SEE GRADING PLAN DRAWING 1 OF 6 FOR SEED MIX AND APPLICATION RATE

- PRAIRIE MIX (ABOVE EL 627)
- EMERGENT MIX (EDGE) (BETWEEN EL 627 AND 625.5)
- EMERGENT MIX (SHALLOW) (BETWEEN EL 625.5 AND 625)
- EMERGENT PLANTS (DEEP) (BETWEEN EL 625 AND 624)
- AQUATIC PLANTS (BETWEEN EL 624 AND 621)
- SEEDING CLASS 2A
- PERIMETER EROSION BARRIER



**URS**  
100 S. WACKER DR.  
SUITE 500  
CHICAGO IL 60606  
TEL (312) 939-4000  
FAX (312) 939-4998

USER NAME: janes.pugh  
DESIGNED: JRP  
DRAWN: MRF  
CHECKED: JRP  
DATE: 10/19/2012

REVISIONS:  
REVISION NO. 1  
REVISION DESCRIPTION  
DATE

STATE OF ILLINOIS  
DEPARTMENT OF TRANSPORTATION

95TH STREET  
GRADING PLAN - NORTHWEST RIVER BANK

SCALE: 1"=20'  
DRAWING NO. 3 OF 6  
STA. TO STA.

F.A.U. RTE.	SECTION	COUNTY	TOTAL SHEETS	SHEET NO.
1644	01-0018-00-FP	WILL	328	92
ILLINOIS FED. AID PROJECT			CONTRACT NO. 63647	