

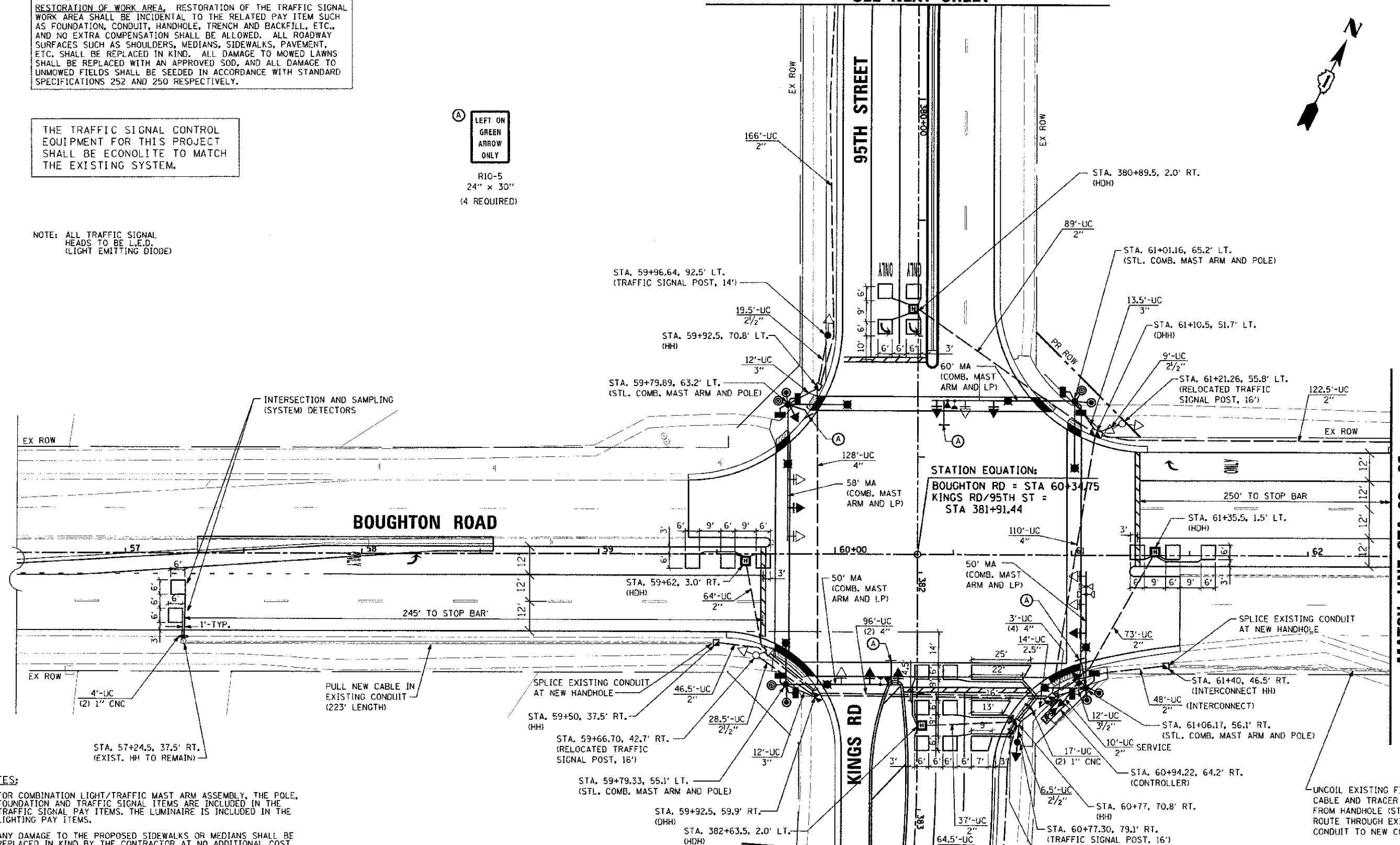
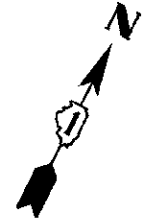
RESTORATION OF WORK AREA. RESTORATION OF THE TRAFFIC SIGNAL WORK AREA SHALL BE INCIDENTAL TO THE RELATED PAY ITEM SUCH AS FOUNDATION, CONDUIT, HANDHOLE, TRENCH AND BACKFILL, ETC., AND NO EXTRA COMPENSATION SHALL BE ALLOWED. ALL ROADWAY SURFACES SUCH AS SHOULDERS, MEDIANS, SIDEWALKS, PAVEMENT, ETC. SHALL BE REPLACED IN KIND. ALL DAMAGE TO MOWED LAWNS SHALL BE REPLACED WITH AN APPROVED SOD, AND ALL DAMAGE TO UNMOWED FIELDS SHALL BE SEEDED IN ACCORDANCE WITH STANDARD SPECIFICATIONS 252 AND 250 RESPECTIVELY.

THE TRAFFIC SIGNAL CONTROL EQUIPMENT FOR THIS PROJECT SHALL BE ECONOLITE TO MATCH THE EXISTING SYSTEM.

NOTE: ALL TRAFFIC SIGNAL HEADS TO BE L.E.D. (LIGHT EMITTING DIODE)

A LEFT ON GREEN ARROW ONLY
R10-5
24" x 30"
(4 REQUIRED)

MATCH LINE STA. 379 + 60 -
SEE NEXT SHEET



MATCH LINE STA. 62 + 35 -
SEE NEXT SHEET

- NOTES:**
- FOR COMBINATION LIGHT/TRAFFIC MAST ARM ASSEMBLY, THE POLE, FOUNDATION AND TRAFFIC SIGNAL ITEMS ARE INCLUDED IN THE TRAFFIC SIGNAL PAY ITEMS. THE LUMINAIRE IS INCLUDED IN THE LIGHTING PAY ITEMS.
 - ANY DAMAGE TO THE PROPOSED SIDEWALKS OR MEDIANS SHALL BE REPLACED IN KIND BY THE CONTRACTOR AT NO ADDITIONAL COST.
 - ALL WORK INVOLVED WITH THE REINSTALLATION OF MAST ARM MOUNTED LED INTERNALLY ILLUMINATED STREET NAME SIGNS SHALL BE PAID FOR AS "RELOCATE EXISTING ILLUMINATED SIGN".



MATCH LINE STA. 383 + 20 -
SEE NEXT SHEET

URS
100 S. WACKER DR.
SUITE 500
CHICAGO, IL 60606
TEL (312) 939-1000
FAX (312) 939-4988

USER NAME: j. jones
DESIGNED - JRP
DRAWN - MRF
CHECKED - JRP
DATE - 10/19/2012

REVISIONS:
REVISED -
REVISED -
REVISED -
REVISED -

STATE OF ILLINOIS
DEPARTMENT OF TRANSPORTATION

TRAFFIC SIGNAL PLAN
95TH AND BOUGHTON RD

SCALE: 1" = 20' DRAWING NO. 3 OF 6 STA. TO STA.

F.A.U. RTE. 1644	SECTION 01-00181-00-FP	COUNTY WILL	TOTAL SHEETS 328	SHEET NO. 119
CONTRACT NO. 63647				ILLINOIS FED. AID PROJECT