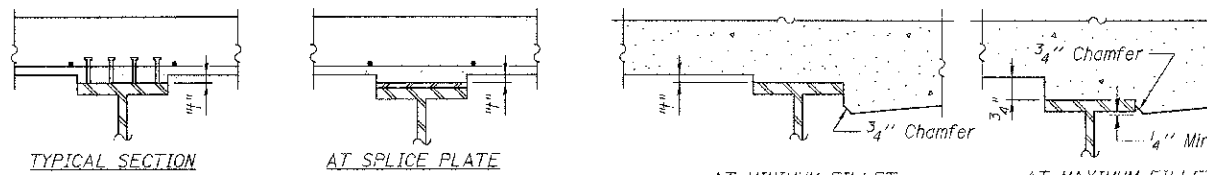


Note:

The above deflections are not to be used in the field if the engineer is working from the grade elevations adjusted for dead load deflections as shown below.



INTERIOR GIRDERS

EXTERIOR GIRDERS

FILLET HEIGHTS

To determine "t": After all structural steel has been erected, elevations of the top flanges of the beams shall be taken at intervals shown below. These elevations subtracted from the "Theoretical Grade Elevations Adjusted For Dead Load Deflection" shown below, minus slab thickness, equals the fillet heights "t" above top flange of girders.

NORTH EDGE OF DECK

Location	Station	Offset*	Theoretical Grade Elevations	Theoretical Grade Elevations Adjusted For Dead Load Deflection
EAST END OF W. APPROACH PAVEMENT & BK. W. ABUT.	360+76.40	36.50	641.31	641.31
C.L. BRG. W. ABUT.	360+79.75	36.50	641.32	641.32
A	360+89.75	36.50	641.36	641.42
B	360+99.75	36.50	641.39	641.52
C	361+09.75	36.50	641.41	641.60
D	361+19.75	36.50	641.43	641.65
E	361+29.75	36.50	641.44	641.68
F	361+39.75	36.50	641.44	641.70
G	361+49.75	36.50	641.43	641.68
H	361+59.75	36.50	641.41	641.64
I	361+69.75	36.50	641.39	641.59
J	361+79.75	36.50	641.36	641.51
K	361+89.75	36.50	641.32	641.43
L	361+99.75	36.50	641.27	641.34
M	362+09.75	36.50	641.21	641.25
N	362+19.75	36.50	641.14	641.16
C.L. PIER	362+29.75	36.50	641.07	641.07
O	362+39.75	36.50	640.99	641.00
P	362+49.75	36.50	640.90	640.94
Q	362+59.75	36.50	640.80	640.87
R	362+69.75	36.50	640.69	640.81
S	362+79.75	36.50	640.57	640.73
T	362+89.75	36.50	640.46	640.66
U	362+99.75	36.50	640.35	640.58
V	363+09.75	36.50	640.24	640.48
W	363+19.75	36.50	640.13	640.38
X	363+29.75	36.50	640.02	640.26
Y	363+39.75	36.50	639.91	640.12
Z	363+49.75	36.50	639.79	639.98
AA	363+59.75	36.50	639.68	639.81
AB	363+69.75	36.50	639.57	639.64
C.L. BRG. E. ABUT.	363+79.75	36.50	639.46	639.46
WEST END OF E. APPROACH PAVEMENT & BK. E. ABUT.	363+81.10	36.50	639.45	639.45

GIRDER 1

Location	Station	Offset*	Theoretical Grade Elevations	Theoretical Grade Elevations Adjusted For Dead Load Deflection
EAST END OF W. APPROACH PAVEMENT & BK. W. ABUT.	360+76.98	33.00	641.37	641.37
C.L. BRG. W. ABUT.	360+78.33	33.00	641.38	641.38
A	360+88.33	33.00	641.42	641.49
B	360+98.33	33.00	641.46	641.58
C	361+08.33	33.00	641.48	641.66
D	361+18.33	33.00	641.50	641.72
E	361+28.33	33.00	641.51	641.75
F	361+38.33	33.00	641.51	641.77
G	361+48.33	33.00	641.50	641.75
H	361+58.33	33.00	641.49	641.71
I	361+68.33	33.00	641.46	641.66
J	361+78.33	33.00	641.43	641.59
K	361+88.33	33.00	641.39	641.51
L	361+98.33	33.00	641.34	641.42
M	362+08.33	33.00	641.29	641.33
N	362+18.33	33.00	641.22	641.24
C.L. PIER	362+28.33	33.00	641.15	641.15
O	362+38.33	33.00	641.07	641.08
P	362+48.33	33.00	640.98	641.02
Q	362+58.33	33.00	640.88	640.96
R	362+68.33	33.00	640.78	640.89
S	362+78.33	33.00	640.66	640.81
T	362+88.33	33.00	640.55	640.74
U	362+98.33	33.00	640.44	640.66
V	363+08.33	33.00	640.32	640.57
W	363+18.33	33.00	640.21	640.47
X	363+28.33	33.00	640.10	640.35
Y	363+38.33	33.00	639.99	640.21
Z	363+48.33	33.00	639.88	640.06
AA	363+58.33	33.00	639.77	639.90
AB	363+68.33	33.00	639.66	639.73
C.L. BRG. E. ABUT.	363+78.33	33.00	639.55	639.55
WEST END OF E. APPROACH PAVEMENT & BK. E. ABUT.	363+79.68	33.00	639.53	639.53

GIRDER 2

Location	Station	Offset*	Theoretical Grade Elevations	Theoretical Grade Elevations Adjusted For Dead Load Deflection
EAST END OF W. APPROACH PAVEMENT & BK. W. ABUT.	360+73.62	24.67	641.52	641.52
C.L. BRG. W. ABUT.	360+74.97	24.67	641.53	641.53
A	360+84.97	24.67	641.58	641.64
B	360+94.97	24.67	641.61	641.74
C	361+04.97	24.67	641.64	641.82
D	361+14.97	24.67	641.66	641.88
E	361+24.97	24.67	641.67	641.92
F	361+34.97	24.67	641.68	641.93
G	361+44.97	24.67	641.67	641.92
H	361+54.97	24.67	641.66	641.89
I	361+64.97	24.67	641.64	641.84
J	361+74.97	24.67	641.61	641.77
K	361+84.97	24.67	641.57	641.69
L	361+94.97	24.67	641.53	641.60
M	362+04.97	24.67	641.47	641.51
N	362+14.97	24.67	641.41	641.43
C.L. PIER	362+24.97	24.67	641.34	641.34
O	362+34.97	24.67	641.27	641.28
P	362+44.97	24.67	641.18	641.22
Q	362+54.97	24.67	641.08	641.16
R	362+64.97	24.67	640.98	641.10
S	362+74.97	24.67	640.86	641.02
T	362+84.97	24.67	640.75	640.95
U	362+94.97	24.67	640.64	640.87
V	363+04.97	24.67	640.53	640.77
W	363+14.97	24.67	640.42	640.67
X	363+24.97	24.67	640.31	640.55
Y	363+34.97	24.67	640.20	640.41
Z	363+44.97	24.67	640.08	640.27
AA	363+54.97	24.67	639.97	640.10
AB	363+64.97	24.67	639.86	639.93
C.L. BRG. E. ABUT.	363+74.97	24.67	639.75	639.75
WEST END OF E. APPROACH PAVEMENT & BK. E. ABUT.	363+76.32	24.67	639.74	639.74

* A positive value indicates a left offset from the centerline of 95th street. A negative value indicates a right offset.



100 S. WACKER DR.
SUITE 500
CHICAGO, IL 60606
TEL (312) 939-4000
FAX (312) 939-4198

USER NAME = *STB*
DESIGNED - STB
CHECKED - NPP
DRAWN - SOL
CHECKED - NPP
PLOT SCALE = 1/8" = 1' / IN.
PLOT DATE = 10/16/2012

REVISIONS
REVISIONS
REVISIONS
REVISIONS

STATE OF ILLINOIS
DEPARTMENT OF TRANSPORTATION

TOP OF SLAB ELEVATIONS - 2
STRUCTURE NO. 099-3035

SHEET NO. 5 OF 38 SHEETS

F.A.U. RTE.	SECTION	COUNTY	TOTAL SHEETS	SHEET NO.
1644	01-00181-00-FP	WILL	328	163
				CONTRACT NO. 63647
ILLINOIS, FED. AID PROJECT				