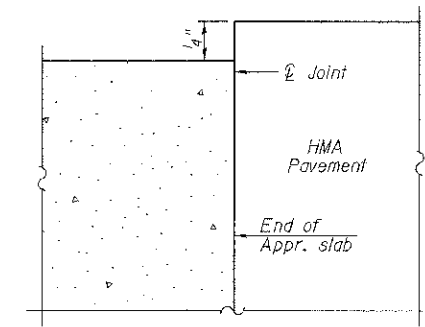
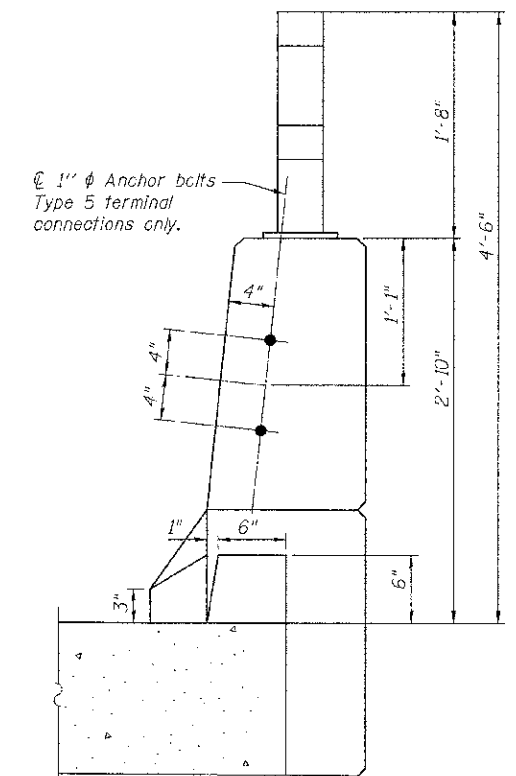


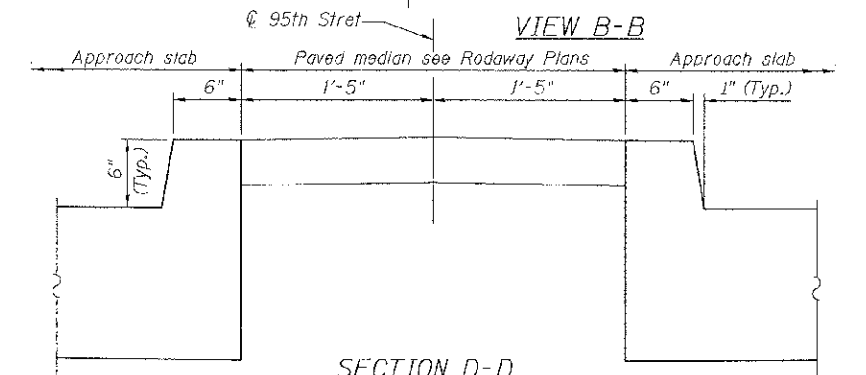
Notes:
See East Approach Slab Details sheet for Sections C-C & D-D, View E-E and location for Detail A. a(E) and a(F) bar spacings measured along $\text{\textcircled{C}}$ Rdwy.



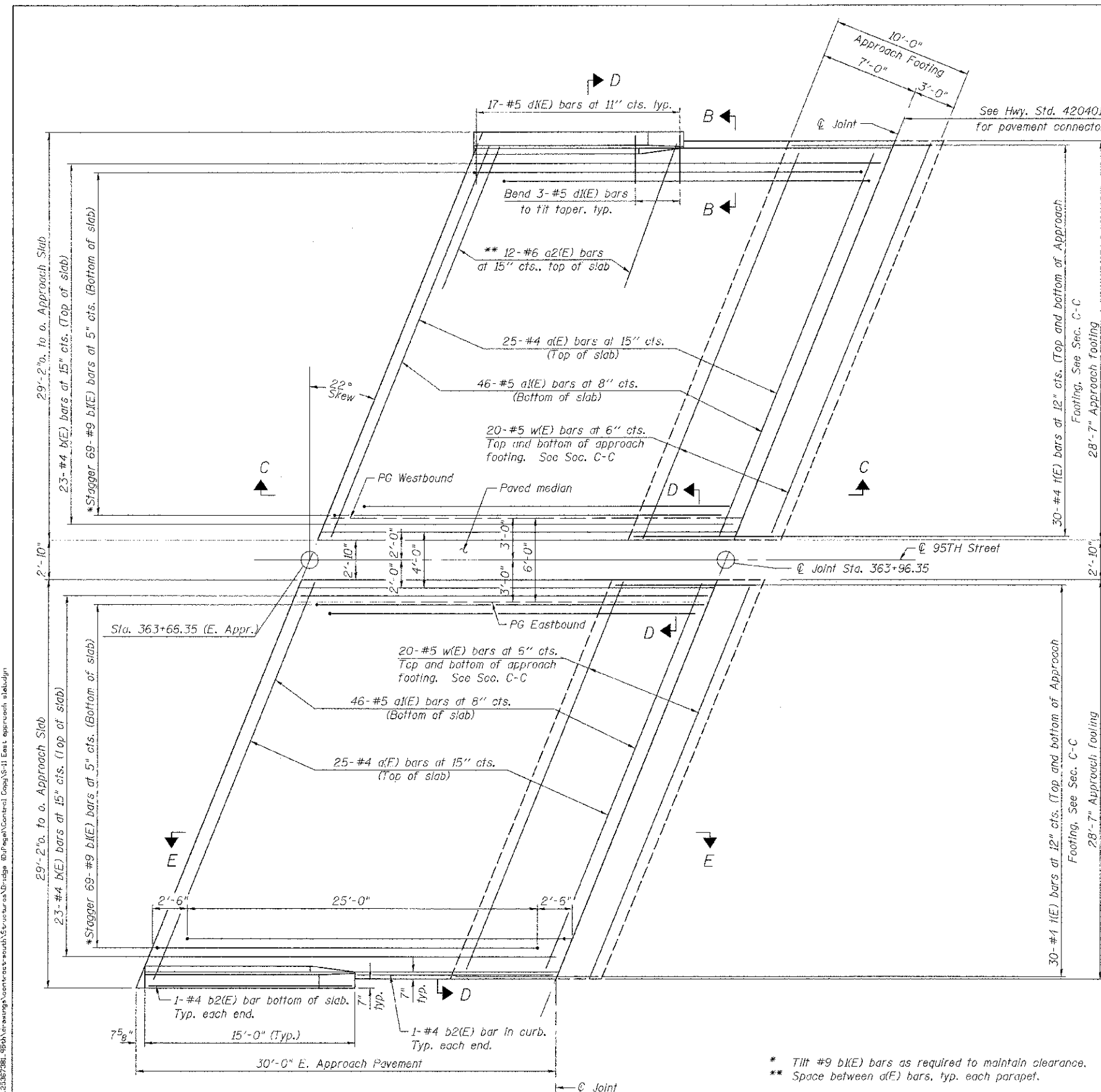
FLEXIBLE PAVEMENT
DETAIL A



VIEW B-B



SECTION D-D



PLAN

* Tilt #9 b(E) bars as required to maintain clearance.
** Space between a(E) bars, typ. each parapet.

FILE NAME: g:\wason_20387281_1956\external\contract\east\structure\11 East approach slab.dgn

BA-L 7-1-10
URS
100 S. WACKER DR.
SUITE 500
CHICAGO, IL 60606
TEL (312) 539-4000
FAX (312) 939-4138

USER NAME = #STB#	DESIGNED - STB	REVISED -
CHICKASAW	CHECKED - NFP	REVISED -
PILOT SCALE - 1/4" = 1'-0"	DRAWN - SOI	REVISED -
PILOT DATE = 12/16/2012	CHECKED - NFP	REVISED -

STATE OF ILLINOIS
DEPARTMENT OF TRANSPORTATION

EAST APPROACH SLAB
STRUCTURE NO. 099-3035

SHEET NO. 11 OF 38 SHEETS

F.A.U. RT. 1644	SECTION 01-CC181-00-FP	COUNTY WILL	TOTAL SHEETS 328	SHEET NO. 169
CONTRACT NO. 63647				
ILLINOIS FED. AID PROJECT				