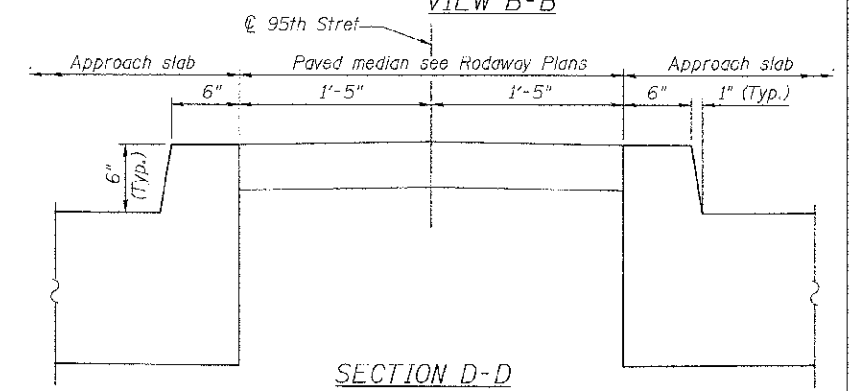
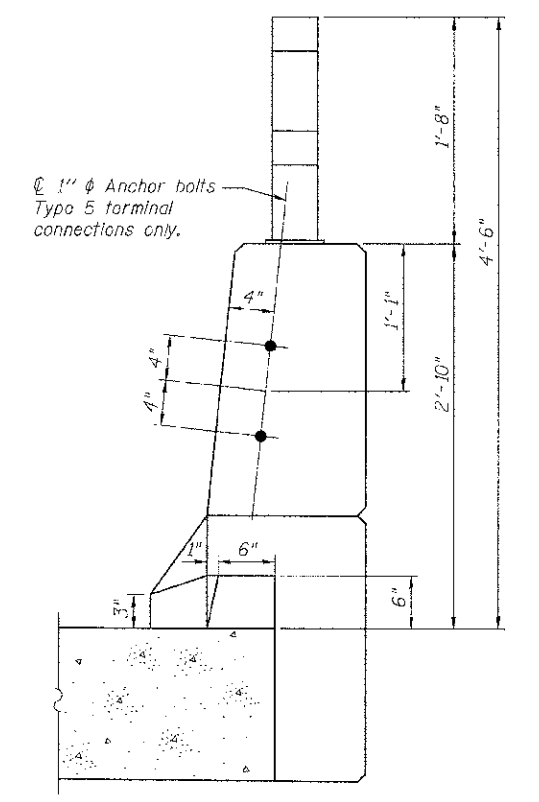
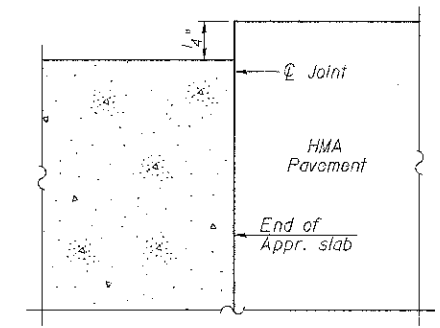
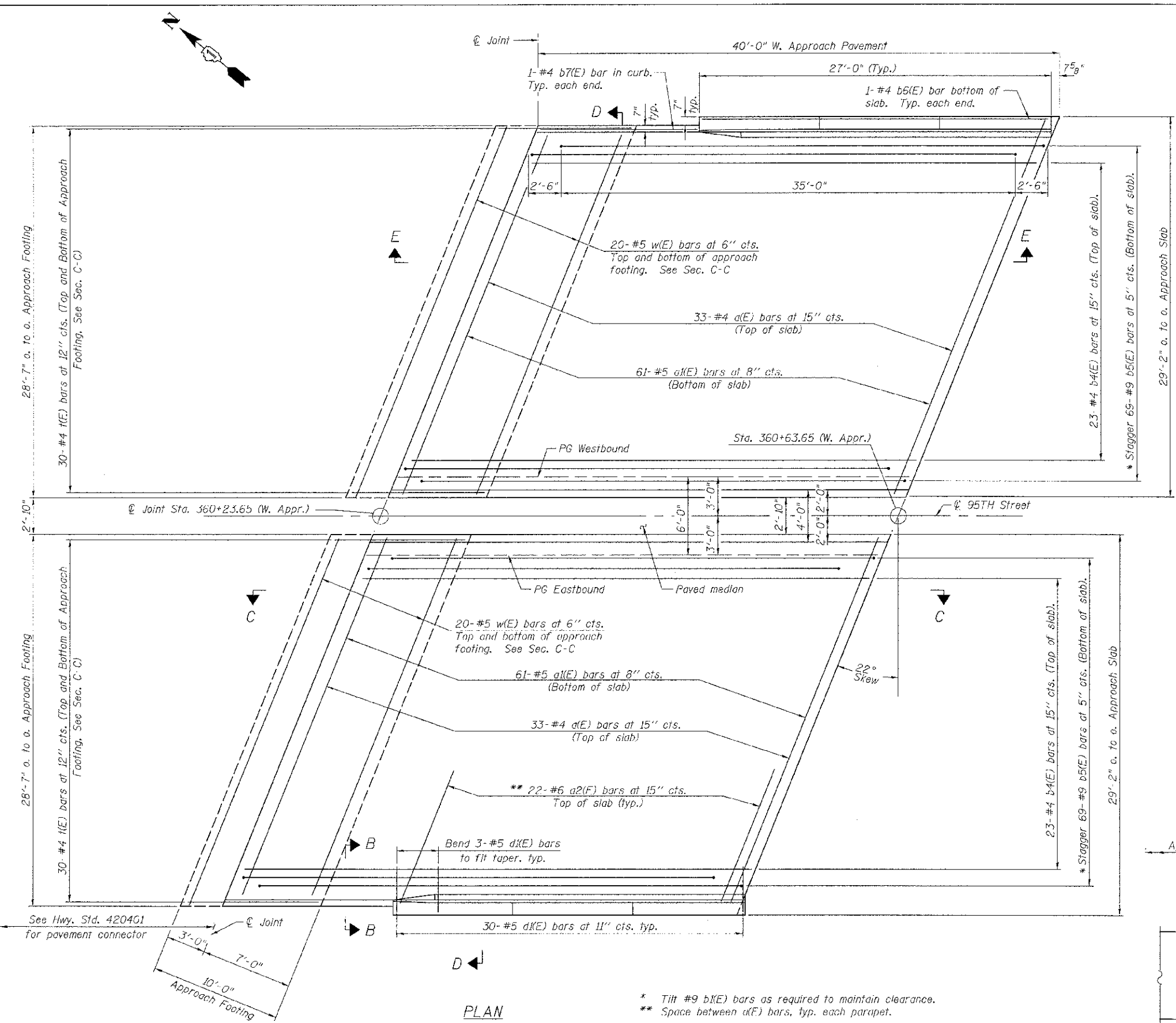


Notes:
See West Approach Slab Details sheet for Sections C-C & D-D, View E-E and location of Detail A. a(E) and a(E) bar spacings measured along \varnothing Rdwy.



* Tilt #9 b(E) bars as required to maintain clearance.
** Space between a(E) bars, typ. each parapet.

FILE NAME: g:\wadol_26367381_9516\dwg\ings\strack\sub\Structure\Bridg\Bridg\Control\Cup\19-13 West approach slab.dwg

BA-L 7-1-10

URS
100 S.WACKER DR.
SUITE 500
CHICAGO IL 60606
TEL (312) 939-1000
FAX (312) 939-4938

USER NAME = JS:18#	DESIGNED - STB	REVISED -
P.O. SCALE = 4x8 1/2" IN.	CHECKED - NPP	REVISED -
P.O. DATE = 10/16/2012	DRAWN - SOI	REVISED -
	CHECKED - NPP	REVISED -

**STATE OF ILLINOIS
DEPARTMENT OF TRANSPORTATION**

**WEST APPROACH SLAB
STRUCTURE NO. 099-3035**

SHEET NO. 13 OF 38 SHEETS

F.A.J. RTE. 1644	SECTION 01-001R1-00-FP	COUNTY WILL	TOTAL SHEETS 328	SHEET NO. 171
			CONTRACT NO. 63647	
ILLINOIS FED. AID PROJECT				