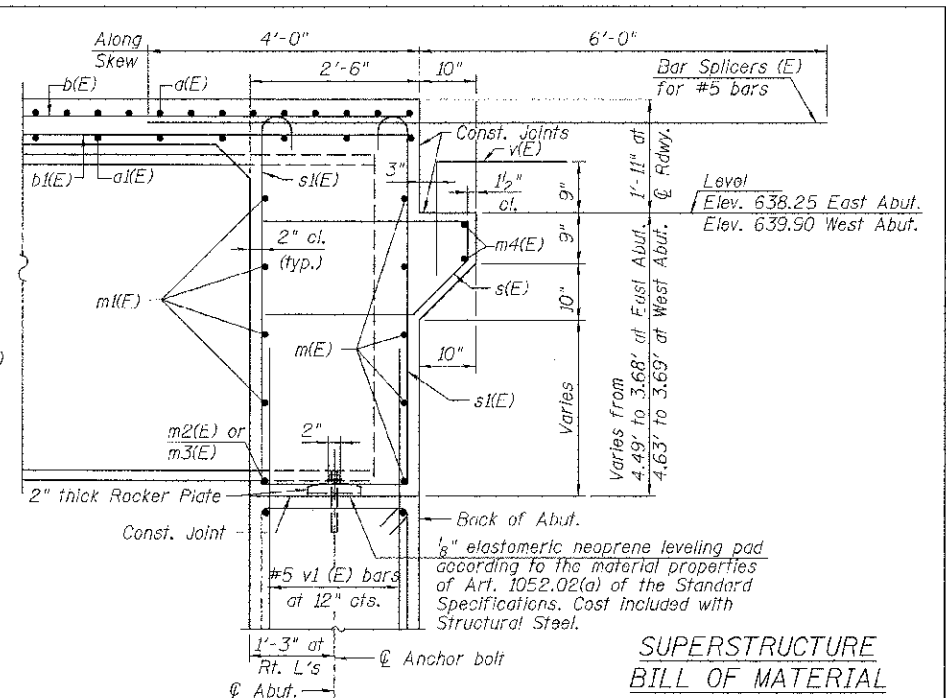


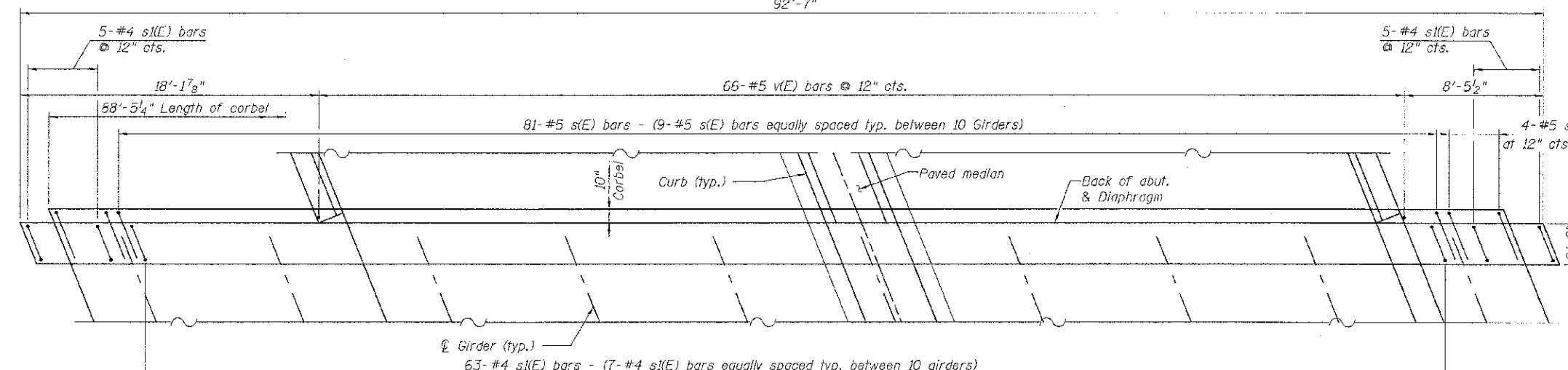
DIAPHRAGM ELEVATION AT ABUTMENT



SECTION A-A  
Dimensions at right angles to abutment, except as shown.

**SUPERSTRUCTURE BILL OF MATERIAL**

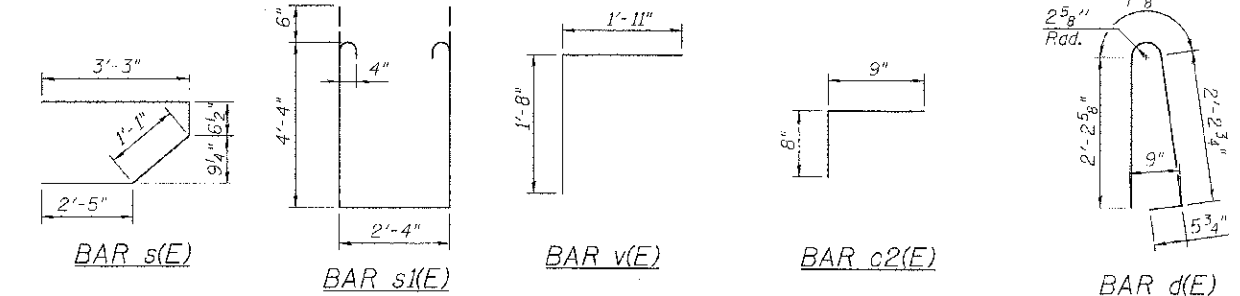
Bar	No.	Size	Length	Shape
a(E)	1322	#5	42'-6"	
a1(E)	1212	#5	29'-5"	
a2(E)	650	#6	14'-0"	
a3(E)	554	#5	2'-6"	
a4(E)	64	#5	2'-0"	
a5(E)	240	#5	2'-9"	
b(E)	902	#5	30'-6"	
b1(E)	166	#6	48'-0"	
b2(E)	621	#5	36'-6"	
b3(E)	55	#5	30'-6"	
c(E)	392	#5	3'-8"	
c2(E)	604	#5	1'-5"	
d(E)	662	#5	5'-7"	
d1(E)	662	#5	4'-8"	
e(E)	20	#4	28'-0"	
e1(E)	16	#8	37'-0"	
e2(E)	32	#4	19'-9"	
e3(E)	4	#8	19'-9"	
e4(E)	224	#4	16'-1"	
m(E)	20	#6	33'-3"	
m1(E)	80	#6	12'-6"	
m2(E)	18	#6	7'-11"	
m3(E)	20	#6	5'-6"	
m4(E)	8	#6	46'-0"	
s(E)	178	#5	7'-3"	
s1(E)	146	#4	12'-0"	
v(E)	132	#5	3'-7"	
Bar Splicer (E)	166	#5	10'-0"	
Reinforcement Bars, Epoxy Coated		Pound	199,820	
Concrete Superstructure		Cu. Yds.	815.4	
Bridge Deck Grooving		Sq. Yds.	1,682	
Protective Coat		Sq. Yds.	3,145	
Conduit Embedded in Structure, 2" dia., PVC		Foot	1548	
Junction Box, Stainless Steel, Embedded in Structure, 18"x12"x8"		Each	6	
Bar Splicers		Each	124	



SECTION B-B

**MINIMUM BAR LAP (Diaphragm)**

#6 Bar = 3'-10"



Notes:  
 Bars indicated thus 1 x 8 - #5 etc. indicates 1 line of bars with 8 lengths per line.  
 Reinforcement bars designated (E) shall be epoxy coated.  
 Reinforcement bars in diaphragm are billed with superstructure.  
 The s(E) and s1(E) bars shall be placed parallel to the girders. Spacing for these bars shall be at right angle to the girders.

SI-DS1 7-1-10  
**URS**  
 100 S. WACKER DR.  
 SUITE 500  
 CHICAGO, IL 60606  
 TEL (312) 939-1000  
 FAX (312) 939-4990

USER NAME = #STB#	DESIGNED - STB	REVISED -
PLOT SCALE = 1/4" = 1' / 1"	CHECKED - NPP	REVISED -
PLOT DATE = 10/16/2012	DRAWN - SOI	REVISED -
	CHECKED - NPP	REVISED -

**STATE OF ILLINOIS DEPARTMENT OF TRANSPORTATION**

**SUPERSTRUCTURE DETAILS - 2**  
**STRUCTURE NO. 099-3035**  
 SHEET NO. 17 OF 38 SHEETS

F.A. RT. 1644	SECTION 01-C0181-00-FP	COUNTY WILL	TOTAL SHEETS 328	SHEET NO. 175
CONTRACT NO. 63647			ILLINOIS FED. AID PROJECT	