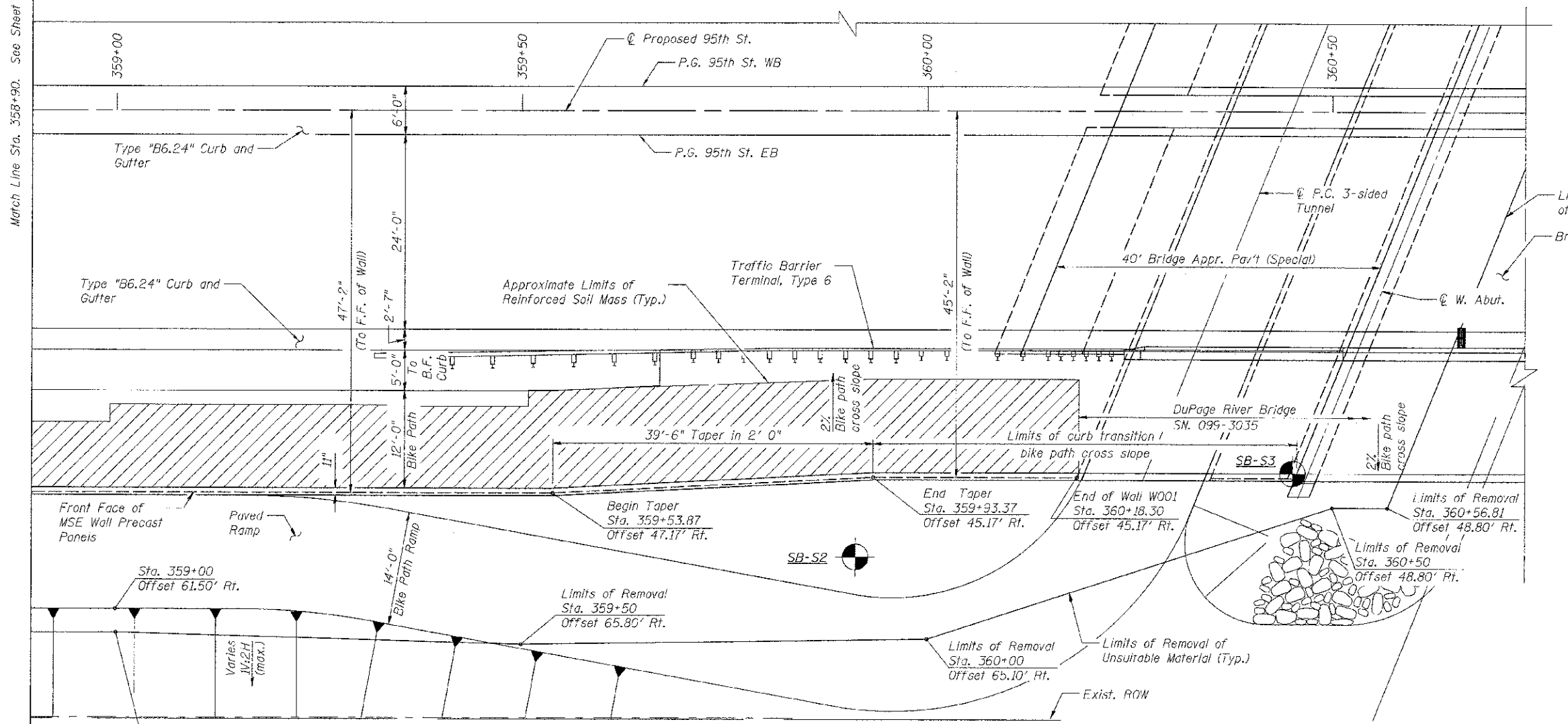


**LEGEND**

Indicates removal and replacement of unsuitable material. See roadway plans.

Contractor shall provide as part of shop drawings for pedestrian tunnel, headwalls and MSF wall, the joint details between these units. The joints shall be waterproof and keyed to prevent movement.



**PLAN**

NOTE: Wall offsets are measure from the  $\odot$  Prop. 95th St. to the front face of precast panels.

Match Line Sta. 358+90. See Sheet Retaining Wall Plan & Elevation 1

FILE NAME: q:\vwdoh\21387281\_95th\vw\plans\contract\north\retaining\wall\plan & elevation.dwg



100 S. WACKER DR.  
SUITE 500  
CHICAGO, IL 60606  
TEL (312) 939-1000  
FAX (312) 939-4998

USER NAME = STDS  
DESIGNED - STB  
CHECKED - NPP  
DRAWN -  
CHECKED - NPP  
PLOT SCALE = 7/8" = 1' / IN.  
PLOT DATE = 10/16/2012

DESIGNED - STB  
CHECKED - NPP  
DRAWN -  
CHECKED - NPP

REVISED -  
REVISED -  
REVISED -  
REVISED -

STATE OF ILLINOIS  
DEPARTMENT OF TRANSPORTATION

RETAINING WALL PLAN & ELEVATION 2  
STRUCTURE NOS. 099-W001 & W002

SHEET NO. 2 OF 5 SHEETS

F.A.U. RTE. 1644	SECTION 01-00181-00-FP	COUNTY WILL	TOTAL SHEETS 328	SHEET NO. 198
CONTRACT NO. 63647				
ILLINOIS FED. AID PROJECT				