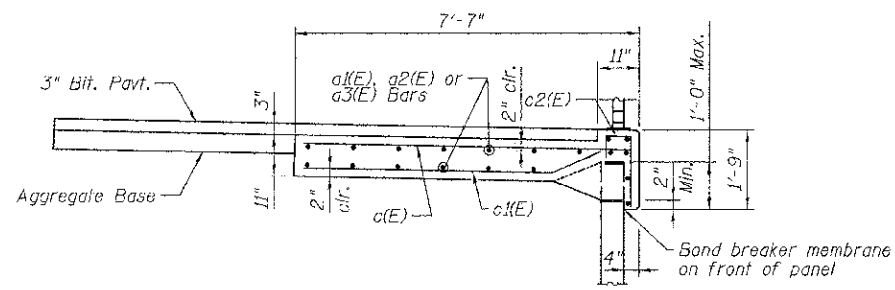
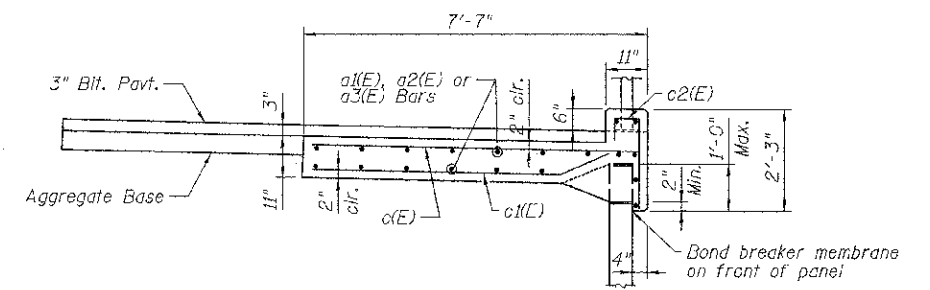


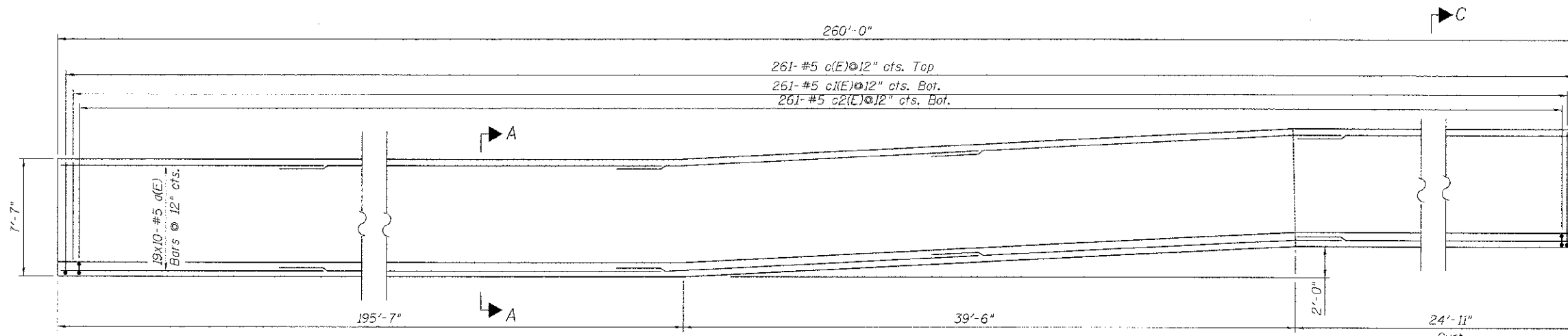
SECTION A-A



SECTION B-B



SECTION C-C



W001 ANCHOR SLAB PLAN
(N.T.S.)

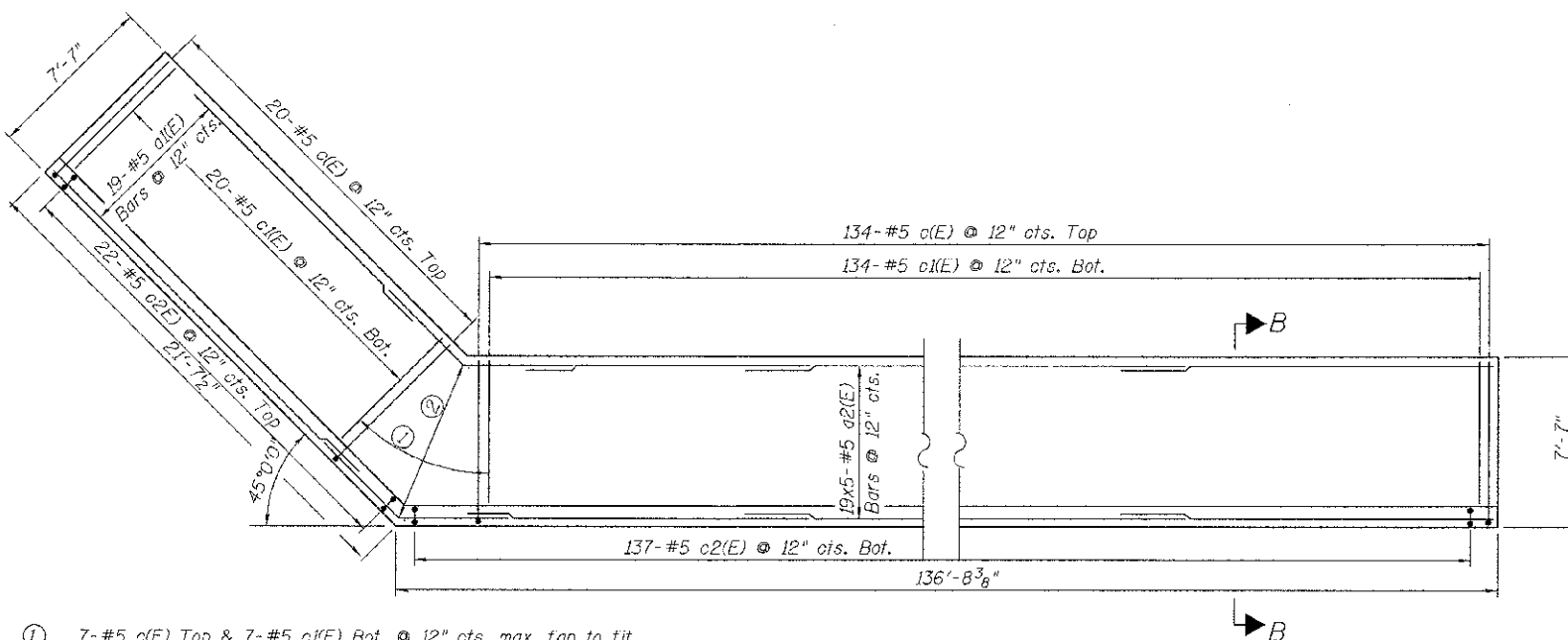
NOTES:

1. Reinforcement bars designated (E) shall be epoxy coated.
2. Concrete clear cover shall be 2" unless noted otherwise.
3. All edges shall have standard 3/4" chamfers except as noted.
4. Min. lap for #5 bar = 2'-7"
5. Bend bars in field as necessary to follow alignment of wall.
6. Bars indicated thus 6x3-#5 ect. Indicates 6 lines of bars with 3 lengths per line.

The MSE wall supplier's internal stability design shall account for the anchor slab's bearing pressure surcharge of 1.0 ksf and horizontal sliding force of 0.5 kips/ft. of wall

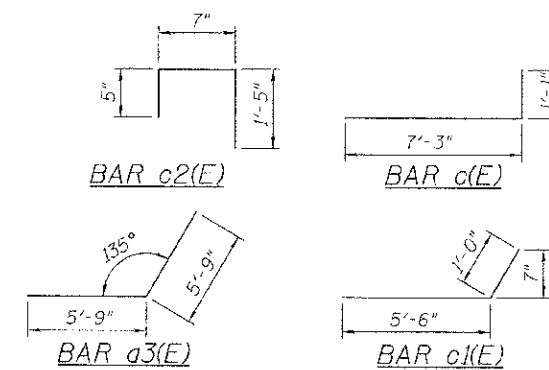
ANCHOR SLAB
BILL OF MATERIAL

Bar	No.	Size	Length	Shape
a(E)	190	#5	28'-4"	—
a1(E)	19	#5	19'-7"	—
a2(E)	95	#5	28'-8"	—
a3(E)	19	#5	11'-6"	—
c(E)	422	#5	8'-4"	┘
c1(E)	422	#5	6'-6"	┘
c2(E)	420	#5	2'-5"	┘
Concrete Superstructure			Cu. Yd.	113
Reinforcement Bars, Epoxy Coated			Pound	16,650



W002 ANCHOR SLAB PLAN
(N.T.S.)

- ① 7-#5 a(E) Top & 7-#5 c1(E) Bot. @ 12" cts. max. tan to fit.
- ② 19-#5 a3(E) bars, Lap with a1(E) and a2(E) bars.



100 S. WACKER DR.
SUITE 500
CHICAGO, IL 60606
TEL (312) 939-4000
FAX (312) 939-4198

USER NAME = *STB*	DESIGNED - STB	REVISED -
PLOT SCALE = 2x4 1/4" / IN.	CHECKED - NPP	REVISED -
PLOT DATE = 10/16/2012	DRAWN - KJZ	REVISED -
	CHECKED - NPP	REVISED -

STATE OF ILLINOIS
DEPARTMENT OF TRANSPORTATION

RETAINING WALL DETAILS 1
STRUCTURE NOS. 099-W001 & W002

SHEET NO. 4 OF 5 SHEETS

F.A.U. RTE.	SECTION	COUNTY	TOTAL SHEETS	SHEET NO.
1644	01-00181-00-PP	WILL.	328	200
CONTRACT NO. 63647			ILLINOIS FED. AID PROJECT	