

EXISTING LEGEND

- (A) EXISTING PORTLAND CEMENT CONCRETE BASE COURSE, 10"
- (B) EXISTING 4" AGGREGATE SUBBASE
- (C) EXISTING COMBINATION CONCRETE CURB & GUTTER TYPE B-6.18 OR EXISTING COMBINATION CONCRETE CURB & GUTTER, TYPE B-6.24 (STA. 10+22 TO STA. 10+75, WEST SIDE AND STA. 9+15 TO STA. 9+65, EAST SIDE)
- (D) EXISTING PORTLAND CEMENT CONCRETE DRIVEWAY, HOT-MIX ASPHALT SURFACE DRIVEWAY, PORTLAND CEMENT CONCRETE SIDEWALK (STA. 33+17 TO STA. 51+60, WEST SIDE AND STA. 10+22 TO STA. 52+69, EAST SIDE), AND EXISTING GRASS PARKWAY
- (E) PROPOSED "HOT-MIX ASPHALT SURFACE REMOVAL, VARIABLE DEPTH", 0" TO 3" AT EXISTING DEPRESSED CURBS FOR HOT-MIX ASPHALT DRIVEWAYS, (AS NOTED ON PLAN)
- (F) PROPOSED "EARTH EXCAVATION" FOR "TOPSOIL FURNISH & PLACE, 4 INCH" AND "SODDING"

INDICATES REMOVAL ITEM

NOTE: CONTRACTOR SHALL MILL BEFORE PATCHING.

HOT-MIX ASPHALT MIXTURE REQUIREMENTS

MIXTURE TYPE	AIR VOIDS @ NDES
PAVEMENT	
HOT-MIX ASPHALT SURFACE COURSE, MIX "D", N50, (IL-9.5mm), 2"	4% @ 50 GYR
POLYMERIZED LEVELING BINDER (MACHINE METHOD), IL-4.75, N50, 2.25" AVG.	4% @ 50 GYR
DRIVEWAYS	
HOT-MIX ASPHALT SURFACE COURSE, MIX "D", N50, (IL-9.5mm), 3" (2 LIFTS)	4% @ 50 GYR

THE UNIT WEIGHT TO CALCULATE ALL HOT-MIX ASPHALT SURFACE MIXTURE QUANTITIES IS 112 LBS/SQ YD/IN.

"THE "AC TYPE" FOR POLYMERIZED HMA MIXES SHALL BE "SBS/SBR PG 76-22" AND FOR NON-POLYMERIZED HMA THE "AC TYPE" SHALL BE "PG 64-22" UNLESS MODIFIED BY DISTRICT ONE SPECIAL PROVISIONS"

"FOR "PERCENT OF RAP" SEE DISTRICT ONE SPECIAL PROVISIONS"

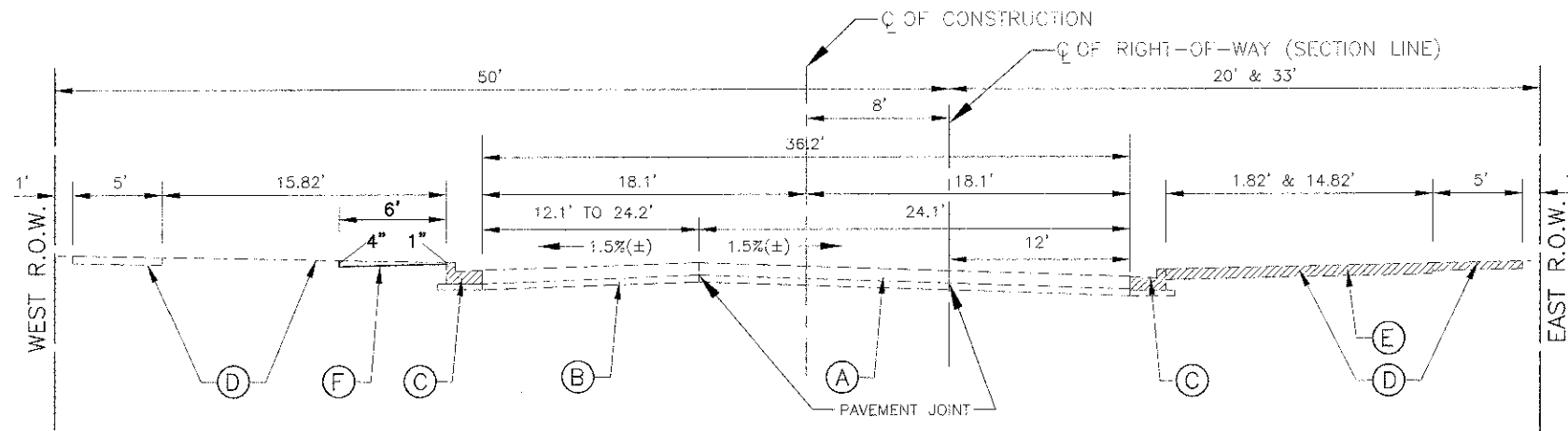
PROPOSED LEGEND

- (A) PROPOSED "HOT-MIX ASPHALT SURFACE COURSE, MIX "D", N50", 2 INCH
- (B) PROPOSED "POLYMERIZED LEVELING BINDER (MACHINE METHOD), IL-4.75, N50" AS NEEDED TO RESTORE 2% MINIMUM CROWN, 2-1/4 INCH AVG.
- (C) PROPOSED "COMBINATION CONCRETE CURB & GUTTER, TYPE B-6.18" RAISED 2-3/4" ABOVE EXISTING EDGE OF PAVEMENT (TYPICAL BOTH SIDES) OR PROPOSED "COMBINATION CONCRETE CURB & GUTTER, TYPE B-6.24" RAISED 2-3/4" ABOVE EXISTING EDGE OF PAVEMENT (STA. 10+22 TO STA. 10+75, WEST SIDE ONLY) AS APPLICABLE
- (D) PROPOSED "HOT-MIX ASPHALT SURFACE REMOVAL, VARIABLE DEPTH" AND "HOT-MIX ASPHALT SURFACE COURSE, MIX "D", N50", 3 INCH, IN 2 LIFTS OR "PORTLAND CEMENT CONCRETE DRIVEWAY PAVEMENT, 6 INCH" OR 8 INCH ON "SUBBASE GRANULAR MATERIAL, TYPE B, 4 INCH" OR PROPOSED "TOPSOIL FURNISH & PLACE, 4 INCH" AND "SODDING"
- (E) PROPOSED "PORTLAND CEMENT CONCRETE SIDEWALK, 6 INCH" OR 8 INCH (AS DIRECTED) ON "SUBBASE GRANULAR MATERIAL, TYPE B, 2 INCH"
- (F) PROPOSED "CLASS B PATCHES, TYPE I - IV, 10 INCH"-AS DIRECTED

IMPORTANT!

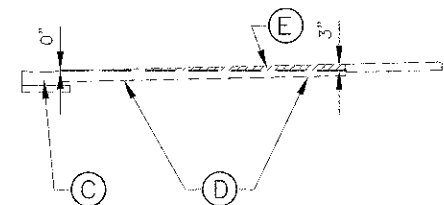
FULL SIZE PLANS HAVE BEEN PREPARED USING STANDARD ENGINEERING SCALES. REDUCED SIZED PLANS WILL NOT CONFORM TO STANDARD SCALES INDICATED IN TITLE BLOCK.

Frank Novotny & Associates, Inc.
 825 Midway Drive • Wheelock, IL • 60157 • Telephone (630) 887-8600 • Fax (630) 887-4132
 ILLINOIS PROFESSIONAL DESIGN FIRM NO. 164-000820

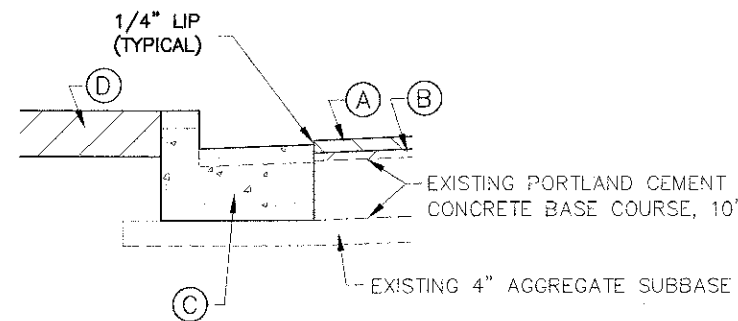


EXISTING TYPICAL SECTION

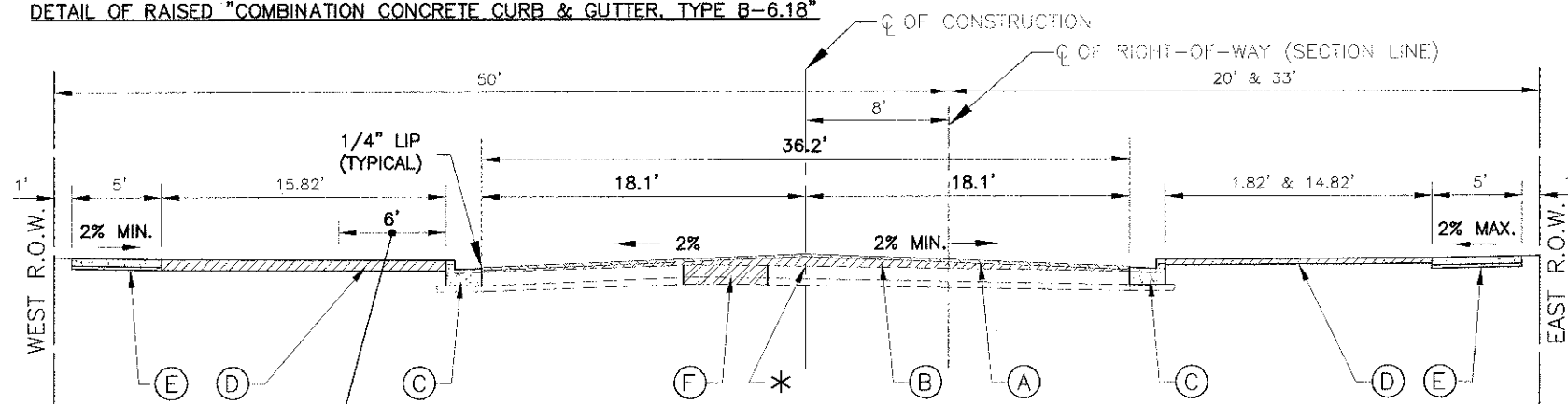
67th STREET TO NORTH OF CATHERINE ANN DRIVE
 STA. 9+45 TO STA. 52+69



DETAIL OF "HOT-MIX ASPHALT SURFACE REMOVAL, VARIABLE DEPTH" AT EXISTING DEPRESSED CURBS FOR HOT-MIX ASPHALT DRIVEWAYS



DETAIL OF RAISED "COMBINATION CONCRETE CURB & GUTTER, TYPE B-6.18"



PROPOSED TYPICAL SECTION

67th STREET TO NORTH OF CATHERINE ANN DRIVE
 STA. 9+45 TO STA. 52+69

EAST AVENUE

* AT LOCATIONS WHERE PROPOSED LEVELING BINDER (MACHINE METHOD) EXCEEDS 2-1/4 INCH THICKNESS, THE LEVELING BINDER SHALL BE CONSTRUCTED IN 2 LIFTS, MINIMUM 3/4 INCH THICKNESS

FILE NAME VILLAGE OF HODGKINS EAST AVENUE 67TH ST. TO JOLIET RD.	USER NAME	DESIGNED - THK	REVISED - JLC 10-15-12
RESURFACING	PLLOT SCALE	DRAWN - JFP	REVISED - JLC 11-02-12
	PLLOT DATE	CHECKED - JLC	REVISED -
		DATE - 4/12	REVISED -

STATE OF ILLINOIS
 DEPARTMENT OF TRANSPORTATION

TYPICAL SECTIONS &
 HOT-MIX ASPHALT MIXTURE REQUIREMENTS

SCALE: 1" = 10' SHEET NO. OF SHEETS STA. TO STA.

F.A. R.T.E.	SECTION	COUNTY	TOTAL SHEETS	SHEET NO.
2719	11-00019-00-RS	COOK	29	4
CONTRACT NO. 63736				
FED. ROAD DIST. NO. ILLINOIS FED. AID PROJECT N-9003 (568)				