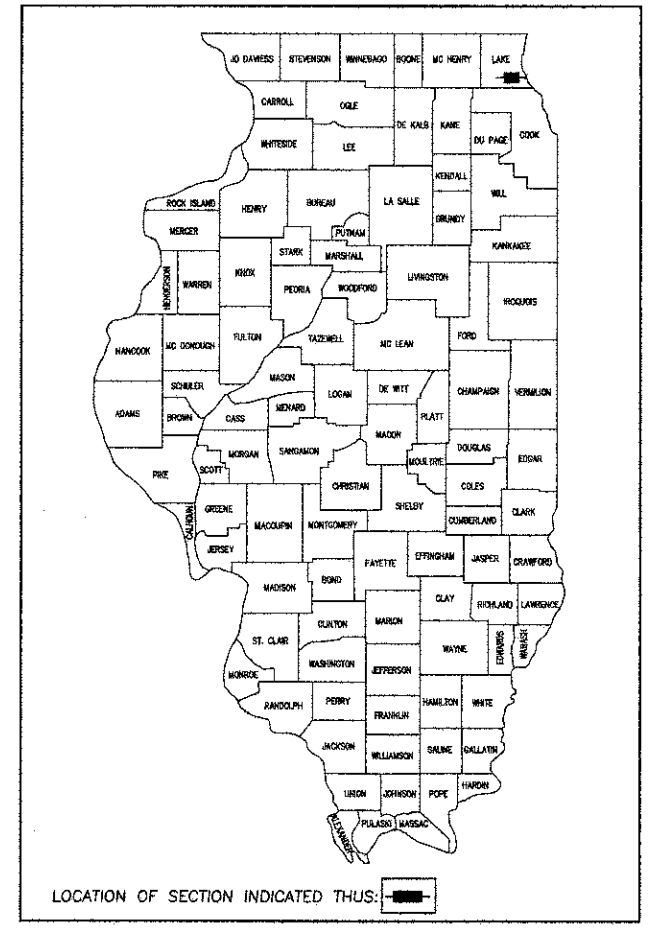


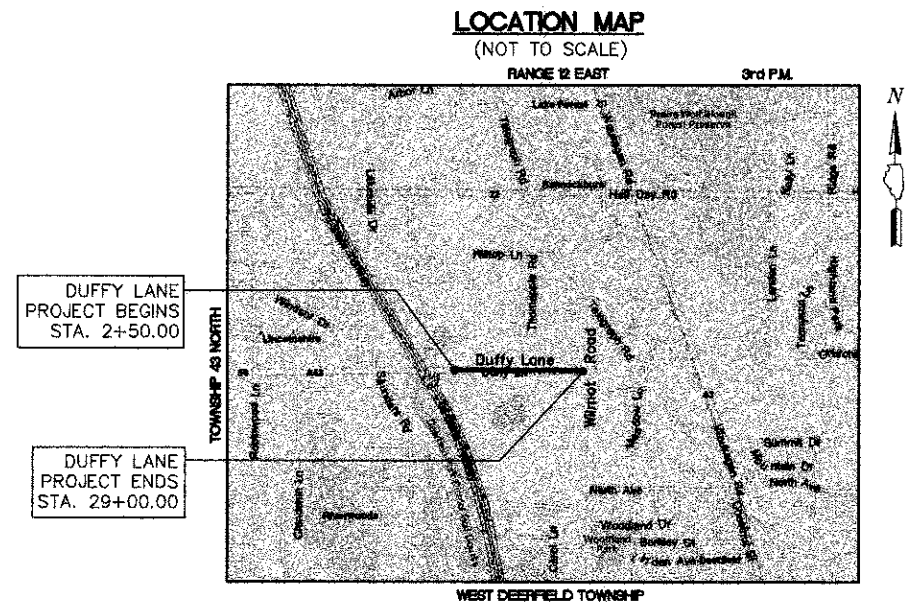
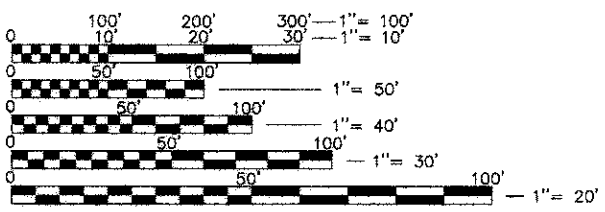
F.A.U. RTE.	SECTION	COUNTY	TOTAL SHEETS	SHEET NO.
1254	12-00013-00-RS	LAKE	32	1
ILLINOIS FED. AID PROJECT			CONTRACT NO. 63751	

STATE OF ILLINOIS
DEPARTMENT OF TRANSPORTATION
DIVISION OF HIGHWAYS
PLANS FOR PROPOSED
FEDERAL AID HIGHWAY
FAU 1254 (DUFFY LANE)
WILMOT ROAD TO CORPORATE LIMITS
RESURFACING
SECTION NUMBER: 12-00013-00-RS
PROJECT NO.: M-4003(095)
VILLAGE OF BANNOCKBURN
LAKE COUNTY
JOB NO.: C-91-054-13

SHEET NO.	INDEX OF SHEETS
1	TITLE SHEET
2	GENERAL NOTES / HIGHWAY STANDARDS
3	SUMMARY OF QUANTITIES
4	TYPICAL SECTIONS
5	ALIGNMENT, TIES AND BENCHMARK
6-8	DEMOLITION PLANS
9-13	PLAN AND PROFILES / DRAINAGE AND UTILITIES
14	PAVEMENT MARKING PLAN
15-17	EROSION CONTROL PLANS
18-25	CROSS SECTIONS
26-32	DISTRICT ONE STANDARD DETAILS



FULL SIZE PLANS HAVE BEEN PREPARED USING STANDARD ENGINEERING SCALES. REDUCED SIZED PLANS WILL NOT CONFORM TO STANDARD SCALES. IN MAKING MEASUREMENTS ON REDUCED PLANS, THE BELOW SCALES MAY BE USED.



PROJECT INFORMATION
 GROSS & NET LENGTH OF PROJECT = 2650 FT 0.502 MI)
 ADT = 1250 VPD (2007)
 POSTED SPEED LIMIT = 25 MPH
 DESIGN SPEED LIMIT = 30 MPH
 FUNCTIONAL CLASSIFICATION = URBAN COLLECTOR

JULIE
JOINT UTILITY LOCATION INFORMATION FOR EXCAVATION CALL 811

STATE OF ILLINOIS
DEPARTMENT OF TRANSPORTATION
DIVISION OF HIGHWAYS

APPROVED: 10/9/2012 2012
Janice Kunkler
VILLAGE OF BANNOCKBURN

PASSED: NOVEMBER 9 2012
CHLOE C. HOIT
DISTRICT ONE ENGINEER OF LOCAL ROADS AND STREETS

RELEASING FOR BID BASED ON LIMITED REVIEW: November 9 2012
Ally Foltz
DEPUTY DIRECTOR OF HIGHWAYS, REGION ONE ENGINEER

PROFESSIONAL ENGINEER'S SIGNATURE & SEAL

David J. Gewalt

DAVID J. GEWALT
REGISTERED PROFESSIONAL ENGINEER
EXPIRES: _____

GHA GEWALT HAMILTON ASSOCIATES, INC.
850 Forest Edge Drive ■ Vernon Hills, IL. 60061
TEL 847.478.9700 ■ FAX 847.478.9701

PRINTED BY THE AUTHORITY OF THE STATE OF ILLINOIS

PROGRAM AND OFFICE ENGINEER: CHARLES F. RIDDLE, P.E. (847) 705-4408 SCHAUMBURG, ILL.

CONTRACT NO. 63751
FILE NAME = 8101-057 PR2.DWG