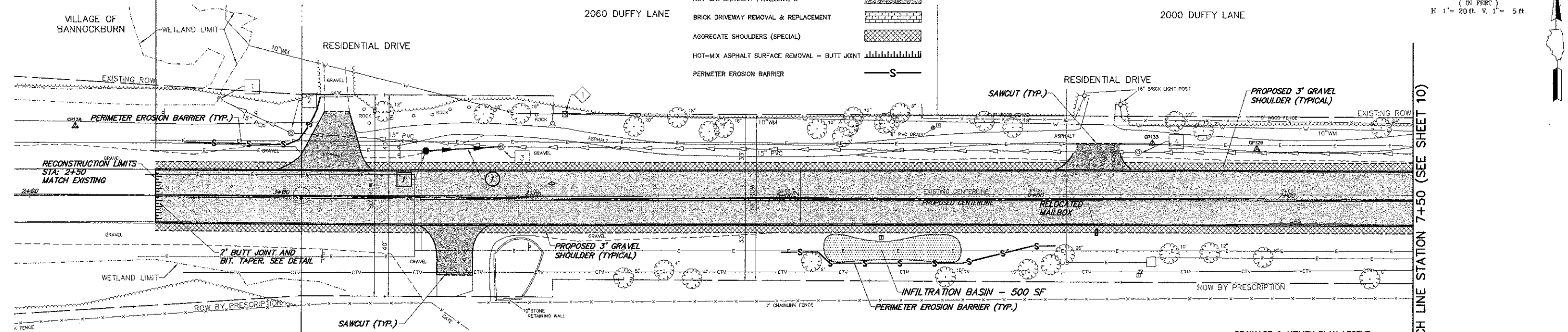
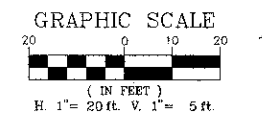


**BEGIN IMPROVEMENTS
STA. 2+50**

PLAN & PROFILE LEGEND

- HOT-MIX ASPHALT SURFACE COURSE, MIX "D", NSD
- HOT-MIX DRIVEWAY PAVEMENT, 3"
- BRICK DRIVEWAY REMOVAL & REPLACEMENT
- AGGREGATE SHOULDERS (SPECIAL)
- HOT-MIX ASPHALT SURFACE REMOVAL - BUTT JOINT
- PERIMETER EROSION BARRIER

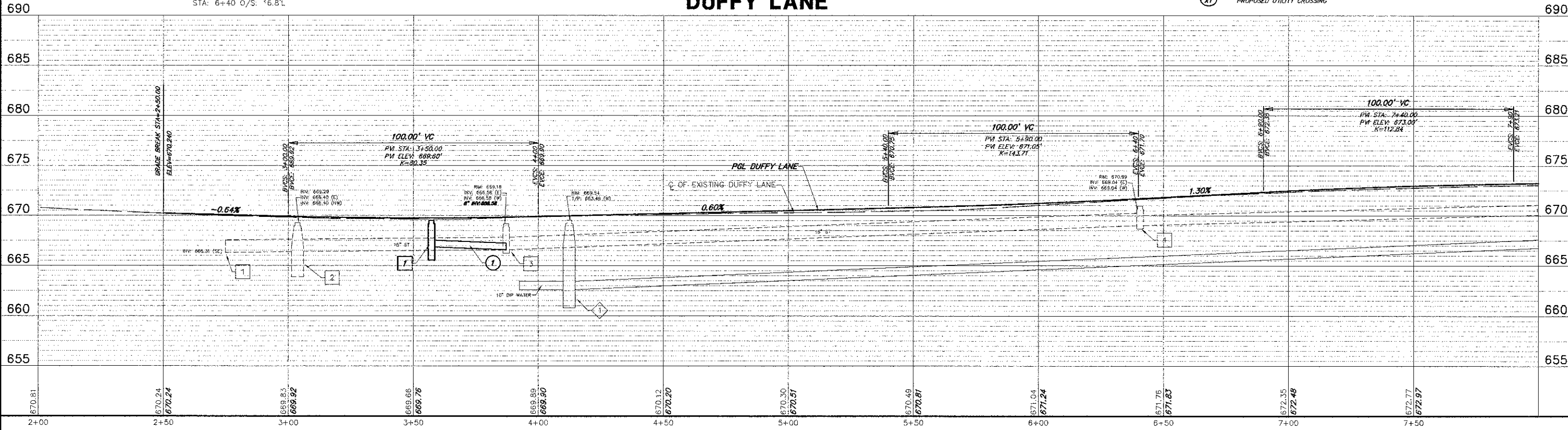


- 1 EX. 15" FLARED END SECTION
INV: 666.31
STA: 2+75 O/S: 38.3'L
- 2 EX. STORM MANHOLE
RIM: 669.29 INV: 666.40
STA: 3+04 O/S: 24.9'L
- 3 EX. STORM MANHOLE
RIM: 669.18 INV: 666.58
8" INV: 666.58
STA: 3+87 O/S: 19.4'L
- 4 EX. STORM MANHOLE
RIM: 670.99 INV: 669.04
E 12" INV: 669.14
STA: 6+40 O/S: 16.8'L
- EX. W/M VALVE VAULT
RIM: 669.54 I/P: 663.49
STA: 4+13 O/S: 32.3'L
- 1 STORM SEWER CATCHBASIN
TY "C" 24" TY B GRATE
WITH 6" FLATOP
RIM: 669.00 INV: 666.88
STA: 3+57 O/S: 18.6'L
- 30 LF 8" SS, CL. B. TY 2, @ 1.00%

DRAINAGE & UTILITY PLAN LEGEND

- EXISTING SANITARY STRUCTURE
- EXISTING SANITARY SEWER
- EXISTING WATERMAIN STRUCTURE
- EXISTING WATERMAIN
- EXISTING STORM SEWER STRUCTURE
- EXISTING STORM SEWER
- PROPOSED STORM SEWER STRUCTURE
- PROPOSED STORM SEWER
- PROPOSED STORM SEWER PIPE
- PROPOSED STORM SEWER FLARED END SECTION
- PROPOSED STORM SEWER CATCHBASIN
- PROPOSED STORM SEWER INLET
- PROPOSED UTILITY CROSSING

DUFFY LANE



FILE NAME = 8101-057 PR8.dwg	USER NAME = GW3	DESIGNED - DJG	REVISED -	STATE OF ILLINOIS DEPARTMENT OF TRANSPORTATION	PROPOSED PLAN & PROFILE / DRAINAGE AND UTILITIES			FA R.T.E. 1254	SECTION 12-00013-00-RS	COUNTY LAKE	TOTAL SHEETS 32	SHEET NO. 9
PLOT SCALE = 1:1		CHECKED - DJG	REVISED -					SCALE: AS NOTED	SHEET NO. 9 OF 32 SHEETS	STA. 2+50 TO STA. 7+50	CONTRACT # 63751	
PLOT DATE = 08.10.2012		DATE - 08.10.2012	REVISED -									