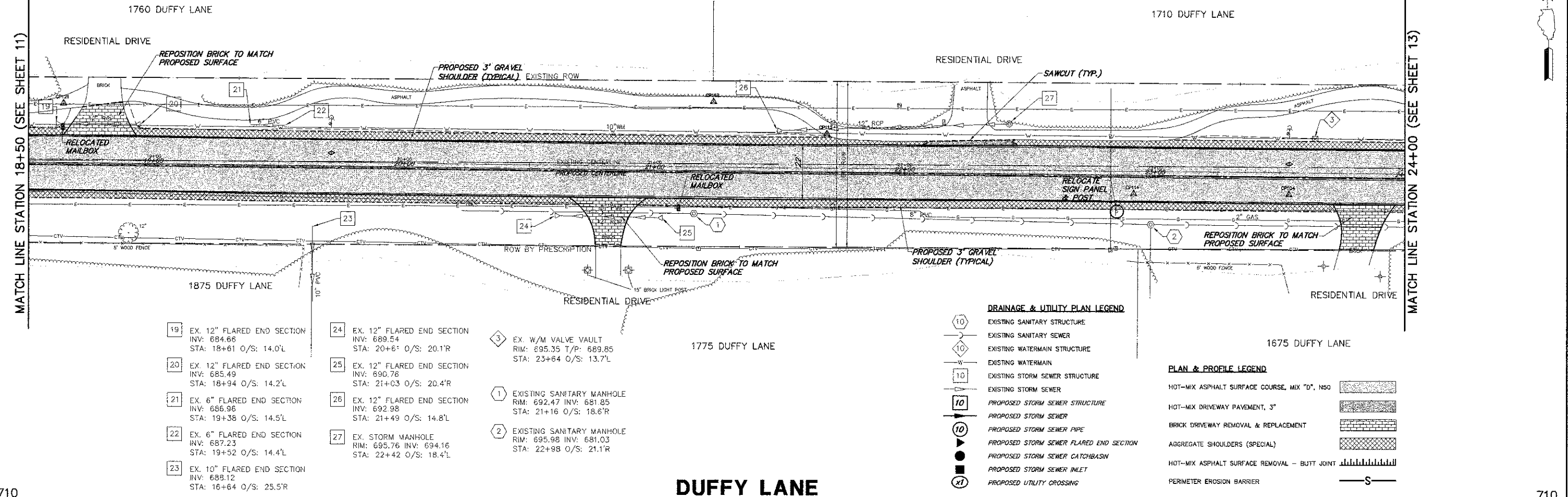




MATCH LINE STATION 18+50 (SEE SHEET 11)

MATCH LINE STATION 24+00 (SEE SHEET 13)

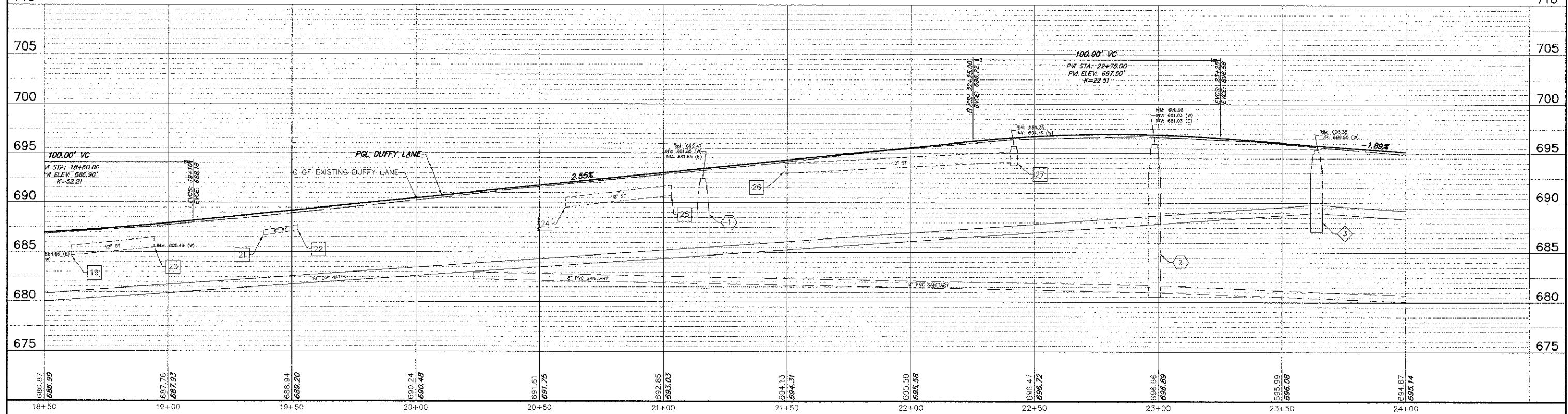


- | | | |
|---|--|---|
| 19. EX. 12" FLARED END SECTION
INV: 684.66
STA: 18+61 O/S: 14.0'L | 24. EX. 12" FLARED END SECTION
INV: 689.54
STA: 20+61 O/S: 20.1'R | 3. EX. W/M VALVE VAULT
RIM: 695.35 T/P: 689.85
STA: 23+64 O/S: 13.7'L |
| 20. EX. 12" FLARED END SECTION
INV: 685.49
STA: 18+94 O/S: 14.2'L | 25. EX. 12" FLARED END SECTION
INV: 690.78
STA: 21+03 O/S: 20.4'R | 1. EXISTING SANITARY MANHOLE
RIM: 692.47 INV: 681.85
STA: 21+16 O/S: 18.6'R |
| 21. EX. 6" FLARED END SECTION
INV: 686.96
STA: 19+38 O/S: 14.5'L | 26. EX. 12" FLARED END SECTION
INV: 692.98
STA: 21+49 O/S: 14.8'L | 2. EXISTING SANITARY MANHOLE
RIM: 695.98 INV: 681.03
STA: 22+98 O/S: 21.1'R |
| 22. EX. 6" FLARED END SECTION
INV: 687.23
STA: 19+52 O/S: 14.4'L | 27. EX. STORM MANHOLE
RIM: 695.76 INV: 694.16
STA: 22+42 O/S: 18.4'L | |
| 23. EX. 10" FLARED END SECTION
INV: 688.12
STA: 16+64 O/S: 25.5'R | | |

- DRAINAGE & UTILITY PLAN LEGEND**
- EXISTING SANITARY STRUCTURE
 - EXISTING SANITARY SEWER
 - EXISTING WATERMAIN STRUCTURE
 - EXISTING WATERMAIN
 - EXISTING STORM SEWER STRUCTURE
 - EXISTING STORM SEWER
 - PROPOSED STORM SEWER STRUCTURE
 - PROPOSED STORM SEWER PIPE
 - PROPOSED STORM SEWER FLARED END SECTION
 - PROPOSED STORM SEWER CATCHBASIN
 - PROPOSED STORM SEWER INLET
 - PROPOSED UTILITY CROSSING

- PLAN & PROFILE LEGEND**
- HOT-MIX ASPHALT SURFACE COURSE, MIX "D", N50
 - HOT-MIX DRIVEWAY PAVEMENT, 3"
 - BRICK DRIVEWAY REMOVAL & REPLACEMENT
 - AGGREGATE SHOULDERS (SPECIAL)
 - HOT-MIX ASPHALT SURFACE REMOVAL - BUTT JOINT
 - PERIMETER EROSION BARRIER

DUFFY LANE



FILE NAME = 8101-057 PR6.dwg	USER NAME = GW3	DESIGNED - DJG	REVISED -	STATE OF ILLINOIS DEPARTMENT OF TRANSPORTATION	PROPOSED PLAN & PROFILE / DRAINAGE AND UTILITIES	F.A. RTE. 1254	SECTION 12-00013-00-RS	COUNTY LAKE	TOTAL SHEETS 32	SHEET NO. 12		
PLOT SCALE = 1:1						SCALE: AS NOTED SHEET NO. 12 OF 32 SHEETS STA. 18+50 TO STA. 24+00						
PLOT DATE = 08.10.2012						CONTRACT # 63751 ILLINOIS FED. AID PROJECT M-4003(095)						