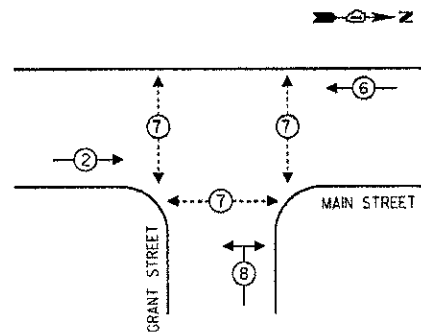


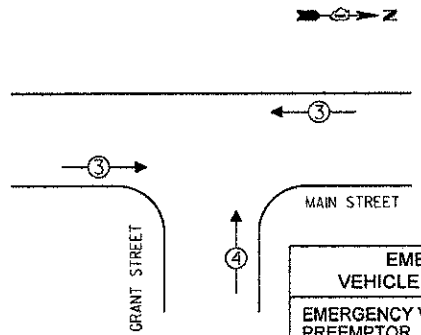
TEMPORARY CONTROLLER SEQUENCE



- LEGEND**
- ① SINGLE ENTRY PHASE
 - ② DUAL ENTRY PHASE
 - ③ OVERLAP
 - ④ PEDESTRIAN PHASE
 - * NUMBER REFERS TO ASSOCIATED PHASE

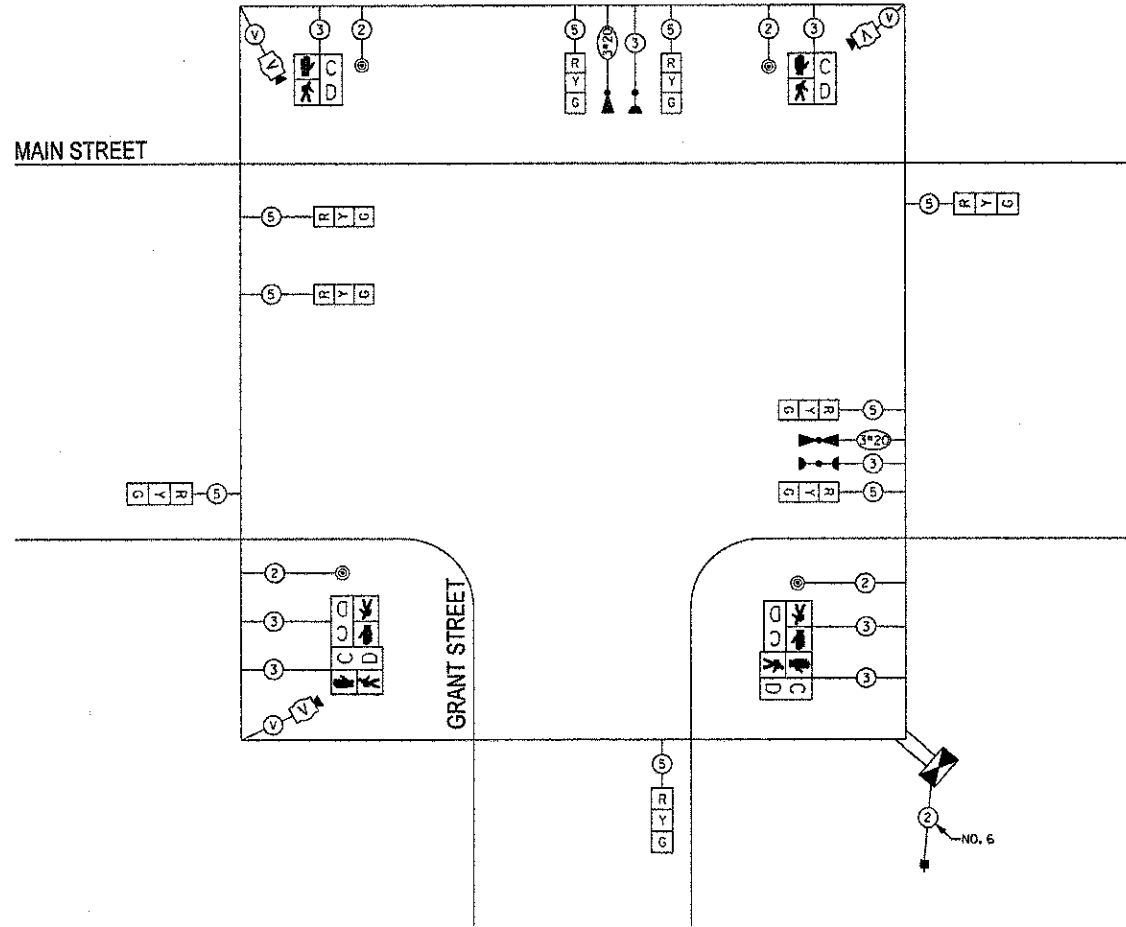
TEMPORARY PHASE DESIGNATION DIAGRAM

TEMPORARY EMERGENCY VEHICLE PREEMPTION SEQUENCE



EMERGENCY VEHICLE PREEMPTORS			
EMERGENCY VEHICLE PREEMPTOR	3	4	
MOVEMENT	←	↑	

ALL INDICATIONS SHALL BE LED



TEMPORARY CABLE PLAN

I.D.O.T. TRAFFIC SIGNAL INSTALLATION ELECTRICAL SERVICE REQUIREMENTS					TOTAL WATTAGE
TYPE	NO. OF LAMPS	INCAND	LED	% OPERATIONS	
SIGNAL (RED)	9	135	17	0.50	76.50
(YELLOW)	9	135	25	0.25	56.25
(GREEN)	9	135	15	0.25	33.75
ARROW		135	12	0.10	
PED. SIGNAL	6	90	25	1.00	150.00
CONTROLLER	1	100	100	1.00	100.00
ILLUM. SIGN		84		0.05	
VIDEO SYSTEM	1	150		1.00	150.00
FLASHER				0.50	
ENERGY COSTS TO:					TOTAL = 566.50
VILLAGE OF DOWNERS GROVE 5101 WALNUT AVENUE DOWNERS GROVE, ILLINOIS 60515					
ENERGY SUPPLY - CONTACT: ????? PHONE: (708) 410-5314 COMPANY: COMED					

THE LIGHT DETECTORS AND LIGHT DETECTOR AMPLIFIER FOR THIS PROJECT SHALL BE MODEL "3M - 262" TO MEET LOCAL FIRE DEPARTMENT REQUIREMENTS.

THE TRAFFIC SIGNAL CONTROL EQUIPMENT FOR THIS PROJECT SHALL BE "ECONOLITE".