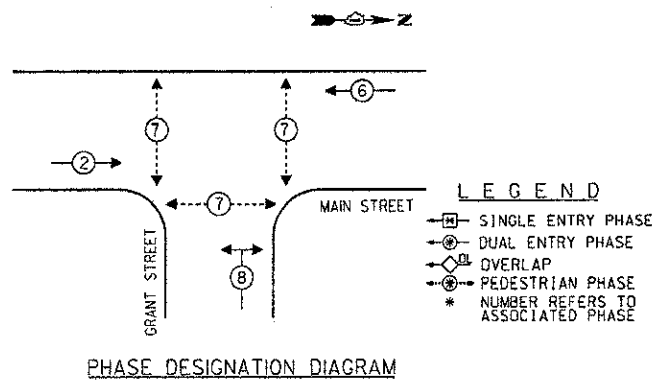
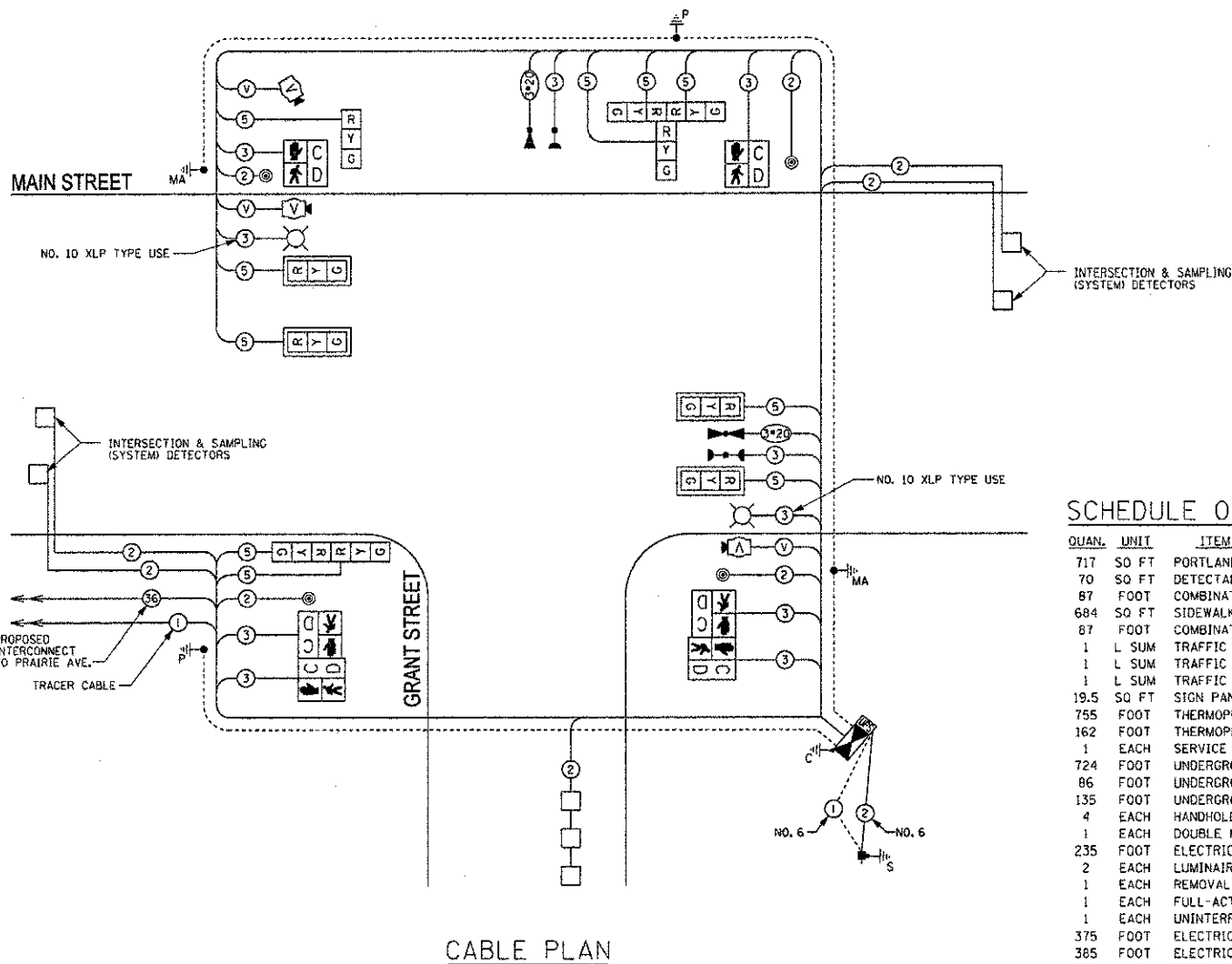
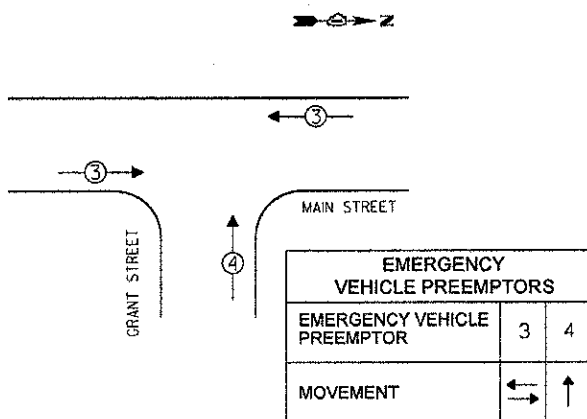


CONTROLLER SEQUENCE



PHASE DESIGNATION DIAGRAM

EMERGENCY VEHICLE PREEMPTION SEQUENCE



SCHEDULE OF QUANTITIES

QUAN.	UNIT	ITEM
717	SQ FT	PORTLAND CEMENT CONCRETE SIDEWALK 5"
70	SQ FT	DETECTABLE WARNINGS
87	FOOT	COMBINATION CURB AND GUTTER REMOVAL
684	SQ FT	SIDEWALK REMOVAL
87	FOOT	COMBINATION CONCRETE CURB AND GUTTER, TYPE B-6.12
1	L SUM	TRAFFIC CONTROL AND PROTECTION, STANDARD 701606
1	L SUM	TRAFFIC CONTROL AND PROTECTION, STANDARD 701701
1	L SUM	TRAFFIC CONTROL AND PROTECTION, STANDARD 701801
19.5	SQ FT	SIGN PANEL - TYPE 1
755	FOOT	THERMOPLASTIC PAVEMENT MARKING-LINE 12"
162	FOOT	THERMOPLASTIC PAVEMENT MARKING-LINE 24"
1	EACH	SERVICE INSTALLATION, POLE MOUNTED
724	FOOT	UNDERGROUND CONDUIT, GALVANIZED STEEL, 2" DIA.
86	FOOT	UNDERGROUND CONDUIT, GALVANIZED STEEL, 3" DIA.
135	FOOT	UNDERGROUND CONDUIT, GALVANIZED STEEL, 4" DIA.
4	EACH	HANDHOLE
1	EACH	DOUBLE HANDHOLE
235	FOOT	ELECTRIC CABLE IN CONDUIT, 600V (XLP-TYPE USE) 3-1/2 NO. 10
2	EACH	LUMINAIRE, SODIUM VAPOR, HORIZONTAL MOUNT, PHOTO-CELL CONTROL, 250 WATT
1	EACH	REMOVAL OF TEMPORARY LIGHTING UNIT
1	EACH	FULL-ACTUATED CONTROLLER AND TYPE IV CABINET
1	EACH	UNINTERRUPTIBLE POWER SUPPLY, SPECIAL
375	FOOT	ELECTRIC CABLE IN CONDUIT, EQUIPMENT GROUNDING CONDUCTOR, NO. 6 IC
385	FOOT	ELECTRIC CABLE IN CONDUIT, SIGNAL NO. 14 2C
735	FOOT	ELECTRIC CABLE IN CONDUIT, SIGNAL NO. 14 3C
1215	FOOT	ELECTRIC CABLE IN CONDUIT, SIGNAL NO. 14 5C
1430	FOOT	ELECTRIC CABLE IN CONDUIT, LEAD-IN, NO. 14 1 PAIR
195	FOOT	ELECTRIC CABLE IN CONDUIT, NO. 20 3/0, TWISTED, SHIELDED
150	FOOT	ELECTRIC CABLE IN CONDUIT, SERVICE, NO. 6 2C
1	EACH	TRAFFIC SIGNAL POST, GALVANIZED STEEL 14 FT.
1	EACH	TRAFFIC SIGNAL POST, GALVANIZED STEEL 18 FT.
2	EACH	STEEL COMBINATION MAST ARM ASSEMBLY AND POLE 20 FT.
8	FOOT	CONCRETE FOUNDATION, TYPE A
4	FOOT	CONCRETE FOUNDATION, TYPE C
20	FOOT	CONCRETE FOUNDATION, TYPE E, 36-INCH DIAMETER
4	EACH	SIGNAL HEAD, LED, 1-FACE, 3-SECTION, MAST ARM MOUNTED
1	EACH	SIGNAL HEAD, LED, 1-FACE, 3-SECTION, BRACKET MOUNTED
1	EACH	SIGNAL HEAD, LED, 2-FACE, 3-SECTION, BRACKET MOUNTED
1	EACH	SIGNAL HEAD, LED, 3-FACE, 3-SECTION, BRACKET MOUNTED
2	EACH	PEDESTRIAN SIGNAL HEAD, LED, 1-FACE, BRACKET MOUNTED WITH COUNTDOWN TIMER
2	EACH	PEDESTRIAN SIGNAL HEAD, LED, 2-FACE, BRACKET MOUNTED WITH COUNTDOWN TIMER
4	EACH	TRAFFIC SIGNAL BACKPLATE
5	EACH	INDUCTIVE LOOP DETECTOR
245	FOOT	DETECTOR LOOP, TYPE I
2	EACH	LIGHT DETECTOR
1	EACH	LIGHT DETECTOR AMPLIFIER
4	EACH	PEDESTRIAN PUSH-BUTTON
1	EACH	TEMPORARY TRAFFIC SIGNAL INSTALLATION
1	EACH	REMOVE EXISTING TRAFFIC SIGNAL EQUIPMENT
3	EACH	REMOVE EXISTING HANDHOLE
1	EACH	REMOVE EXISTING DOUBLE HANDHOLE
4	EACH	REMOVE EXISTING CONCRETE FOUNDATION
1	EACH	VIDEO VEHICLE DETECTION SYSTEM

I.O.G.T.
TRAFFIC SIGNAL INSTALLATION
ELECTRICAL SERVICE REQUIREMENTS

TYPE	NO. OF LAMPS X INCAND	WATTAGE	LED % OPERATIONS	TOTAL WATTAGE
SIGNAL (RED)	10	17	0.50	85.00
(YELLOW)	10	25	0.25	62.50
(GREEN)	10	15	0.25	37.50
ARROW	12	12	0.10	
PEG. SIGNAL	6	25	1.00	150.00
CONTROLLER	1	100	1.00	100.00
ILLUM. SIGN		25	0.05	
LUMINAIRE	2	250	0.50	250.00
VIDEO SYSTEM	1	150	1.00	150.00
FLASHER			0.50	
ENERGY COSTS TO:				TOTAL = 835.00

VILLAGE OF DOWNERS GROVE
5101 WALNUT AVENUE
DOWNERS GROVE, ILLINOIS 60515

ENERGY SUPPLY - CONTACT: ?????
PHONE: (708) 410-5314
COMPANY: COMED

THE LIGHT DETECTORS AND LIGHT DETECTOR AMPLIFIER FOR THIS PROJECT SHALL BE MODEL "3M - 262" TO MEET LOCAL FIRE DEPARTMENT REQUIREMENTS.

THE TRAFFIC SIGNAL CONTROL EQUIPMENT FOR THIS PROJECT SHALL BE "ECONOLITE".