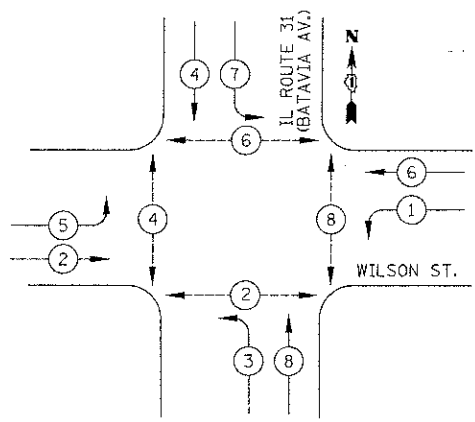
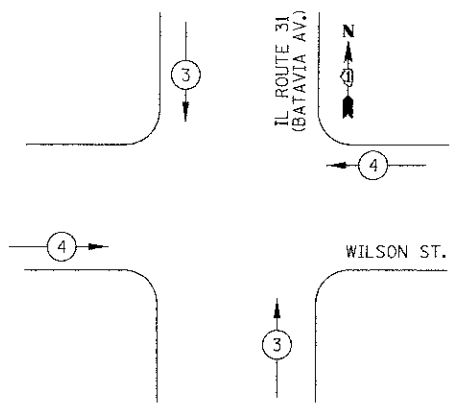


**PROPOSED CONTROLLER SEQUENCE**



**PROPOSED EMERGENCY VEHICLE PREEMPTION SEQUENCE**

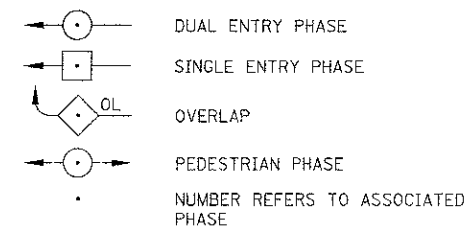


| EMERGENCY VEHICLE PREEMPTORS |   |   |
|------------------------------|---|---|
| EMERGENCY VEHICLE PREEMPTOR  | 3 | 4 |
| MOVEMENT                     | ↑ | → |

**SCHEDULE OF QUANTITIES**

| PAY ITEM  | UNIT  | QNTY. |
|---|-------|-------|
| SIGN PANEL - TYPE 1   | SQ FT | 14    |
| SIGN PANEL - TYPE 2   | SQ FT | 25    |
| SERVICE INSTALLATION - GROUND MOUNTED                                     | EACH  | 1     |
| UNDERGROUND CONDUIT, GALVANIZED STEEL, 2" DIA.                            | FOOT  | 1076  |
| UNDERGROUND CONDUIT, GALVANIZED STEEL, 2 1/2" DIA.                        | FOOT  | 89    |
| UNDERGROUND CONDUIT, GALVANIZED STEEL, 3" DIA.                            | FOOT  | 169   |
| UNDERGROUND CONDUIT, GALVANIZED STEEL, 4" DIA.                            | FOOT  | 452   |
| HANDHOLE  | EACH  | 7     |
| HEAVY-DUTY HANDHOLE   | EACH  | 4     |
| DOUBLE HANDHOLE   | EACH  | 2     |
| PAINT NEW TRAFFIC SIGNAL POST   | EACH  | 7     |
| PAINT NEW COMBINATION MAST ARM ASSEMBLY AND POLE, UNDER 40 FOOT           | EACH  | 3     |
| PAINT NEW COMBINATION MAST ARM ASSEMBLY AND POLE, 40 FOOT AND OVER        | EACH  | 1     |
| TRANSCIVER - FIBER OPTIC  | EACH  | 1     |
| ELECTRIC CABLE IN CONDUIT, SIGNAL NO. 14 2C                               | FOOT  | 1329  |
| ELECTRIC CABLE IN CONDUIT, SIGNAL NO. 14 3C                               | FOOT  | 1718  |
| ELECTRIC CABLE IN CONDUIT, SIGNAL NO. 14 5C                               | FOOT  | 1254  |
| ELECTRIC CABLE IN CONDUIT, SIGNAL NO. 14 7C                               | FOOT  | 1580  |
| ELECTRIC CABLE IN CONDUIT, LEAD-IN, NO. 14 1 PAIR                         | FOOT  | 3606  |
| ELECTRIC CABLE IN CONDUIT, SERVICE NO. 6 2C                               | FOOT  | 20    |
| ELECTRIC CABLE IN CONDUIT, EQUIPMENT GROUNDING CONDUCTOR, NO. 6 1C        | FOOT  | 822   |
| TRAFFIC SIGNAL POST, GALVANIZED STEEL 10 FT.                              | EACH  | 1     |
| TRAFFIC SIGNAL POST, GALVANIZED STEEL, 16 FT.                             | EACH  | 1     |
| CONCRETE FOUNDATION, TYPE A   | FOOT  | 16    |
| CONCRETE FOUNDATION, TYPE C   | FOOT  | 4     |
| CONCRETE FOUNDATION, TYPE E 36-INCH DIAMETER                              | FOOT  | 47    |
| SIGNAL HEAD, LED, 1-FACE, 3-SECTION, MAST-ARM MOUNTED                     | EACH  | 6     |
| SIGNAL HEAD, LED, 1-FACE, 5-SECTION, BRACKET MOUNTED                      | EACH  | 4     |
| SIGNAL HEAD, LED, 1-FACE, 5-SECTION, MAST-ARM MOUNTED                     | EACH  | 4     |
| PEDESTRIAN SIGNAL HEAD, LED, 1-FACE, BRACKET MOUNTED WITH COUNTDOWN TIMER | EACH  | 2     |
| PEDESTRIAN SIGNAL HEAD, LED, 2-FACE, BRACKET MOUNTED WITH COUNTDOWN TIMER | EACH  | 3     |
| TRAFFIC SIGNAL BACKPLATE, LOUVERED, ALUMINUM                              | EACH  | 10    |
| INDUCTIVE LOOP DETECTOR   | EACH  | 13    |
| DETECTOR LOOP, TYPE I   | FOOT  | 790   |
| LIGHT DETECTOR  | EACH  | 2     |
| LIGHT DETECTOR AMPLIFIER  | EACH  | 1     |
| PEDESTRIAN PUSH-BUTTON  | EACH  | 8     |
| TEMPORARY TRAFFIC SIGNAL INSTALLATION                                     | EACH  | 1     |
| REMOVE EXISTING TRAFFIC SIGNAL EQUIPMENT                                  | EACH  | 1     |
| REMOVE EXISTING HANDHOLE  | EACH  | 11    |
| REMOVE EXISTING DOUBLE HANDHOLE   | EACH  | 1     |
| REMOVE EXISTING CONCRETE FOUNDATION                                       | EACH  | 8     |
| EMERGENCY VEHICLE PRIORITY SYSTEM LINE SENSOR CABLE, NO. 20 3/C           | FOOT  | 299   |
| FULL-ACTUATED CONTROLLER AND TYPE IV CABINET, SPECIAL                     | EACH  | 1     |
| UNINTERRUPTIBLE POWER SUPPLY, SPECIAL                                     | EACH  | 1     |
| STEEL COMBINATION MAST ARM ASSEMBLY AND POLE 26 FT. (SPECIAL)             | EACH  | 1     |
| STEEL COMBINATION MAST ARM ASSEMBLY AND POLE 28 FT. (SPECIAL)             | EACH  | 1     |
| STEEL COMBINATION MAST ARM ASSEMBLY AND POLE 36 FT. (SPECIAL)             | EACH  | 1     |
| STEEL COMBINATION MAST ARM ASSEMBLY AND POLE 55 FT. (SPECIAL)             | EACH  | 1     |
| TEMPORARY TRAFFIC SIGNAL TIMING   | EACH  | 1     |
| PEDESTRIAN PUSHBUTTON POST, TYPE A  | EACH  | 2     |

**LEGEND**



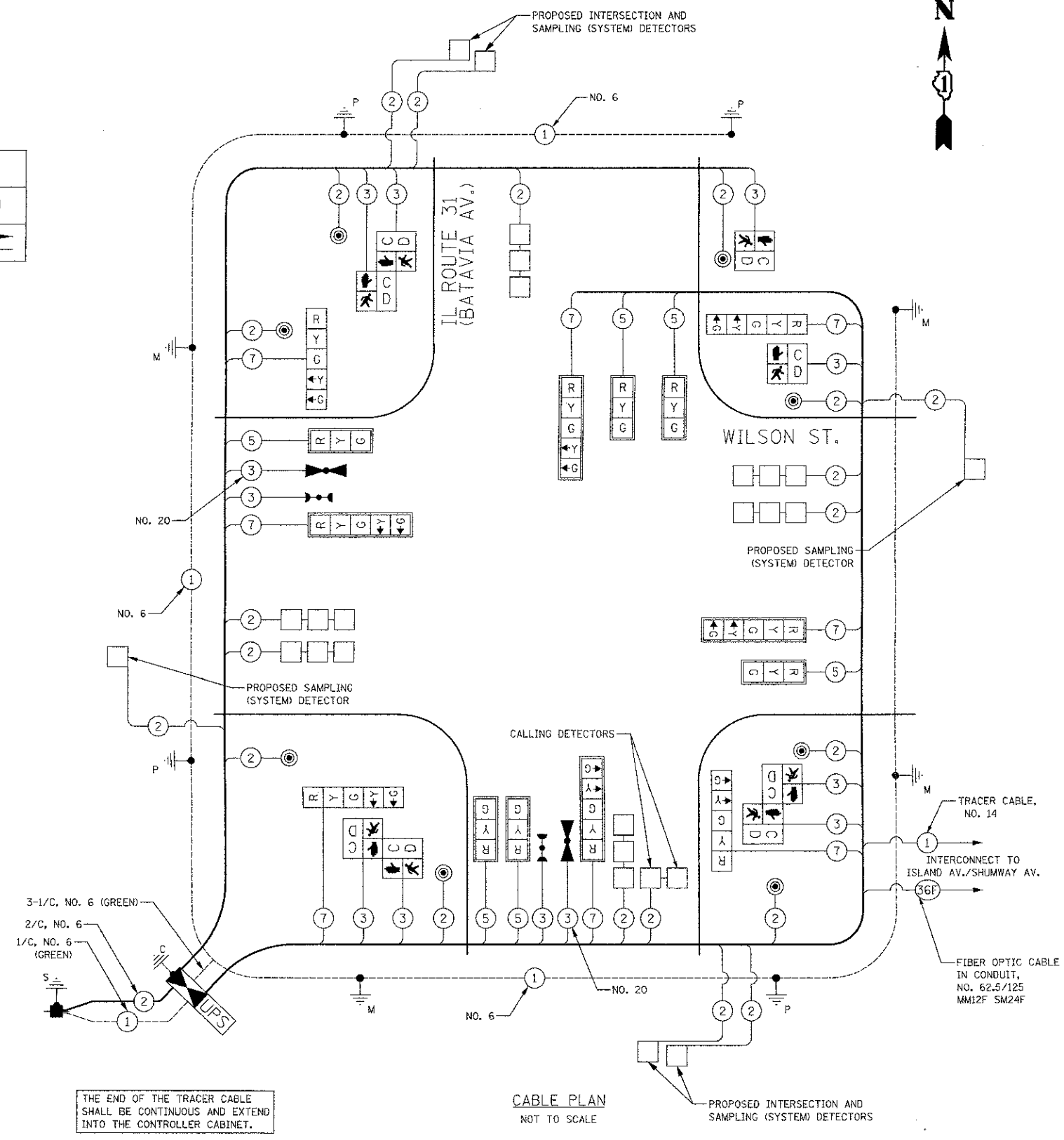
**PHASE DESIGNATION DIAGRAM**

NOTE: PHASES 4 AND 8 SHALL BE PLACED IN RECALL DURING NON-PEAK HOURS.

| I.D.O.T. TRAFFIC SIGNAL INSTALLATION ELECTRICAL SERVICE REQUIREMENTS |           |         |     |             | TOTAL WATTAGE |
|--|-----------|---------|-----|-------------|---------------|
| TYPE   | NO. LAMPS | INCAND. | LED | % OPERATION |               |
| SIGNAL (RED)   | 14        |         | 17  | 0.50        | 119           |
| (YELLOW)   | 14        |         | 25  | 0.25        | 88            |
| (GREEN)  | 14        |         | 15  | 0.25        | 53            |
| ARROW  | 16        |         | 12  | 0.10        | 19            |
| PED. SIGNAL  | 8         |         | 25  | 1.00        | 200           |
| CONTROLLER   | 1         |         | 100 | 1.00        | 100           |
| FLASHER  |           |         |     | 0.50        |               |
| TOTAL =  |           |         |     |             | 578           |

ENERGY COSTS TO: ILLINOIS DEPARTMENT OF TRANSPORTATION  
201 WEST CENTER COURT  
SCHAUMBURG, IL 60196-1096

ENERGY SUPPLY: CONTACT: ELECTRIC DEPARTMENT  
PHONE: (630) 454-2350  
COMPANY: CITY OF BATAVIA



THE END OF THE TRACER CABLE SHALL BE CONTINUOUS AND EXTEND INTO THE CONTROLLER CABINET.

RESTORATION OF WORK AREA.  
RESTORATION OF THE TRAFFIC SIGNAL WORK AREA SHALL BE INCIDENTAL TO THE RELATED PAY ITEM SUCH AS FOUNDATION, CONDUIT, HANDHOLE, TRENCH AND BACKFILL, ETC., AND NO EXTRA COMPENSATION SHALL BE ALLOWED. ALL ROADWAY SURFACES SUCH AS SHOULDER, MEDIAN, SIDEWALKS, PAVEMENT, ETC. SHALL BE REPLACED IN KIND. ALL DAMAGE TO MOWED LAWNS SHALL BE REPLACED WITH AN APPROVED SALT TOLERANT SOD, AND ALL DAMAGE TO UNMOWED FIELDS SHALL BE SEEDING IN ACCORDANCE WITH STANDARD SPECIFICATIONS 252 AND 250 RESPECTIVELY.

NOTE: THE TRAFFIC SIGNAL CONTROLLER EQUIPMENT FOR THIS PROJECT SHALL BE "ECONOLITE" TO MATCH THE EXISTING ADJACENT SYSTEM.



|                             |                   |           |
|-----------------------------|-------------------|-----------|
| USER NAME = brd             | DESIGNED - BRD    | REVISED - |
| PLOT SCALE = 20,000' / 1" = | DRAWN - OJT       | REVISED - |
| PLOT DATE = 11/28/2012      | CHECKED - JJE     | REVISED - |
|                             | DATE - 10/22/2012 | REVISED - |

**STATE OF ILLINOIS  
DEPARTMENT OF TRANSPORTATION**

**CABLE PLAN, SEQUENCE OF OPERATION, EMERGENCY VEHICLE PREEMPTION SEQUENCE & SCHEDULE OF QUANTITIES**  
WILSON STREET AT IL ROUTE 31 (BATAVIA AVENUE)

NOT TO SCALE SHEET NO. 1 OF 1 SHEETS STA. TO STA.

|   |                        |             |                 |              |
|---|------------------------|-------------|-----------------|--------------|
| F.A.U. RTE. 1441                                | SECTION 12-00073-01-TL | COUNTY KANE | TOTAL SHEETS 88 | SHEET NO. 41 |
| CONTRACT NO. 63763                              |                        |             |                 |              |
| FED. ROAD DIST. NO. 1 ILLINOIS FED. AID PROJECT |                        |             |                 |              |