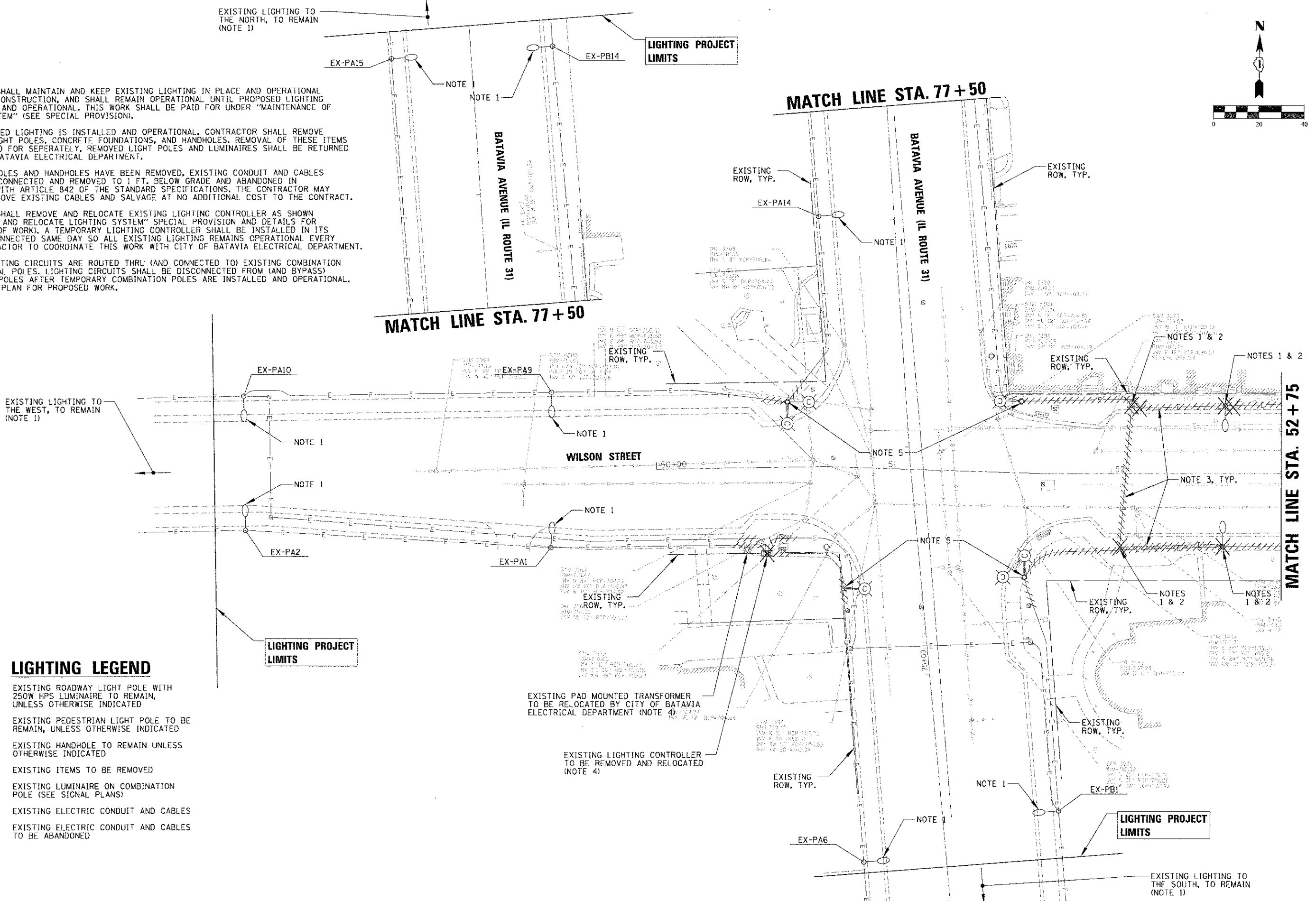


**NOTES:**

1. CONTRACTOR SHALL MAINTAIN AND KEEP EXISTING LIGHTING IN PLACE AND OPERATIONAL THROUGHOUT CONSTRUCTION, AND SHALL REMAIN OPERATIONAL UNTIL PROPOSED LIGHTING IS INSTALLED AND OPERATIONAL. THIS WORK SHALL BE PAID FOR UNDER "MAINTENANCE OF LIGHTING SYSTEM" (SEE SPECIAL PROVISION).
2. AFTER PROPOSED LIGHTING IS INSTALLED AND OPERATIONAL, CONTRACTOR SHALL REMOVE IDENTIFIED LIGHT POLES, CONCRETE FOUNDATIONS, AND HANDHOLES. REMOVAL OF THESE ITEMS SHALL BE PAID FOR SEPARATELY. REMOVED LIGHT POLES AND LUMINAIRES SHALL BE RETURNED TO CITY OF BATAVIA ELECTRICAL DEPARTMENT.
3. AFTER LIGHTPOLES AND HANDHOLES HAVE BEEN REMOVED, EXISTING CONDUIT AND CABLES SHALL BE DISCONNECTED AND REMOVED TO 1 FT. BELOW GRADE AND ABANDONED IN ACCORDANCE WITH ARTICLE B42 OF THE STANDARD SPECIFICATIONS. THE CONTRACTOR MAY ELECT TO REMOVE EXISTING CABLES AND SALVAGE AT NO ADDITIONAL COST TO THE CONTRACT.
4. CONTRACTOR SHALL REMOVE AND RELOCATE EXISTING LIGHTING CONTROLLER AS SHOWN (SEE "REMOVE AND RELOCATE LIGHTING SYSTEM" SPECIAL PROVISION AND DETAILS FOR DESCRIPTION OF WORK). A TEMPORARY LIGHTING CONTROLLER SHALL BE INSTALLED IN ITS PLACE AND CONNECTED SAME DAY SO ALL EXISTING LIGHTING REMAINS OPERATIONAL EVERY NIGHT. CONTRACTOR TO COORDINATE THIS WORK WITH CITY OF BATAVIA ELECTRICAL DEPARTMENT.
5. EXISTING LIGHTING CIRCUITS ARE ROUTED THRU (AND CONNECTED TO) EXISTING COMBINATION TRAFFIC SIGNAL POLES. LIGHTING CIRCUITS SHALL BE DISCONNECTED FROM (AND BYPASS) COMBINATION POLES AFTER TEMPORARY COMBINATION POLES ARE INSTALLED AND OPERATIONAL. SEE LIGHTING PLAN FOR PROPOSED WORK.



**LIGHTING LEGEND**

- EXISTING ROADWAY LIGHT POLE WITH 250W HPS LUMINAIRE TO REMAIN, UNLESS OTHERWISE INDICATED
- EXISTING PEDESTRIAN LIGHT POLE TO BE REMOVED, UNLESS OTHERWISE INDICATED
- EXISTING HANDHOLE TO REMAIN UNLESS OTHERWISE INDICATED
- EXISTING ITEMS TO BE REMOVED
- EXISTING LUMINAIRE ON COMBINATION POLE (SEE SIGNAL PLANS)
- EXISTING ELECTRIC CONDUIT AND CABLES
- EXISTING ELECTRIC CONDUIT AND CABLES TO BE ABANDONED

**LIGHTING PROJECT LIMITS**

**LIGHTING PROJECT LIMITS**

**MATCH LINE STA. 52+75**

**STATE OF ILLINOIS  
DEPARTMENT OF TRANSPORTATION**

**ROADWAY LIGHTING REMOVAL AND RELOCATION PLAN (1 OF 3)  
WILSON STREET**

F.A.U. RTE.	SECTION	COUNTY	TOTAL SHEETS	SHEET NO.
1441	12-00073-01-1L	KANE	88	60
CONTRACT NO. 63763			ILLINOIS FED. AID PROJECT	

<b>CHRISTOPHER B. BURKE</b> ENGINEERING, LTD. 9575 W. Higgins Road, Suite 600 Rosemont, Illinois 60018 (847) 823-0500	USER NAME = kbatdwn	DESIGNED <i>AJD</i>	REVISED -
	PLT/SCALE = 22'	DRAWN <i>KWB</i>	REVISED -
	PLT/DATE = 10/22/2012	CHECKED <i>AJD</i>	REVISED -
		DATE <i>10/22/2012</i>	REVISED -

NE:\BATAVIA\110219\_09001\msh\NREM\110219\B001.CLSHT