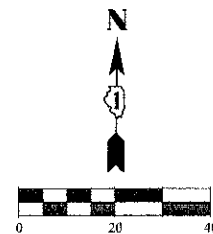


NOTES:

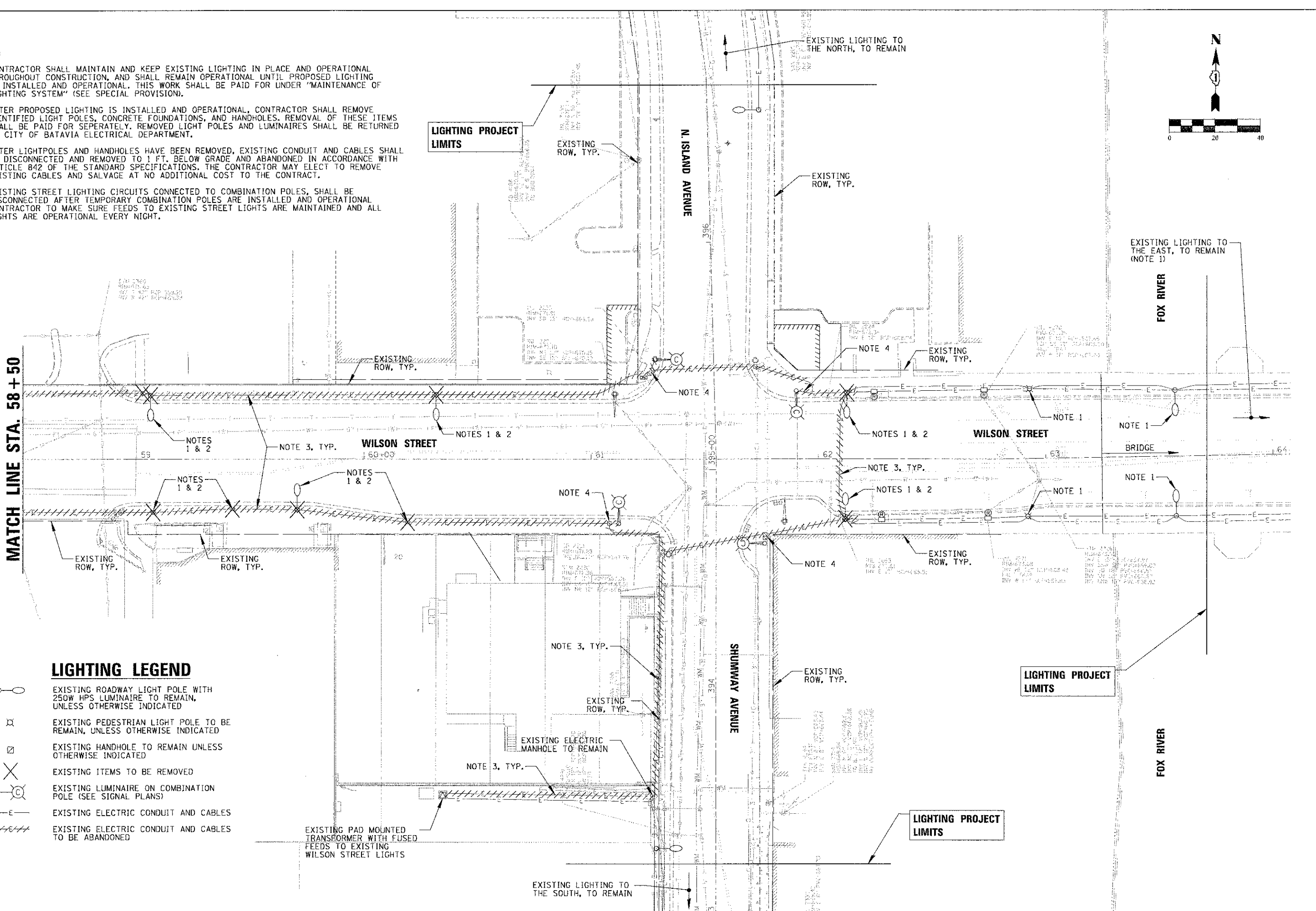
1. CONTRACTOR SHALL MAINTAIN AND KEEP EXISTING LIGHTING IN PLACE AND OPERATIONAL THROUGHOUT CONSTRUCTION, AND SHALL REMAIN OPERATIONAL UNTIL PROPOSED LIGHTING IS INSTALLED AND OPERATIONAL. THIS WORK SHALL BE PAID FOR UNDER "MAINTENANCE OF LIGHTING SYSTEM" (SEE SPECIAL PROVISION).
2. AFTER PROPOSED LIGHTING IS INSTALLED AND OPERATIONAL, CONTRACTOR SHALL REMOVE IDENTIFIED LIGHT POLES, CONCRETE FOUNDATIONS, AND HANDHOLES. REMOVAL OF THESE ITEMS SHALL BE PAID FOR SEPARATELY. REMOVED LIGHT POLES AND LUMINAIRES SHALL BE RETURNED TO CITY OF BATAVIA ELECTRICAL DEPARTMENT.
3. AFTER LIGHTPOLES AND HANDHOLES HAVE BEEN REMOVED, EXISTING CONDUIT AND CABLES SHALL BE DISCONNECTED AND REMOVED TO 1 FT. BELOW GRADE AND ABANDONED IN ACCORDANCE WITH ARTICLE 842 OF THE STANDARD SPECIFICATIONS. THE CONTRACTOR MAY ELECT TO REMOVE EXISTING CABLES AND SALVAGE AT NO ADDITIONAL COST TO THE CONTRACT.
4. EXISTING STREET LIGHTING CIRCUITS CONNECTED TO COMBINATION POLES, SHALL BE DISCONNECTED AFTER TEMPORARY COMBINATION POLES ARE INSTALLED AND OPERATIONAL. CONTRACTOR TO MAKE SURE FEEDS TO EXISTING STREET LIGHTS ARE MAINTAINED AND ALL LIGHTS ARE OPERATIONAL EVERY NIGHT.



MATCH LINE STA. 58+50

**LIGHTING LEGEND**

	EXISTING ROADWAY LIGHT POLE WITH 250W HPS LUMINAIRE TO REMAIN, UNLESS OTHERWISE INDICATED
	EXISTING PEDESTRIAN LIGHT POLE TO BE REMAIN, UNLESS OTHERWISE INDICATED
	EXISTING HANDHOLE TO REMAIN UNLESS OTHERWISE INDICATED
	EXISTING ITEMS TO BE REMOVED
	EXISTING LUMINAIRE ON COMBINATION POLE (SEE SIGNAL PLANS)
	EXISTING ELECTRIC CONDUIT AND CABLES
	EXISTING ELECTRIC CONDUIT AND CABLES TO BE ABANDONED



LIGHTING PROJECT LIMITS

LIGHTING PROJECT LIMITS

<p><b>CHRISTOPHER B. BURKE</b> ENGINEERING, LTD. 9578 W. Higgins Road, Suite 600 Rosemont, Illinois 60018 (847) 823-0500</p>	USER NAME = xkaldwin	DESIGNED <i>AJD</i>	REVISED -	<p align="center"><b>STATE OF ILLINOIS</b> <b>DEPARTMENT OF TRANSPORTATION</b></p>	<p align="center"><b>ROADWAY LIGHTING REMOVAL AND RELOCATION PLAN (3 OF 3)</b> <b>WILSON STREET</b></p>	F.A.U. RTE. 1441	SECTION 12-C0073-01-TL	COUNTY KANE	TOTAL SHEETS: NO. 88	SHEET 62
	PLOT SCALE = 28'	CHECKED <i>AJD</i>	REVISED -			SCALE: 1"=20'	SHEET OF 88 SHEETS	STA. TO STA.	CONTRACT NO. 63763	
	PLOT DATE = 12/22/2012	DATE 10/22/2012	REVISED -							