

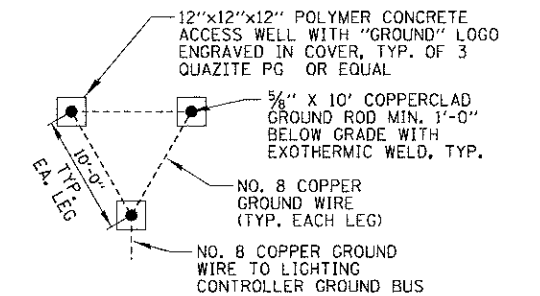
ITEM	SPECIFICATION	MANUFACTURER/MODEL NO. OR EQUAL
① MAIN CIRCUIT BREAKER	100 AMPERE, 2P, 240 V RATING, 22K AIC (NOTE 3)	SIEMENS NO. ED42B100
② LAMPHOLDER CIRCUIT BREAKER	20 AMPERE, 1P, 120 V RATING, 22K AIC	SIEMENS NO. ED41B020
③ PHOTOELECTRIC CONTROL CIRCUIT BREAKER	15 AMPERE, 1P, 120 V RATING, 22K AIC	SIEMENS NO. ED41B015
④ AUXILIARY RELAY	120 V OPERATED DPDT 60 HZ COIL 2 NO & 2 NC CONTACTS	MAGNECRAFT NO. 389FXBXC1-120A
⑤ CABINET RECEPTACLE AND BOX	COMMERCIAL GRADE GFCI 20A/120V, MOUNTED IN A WEATHERPROOF CAST ALUMINUM SINGLE GANG BOX WITH WEATHERPROOF COVER	RECEPTACLE: LEVITON NO. 8899, BOX: APPLETON NO. WSM150 COVER: APPLETON NO. WHG1
⑥ CABINET LIGHT AND BOX	120V WEATHERPROOF LAMPHOLDER MOUNTED IN A CAST ALUMINUM BOX & EXT. GRADE 100W LAMP	LIGHT & BOX: RAB NO. VX100DG
⑦ CONTACTOR	100 AMPERE, 2 POLE, 120 V COIL, MECH HELD	SQUARE D NO. 8903 500 10 V02
⑧ BRANCH LINE CIRCUIT BREAKERS	14 - 30 AMPERE, 1P, 120 V RATING, 22K AIC	SIEMENS NO. ED41B030
⑨ POWER DISTRIBUTION BLOCK	600 VOLT, INSULATED, SIZE AS REQUIRED	MARATHON
⑩ SERVICE CABLES	3-600V (XLP-TYPE USE) NO. 2	N/A
⑪ LAMPHOLDER WIRE	2-600V MTW NO. 12	N/A
⑫ CONTROL WIRE	2-600V MTW NO. 12	N/A
⑬ SURGE ARRESTOR	10 K AMPERE RATING	SQUARE D NO. SDSA 1175
⑭ PHOTOELECTRIC CONTROL WIRE	3-600V MTW NO. 12	N/A
⑮ DOOR SWITCH	20A/120V, DOOR MOUNTED SNAP ACTION TYPE PLUNGER SWITCH	OMRON NO. A-20G0-K
⑯ HAND-AUTO-OFF CONTROL SWITCH	20 A, 3 POS. MTD IN CAST ALUM. ENCLOSURE	SQUARE D NO. 9001 KYK 111
⑰ PHOTOCELL	120V, MTD. ON CABINET, DELAY TYPE, SPST-NC	FISHER PIERCE NO. FPFA-105
⑱ BACK PANEL	1/2" THICK SOLID PHENOLIC LAMINATE	ARBORON
⑲ IRRIGATION CIRCUIT BREAKER	15 AMPERE, 1P, 120V RATING, 22KAIC	SIEMENS NO. ED41B015

- NOTES:
- ALL ITEMS LISTED IN LIGHTING CONTROLLER COMPONENT SCHEDULE SHALL BE CONSIDERED INCIDENTAL TO THE PRICE BID FOR "LIGHTING CONTROLLER" INCLUDING CABINET AND FOUNDATION.
 - THE LIGHTING CONTROLLER TOGETHER WITH ALL OF ITS COMPONENTS SHALL BE UL LISTED AS AN "ENCLOSED INDUSTRIAL CONTROL PANEL" UNDER UL508A.
 - CONNECTION OF SURGE ARRESTOR TO LINE SIDE OF MAIN CIRCUIT BREAKER SHALL NOT BE "DOUBLE LUGGED."
 - ALL WIRES IN CABINET SHALL BE LABELED AT EACH END WITH BRADY TYPE MARKERS.
 - ALL SWITCHES AND CONTROLS SHALL BE IDENTIFIED USING TWO COLOR ENGRAVED NAMEPLATES.

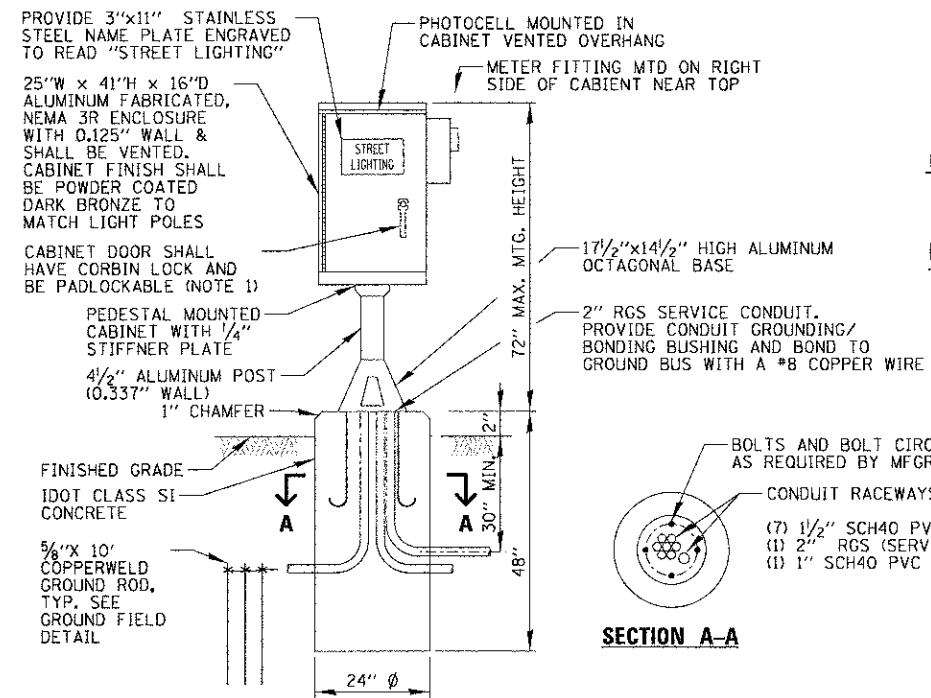
LIGHTING CONTROLLER COMPONENT SCHEDULE

CIRCUIT ID	250W RD LUMINAIRE (288W)	100W PED LUMINAIRE (130W)	FESTOON RECEIPT (144W)	GRND MTD RECEIPT (240W)	50W PED LUMINAIRE (75W)	UNDERPASS LUMINAIRE (75W)	LED BENCH LUMINAIRE (20W)	TOTAL CIRCUIT LOAD (WATTS)	
	QUANTITY	QUANTITY	QUANTITY	QUANTITY	QUANTITY	QUANTITY	QUANTITY	(WATTS)	AMPS (VOLTS)
A	-	6	-	-	-	-	-	780 W	6.5 A (120 V)
B	6	-	-	-	-	-	-	1728 W	14.4 A (120 V)
C	-	6	-	-	-	-	-	780 W	6.5 A (120 V)
D	6	-	-	-	-	-	-	1728 W	14.4 A (120 V)
E	2	2	2	2	1	2	6	1949 W	16.2 A (120 V)
F	2	2	2	2	2	3	6	2099 W	17.5 A (120 V)
G	-	-	3	6	-	-	-	1872 W	15.6 A (120 V)
H	-	-	3	6	-	-	-	1872 W	15.6 A (120 V)
I	-	-	3	3	-	-	-	1152 W	9.6 A (120 V)
J	-	-	3	2	-	-	-	912 W	7.6 A (120 V)
TOTAL	16	16	16	21	3	5	12	14,872 W	62.0 A (240 V)

LIGHTING CONTROLLER CIRCUIT LOADS



- NOTES:
- ACCESS WELLS SHALL BE INCLUDED IN THE LIGHTING CONTROLLER PAY ITEM.
- ### GROUND FIELD DETAIL (TYP.)
- N.T.S.



- NOTES:
- ITEMS SHOWN ABOVE INCLUDING CABINET, CONCRETE FOUNDATION SHALL BE INCLUDED IN THE LIGHTING CONTROLLER PAY ITEM, EXCEPT FOR THE HORIZONTAL PORTION OF SERVICE CONDUIT & WIRE WHICH SHALL BE PAID SEPARATELY.
 - A 30"Wx24"Dx5" THICK CONCRETE WORK PAD SHALL BE PROVIDED IN FRONT OF THE CABINET. TOP OF PAD SHALL BE 1" ABOVE GRADE AND HAVE A 3/4" CHAMFER ALL AROUND.
 - ALL EXTERIOR CABINET HARDWARE SHALL BE STAINLESS STEEL.

LIGHTING CONTROLLER CABINET AND FOUNDATION

N.T.S.

NOTE:

ALL CONDUCTORS IN THE UNIT DUCT RUNS SHALL HAVE INDIVIDUALLY COLOR CODED INSULATION THROUGHOUT THE ENTIRE LENGTH OF THE CONDUCTOR. THE COLOR IDENTIFICATION FOR THE SYSTEM GROUND SHALL BE GREEN.

