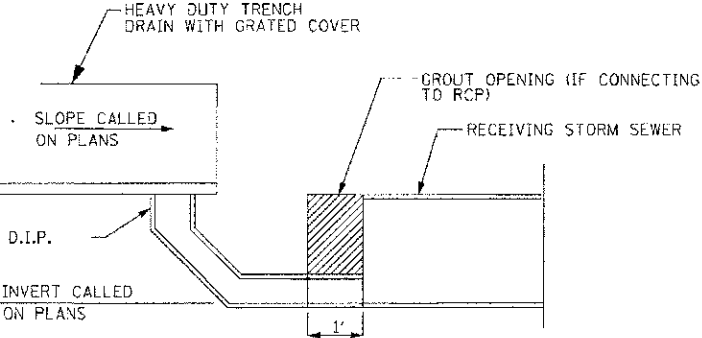
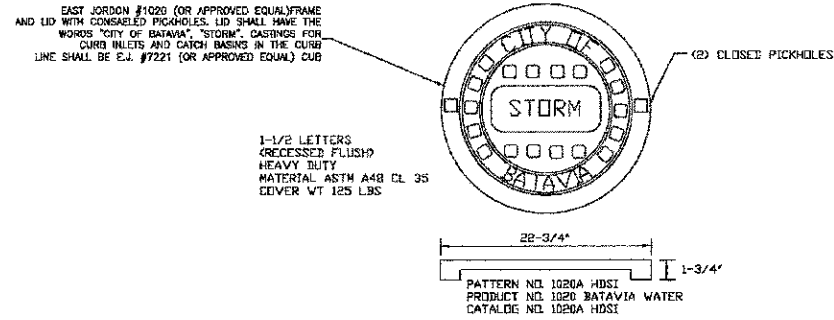
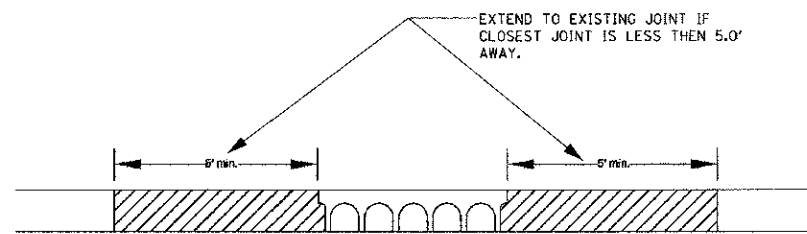


### MANHOLE LID DETAIL

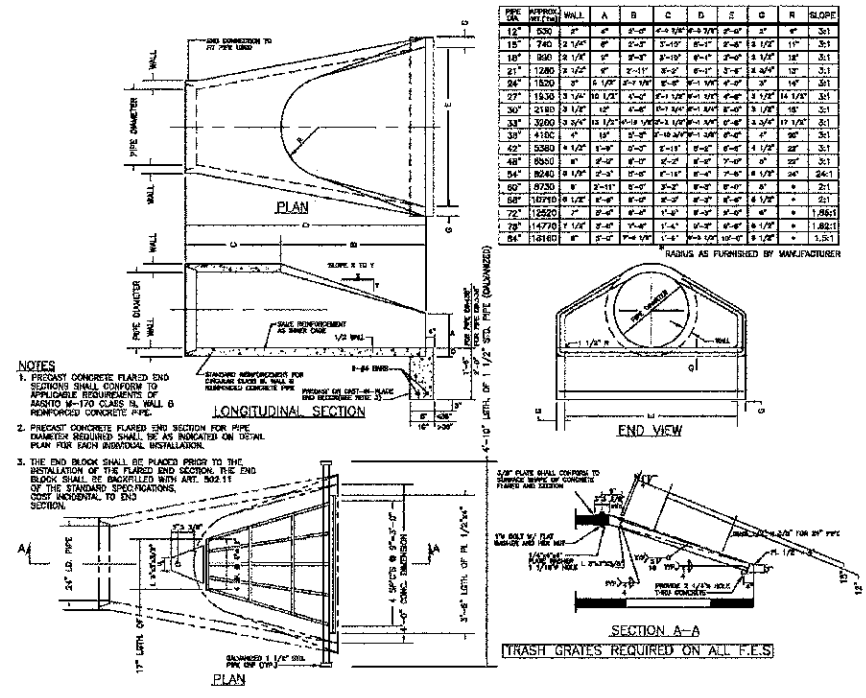


NOTE: CONNECTION TO DI STORM SEWER SHALL BE MADE USING APPROPRIATE REDUCING FITTINGS

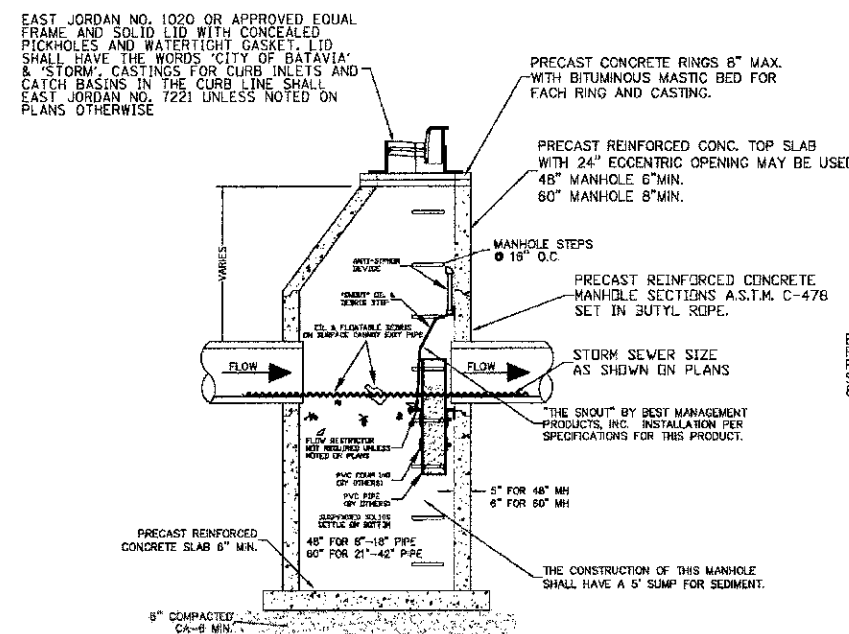
### CURB REMOVAL AND REPLACEMENT AT INLETS



### FLARED END SECTION

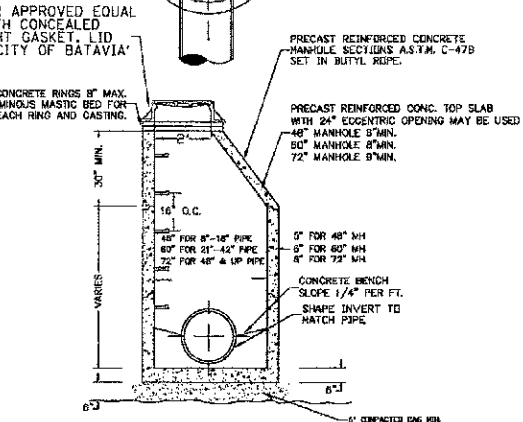


### TRENCH DRAIN OUTLET DETAIL

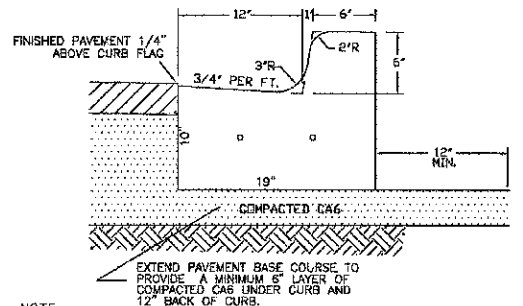


NOTES:  
 A. CATCH BASIN-GRIT OIL STOPS ON ALL STORM SEWERS 42" AND SMALLER WITH 'THE SNOOT' INSTALLED AS SHOWN ABOVE.  
 B. ALL STORM SEWERS SHALL BE R.C.P.  
 C. ALL CURB INLETS SHALL BE CATCH BASIN-GRIT OIL STOPS AS WELL AS THE DOWNSTREAM OF EACH PAIR OF CURB INLETS.

### CATCH BASIN-GRIT OIL STOPS

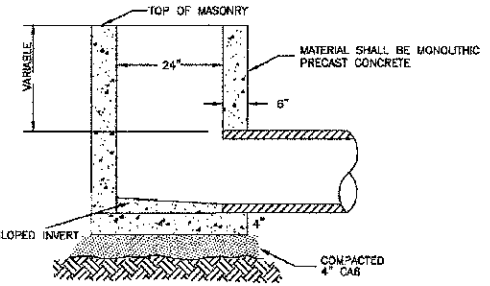


### STORM SEWER MANHOLE



NOTE:  
 2 - NO. 5 REBARS CONTINUOUS AND 2 - 3/4" DOWEL BARS WITH GREASE CAPS AT EACH EXPANSION JOINT. PLACE 3/4" EXPANSION JOINTS AT 10' INTERVALS, 5' - 10' EITHER SIDE OF STRUCTURES, P.C.'S AND RADIUS POINTS. SAW CONTRACTION JOINTS EVERY 10' BETWEEN EXPANSIONS TO THE DEPTH OF 3" WITHIN 24 HOURS OF PLACEMENT.

### B6.12 CURB & GUTTER



### INLET TYPE A

PRE-CAST REINFORCED CONCRETE RISER RINGS SHALL COMPLY WITH ASTM C-39. ALL JOINTS BETWEEN PRE-CAST ELEMENTS, ADJUSTING RINGS AND MANHOLE FRAMES SHALL BE SET IN PLACE WITH A BUTYL RUBBER JOINT SEALANT. USE EAST JORDAN NO. 7221-M FOR FRAME & GRATE OR APPROVED EQUAL. IN CURB LINE INLETS & MANHOLES. USE EAST JORDAN NO. 9527 GRATE OR APPROVED EQUAL FOR ALL INLETS IN NON-PAVED LOCATIONS. USE EAST JORDAN NO. 1020 FRAME & LID OR APPROVED EQUAL FOR ALL JUNCTION BOXES.