

**BM#1** BENCHMARK #1  
 STA. 211+81.10, 24.51' RT  
 N. 1,882,934.58 - E. 1,120,423.80

**BM#2** BENCHMARK #2  
 STA. 24+12.61, 2.40' RT  
 N. 1,884,369.82 - E. 1,120,430.70

**A** PROPOSED  $\phi$  GOLFVIEW AVENUE  
 STA. 10+00.00, 0.00' RT  
 N. 1,882,959.21 - E. 1,120,454.93

**B** PROPOSED  $\phi$  ZOO NORTH LOT  
 STA. 100+00.00, 0.00' RT  
 N. 1,883,391.77 - E. 1,120,442.09

NOTE:  
 COORDINATES ARE BASED ON THE PUBLISHED METRIC COORDINATE VALUES AT FOUND N.G.S. MONUMENT "ME1780". A 1/2 INCH COPPER BOLT SET IN THE TOP OF A CONCRETE POST AND COVERED WITH A 10 INCH SQUARE CAST IRON BOX LOCATED AT THE SW CORNER OF NEVA AVENUE AND 56TH STREET, 9 1/2 FEET EAST OF THE WEST EDGE OF THE WEST SIDE WALK ON NEVA AVENUE, 8 1/2 FEET NORTH OF THE SOUTH EDGE OF THE SOUTH SIDEWALK ON 56TH STREET, ABOUT LEVEL WITH THE SIDEWALK. ELEVATION = 613.89. SURFACE COORDINATES ARE SHOWN IN U.S. SURVEY FEET. ELEVATIONS ARE ON NAVD 88 DATUM.

| BM # | APPROXIMATE LOCATION   | ELEVATION |
|------|--|-----------|
| 1    | SQUARE CUT IN THE NORTH SIDE OF TRAFFIC SIGNAL BASE LOCATED AT THE SW CORNER OF 31ST STREET AND GOLFVIEW AVENUE  | 619.20    |
| 2    | SQUARE CUT IN THE SE CORNER OF TRAFFIC SIGNAL MANHOLE LOCATED AT THE WEST SIDE OF GOLFVIEW AVENUE AND 1ST AVENUE | 619.86    |

31ST STREET  
 EXISTING  $\phi$  COORDINATE TABLE

| STATION   | NORTHING     | EASTING      |
|-----------|--------------|--------------|
| 207+06.00 | 1,882,944.30 | 1,119,948.31 |
| 212+12.84 | 1,882,959.21 | 1,120,454.93 |
| 216+00.00 | 1,882,971.28 | 1,120,841.90 |

GOLFVIEW AVENUE  
 PROPOSED  $\phi$  COORDINATE TABLE

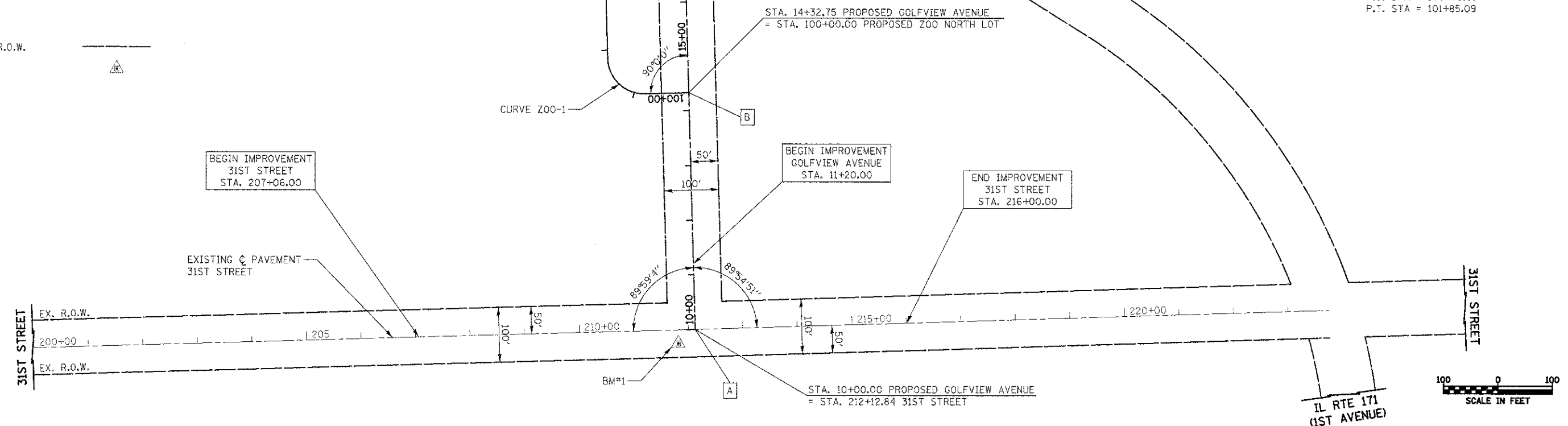
| STATION      | NORTHING     | EASTING      |
|--------------|--------------|--------------|
| 10+00.00     | 1,882,944.30 | 1,119,948.31 |
| 14+32.75     | 1,882,959.21 | 1,120,454.93 |
| 19+10.00     | 1,883,868.81 | 1,120,427.93 |
| 21+19.32(PC) | 1,884,078.04 | 1,120,421.71 |
| 21+97.56(P1) | 1,884,156.24 | 1,120,419.39 |
| 22+75.71(PT) | 1,884,234.37 | 1,120,423.51 |
| 23+46.42(PC) | 1,884,304.98 | 1,120,427.23 |
| 24+37.21(P1) | 1,884,395.64 | 1,120,432.00 |
| 25+27.86(PT) | 1,884,486.35 | 1,120,428.11 |
| 26+14.88     | 1,884,573.29 | 1,120,424.38 |

PROP. CURVE GOLFVIEW-1  
 PI STA. = 21+97.56  
 $\Delta$  = 4° 42' 58" (RT)  
 R = 1,900.00'  
 T = 78.24'  
 L = 156.39'  
 E = 1.61'  
 P.C. STA = 21+19.32  
 P.T. STA = 22+75.71

PROP. CURVE GOLFVIEW-2  
 PI STA. = 24+37.21  
 $\Delta$  = 5° 28' 17" (LT)  
 R = 1,900.00'  
 T = 90.79'  
 L = 181.44'  
 E = 2.17'  
 P.C. STA = 23+46.42  
 P.T. STA = 25+27.86

PROP. CURVE ZOO-1  
 PI STA. = 101+46.85  
 $\Delta$  = 90° 00' 00" (RT)  
 R = 67.00'  
 T = 67.00'  
 L = 105.24'  
 E = 27.75'  
 P.C. STA = 100+79.85  
 P.T. STA = 101+85.09

LEGEND  
 EXISTING R.O.W.   
 BENCHMARK



FILE NAME = ...2563\_A7B\_01.dgn  
 USER NAME = dte  
 DESIGNED - DTE  
 DRAWN - DTE  
 CHECKED - CAB  
 PLOT DATE = 11/9/2012

DESIGNED - DTE  
 DRAWN - DTE  
 CHECKED - CAB  
 DATE - 10/22/2012

STATE OF ILLINOIS  
 DEPARTMENT OF TRANSPORTATION

ALIGNMENT, TIES AND BENCHMARKS  
 SCALE: 1" = 100'  
 SHEET NO. 1 OF 1 SHEETS  
 STA. TO STA.

| F.A.C. RTE. | SECTION        | COUNTY | TOTAL SHEETS | SHEET NO. |
|-------------|----------------|--------|--------------|-----------|
| 3784        | 12-F3000-23-PK | COOK   | 133          | 21        |

CONTRACT NO. 63764  
 (ILLINOIS) FED. AID PROJECT