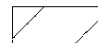



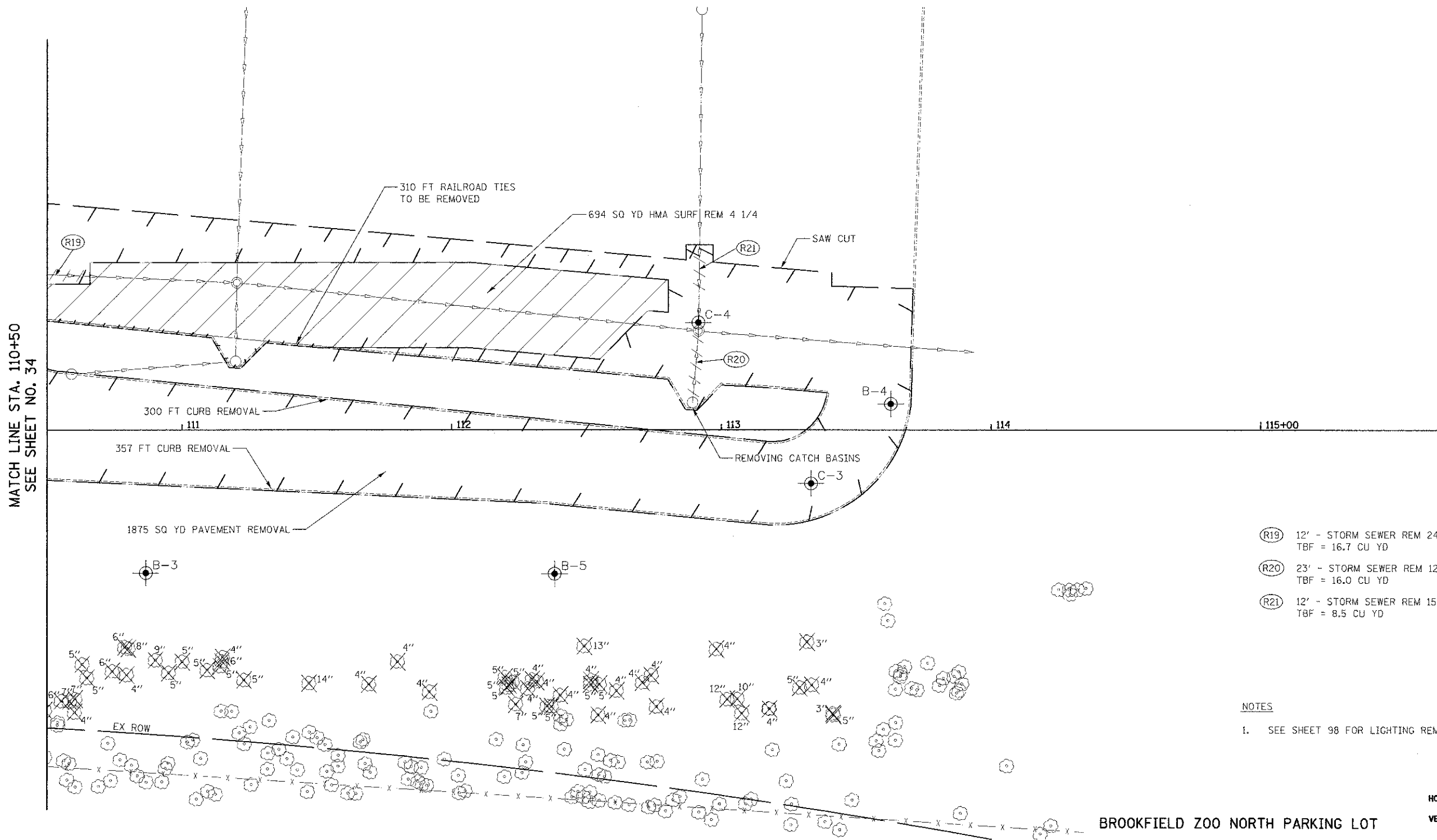


**REMOVAL LEGEND**

-  HMA SURFACE REMOVAL
-  REMOVAL LIMITS
-  PIPE TO BE REMOVED
-  TREE REMOVAL



- (R19) 12' - STORM SEWER REM 24  
TBF = 16.7 CU YD
- (R20) 23' - STORM SEWER REM 12  
TBF = 16.0 CU YD
- (R21) 12' - STORM SEWER REM 15  
TBF = 8.5 CU YD

**NOTES**  
1. SEE SHEET 98 FOR LIGHTING REMOVALS



**BROOKFIELD ZOO NORTH PARKING LOT**

FILE NAME = ...107-Removal\2563_REM_05.dgn	USER NAME = dte	DESIGNED - DTE	REVISED -	<b>STATE OF ILLINOIS DEPARTMENT OF TRANSPORTATION</b>	<b>REMOVAL PLAN</b>	F.A.U. RTE.	SECTION	COUNTY	TOTAL SHEETS	SHEET NO.
PLOT SCALE = 20,0000' / in.	DRAWN - DTE	CHECKED - GAB	REVISED -			3784	12-F3000-23-PK	COOK	133	27
PLOT DATE = 11/26/2012	DATE - 10/22/2012	REVISED -	REVISED -			SCALE: 1" = 20' SHEET NO. 6 OF 6 SHEETS STA. 110+50 TO STA. 113+71		CONTRACT NO. 63764 FED. ROAD DIST. NO. 1 ILLINOIS FED. AID PROJECT		