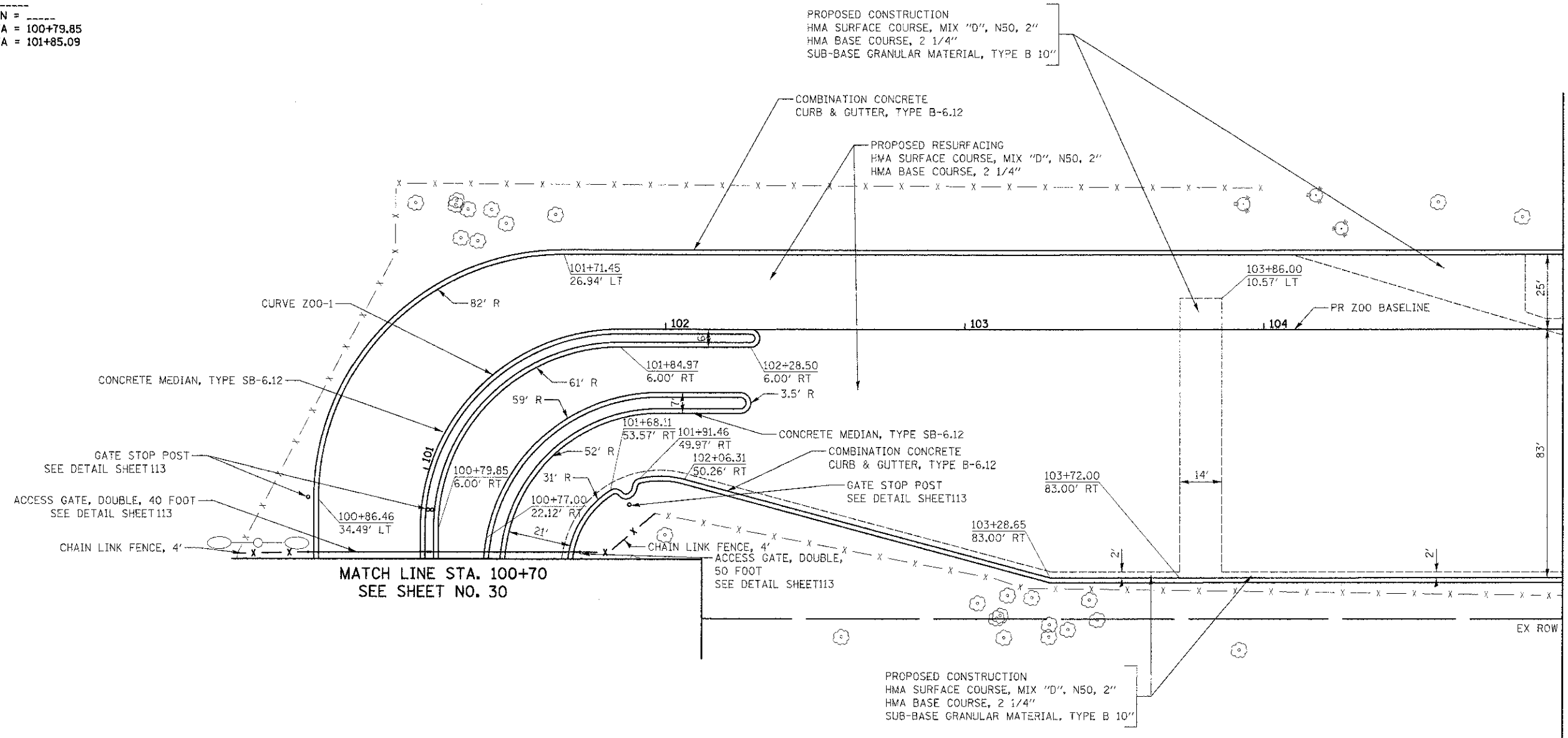


PROP. CURVE Z00-1
 PI STA. = 101+46.85
 $\Delta = 90^\circ 00' 00''$ (RT)
 $D = 85^\circ 30' 58''$
 $R = 67.00'$
 $T = 67.00'$
 $L = 105.24'$
 $E = 27.75'$
 $e =$
 $T.R. =$
 $S.E. RUN =$
 $P.C. STA = 100+79.85$
 $P.T. STA = 101+85.09$



PROPOSED CONSTRUCTION
 HMA SURFACE COURSE, MIX "D", N50, 2"
 HMA BASE COURSE, 2 1/4"
 SUB-BASE GRANULAR MATERIAL, TYPE B 10"

BROOKFIELD ZOO NORTH PARKING LOT



FILE NAME ...2553.LOT_01.dgn	USER NAME dte	DESIGNED - DTE	REVISIONS	STATE OF ILLINOIS DEPARTMENT OF TRANSPORTATION	BROOKFIELD ZOO NORTH PARKING LOT PLANS	F.A.U. RTE. 3784	SECTION 12-F3000-23-PK	COUNTY COOK	TOTAL SHEETS 133	SHEET NO. 33		
PLOT SCALE = 20.0000' / 1" =	CHECKED - GAB	DATE - 10/22/2012	REVISIONS			SCALE: 1" = 20'	SHEET NO. 1 OF 6 SHEETS	STA. 100+75 TO STA. 105+00	CONTRACT NO. 63764			
PLOT DATE = 11/9/2012	DATE - 10/22/2012	REVISIONS	FED. ROAD DIST. NO. 1 ILLINOIS FED. AID PROJECT									