
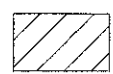
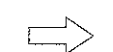



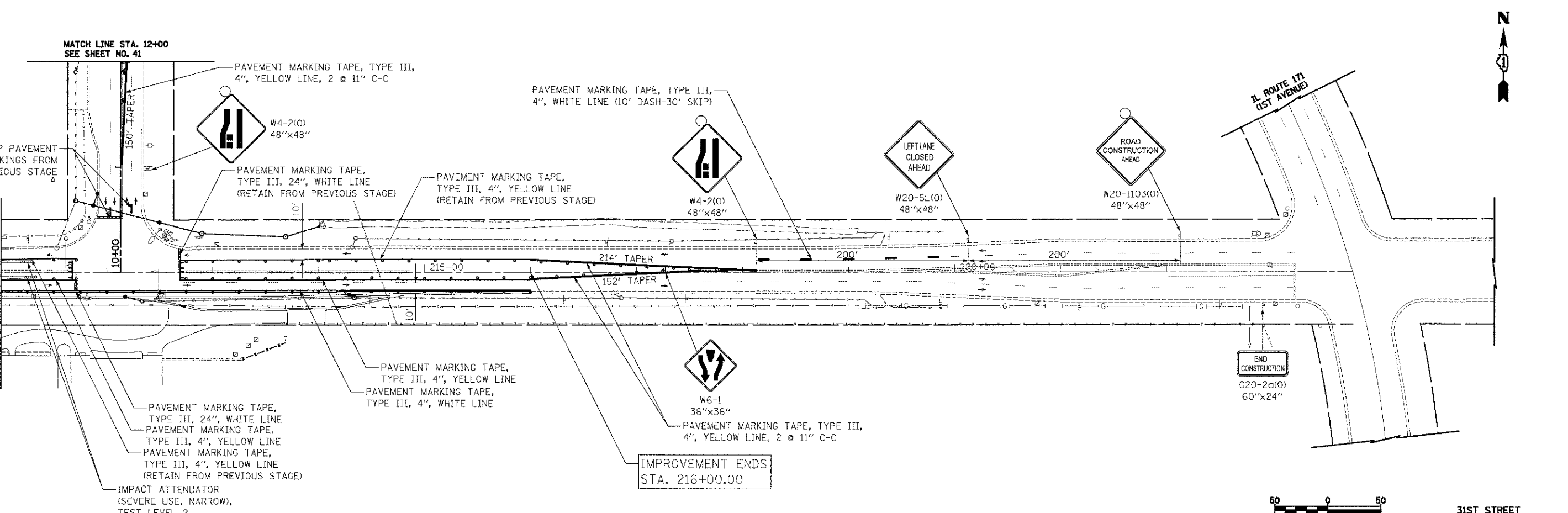
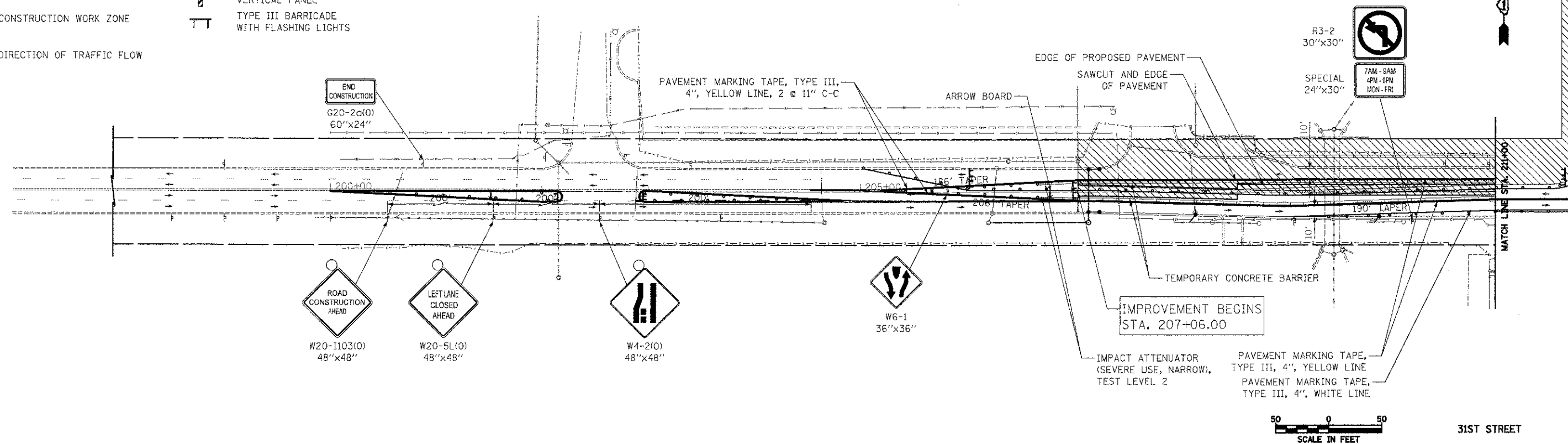


LEGEND

-  TEMPORARY PAVEMENT
-  CONSTRUCTION WORK ZONE
-  DIRECTION OF TRAFFIC FLOW
-  TYPE I OR II BARRICADE WITH FLASHING LIGHT
-  VERTICAL PANEL
-  TYPE III BARRICADE WITH FLASHING LIGHTS



FILE NAME = ...	USER NAME = dkw	DESIGNED - KWH	REVISED -
... \naheot\28-VOT\2563-VOT_03.dgn		DRAWN - KWH	REVISED -
PLOT SCALE = 50.0000 / 1 in.		CHECKED - GAB	REVISED -
PLOT DATE = 11/9/2012		DATE - 10/22/2012	REVISED -

**STATE OF ILLINOIS
DEPARTMENT OF TRANSPORTATION**

MAINTENANCE OF TRAFFIC - STAGE II

SCALE: 1" = 50' SHEET NO. 5 OF 12 SHEETS STA. 207+06.00 TO STA. 216+00.00

F.A.D. RTE. 3784	SECTION 12-F3000-23-PK	COUNTY COOK	TOTAL SHEETS 133	SHEET NO. 40
FED. ROAD DIST. NO. 1 ILLINOIS			CONTRACT NO. 63764	